

Product Datasheet

Hepatic Sinusoidal Endothelial Cells Antibody (SE-1) [FITC] NB110-68095F

Unit Size: 0.1 ml

Store at 4C in the dark.

www.novusbio.com



technical@novusbio.com

Reviews: 2 Publications: 1

Protocols, Publications, Related Products, Reviews, Research Tools and Images at:
www.novusbio.com/NB110-68095F

Updated 10/23/2024 v.20.1

Earn rewards for product
reviews and publications.

Submit a publication at www.novusbio.com/publications

Submit a review at www.novusbio.com/reviews/destination/NB110-68095F



NB110-68095F

Hepatic Sinusoidal Endothelial Cells Antibody (SE-1) [FITC]

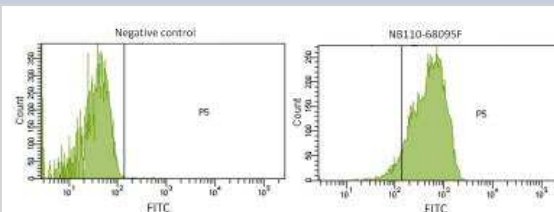
Product Information	
Unit Size	0.1 ml
Concentration	Please see the vial label for concentration. If unlisted please contact technical services.
Storage	Store at 4C in the dark.
Clonality	Monoclonal
Clone	SE-1
Preservative	0.05% Sodium Azide
Isotype	IgG2a Kappa
Conjugate	FITC
Purity	Protein A purified
Buffer	PBS

Product Description	
Host	Mouse
Species	Human, Mouse, Rat
Immunogen	Rat Hepatic Sinusoidal Endothelial Cells

Product Application Details	
Applications	Western Blot, Flow Cytometry, Immunocytochemistry/ Immunofluorescence, Immunohistochemistry, Immunohistochemistry-Frozen, Immunohistochemistry-Paraffin
Recommended Dilutions	Western Blot, Flow Cytometry, Immunohistochemistry, Immunocytochemistry/ Immunofluorescence, Immunohistochemistry-Paraffin, Immunohistochemistry-Frozen
Application Notes	Optimal dilution of this antibody should be experimentally determined.

Images

Flow Cytometry: Hepatic Sinusoidal Endothelial Cells Antibody (SE-1) [FITC] [NB110-68095F] - Flow Cytometry: Surface staining of Rat Liver sinusoidal endothelial cells with Mouse anti-Rat Hepatic Sinusoidal Endothelial Cells [FITC] [NB110-68095F] and negative control. Total viable cells were used for analysis. Image courtesy of customer.

**Publications**

de Vries RJ, Pendexter CA, Cronin SEJ et al. Cell release during perfusion reflects cold ischemic injury in rat livers Sci Rep. [PMID: 31980677] (FLOW, Rat)



Novus Biologicals USA

10730 E. Briarwood Avenue
Centennial, CO 80112
USA
Phone: 303.730.1950
Toll Free: 1.888.506.6887
Fax: 303.730.1966
nb-customerservice@bio-techne.com

Bio-Techne Canada

21 Canmotor Ave
Toronto, ON M8Z 4E6
Canada
Phone: 905.827.6400
Toll Free: 855.668.8722
Fax: 905.827.6402
canada.inquires@bio-techne.com

Bio-Techne Ltd

19 Barton Lane
Abingdon Science Park
Abingdon, OX14 3NB, United Kingdom
Phone: (44) (0) 1235 529449
Free Phone: 0800 37 34 15
Fax: (44) (0) 1235 533420
info.EMEA@bio-techne.com

General Contact Information

www.novusbio.com
Technical Support: nb-technical@bio-techne.com
Orders: nb-customerservice@bio-techne.com
General: novus@novusbio.com

Products Related to NB110-68095F

NBP1-96981F	Mouse IgG2a Kappa Isotype Control (M2AK) [FITC]
NB110-68095G	Hepatic Sinusoidal Endothelial Cells Antibody (SE-1) [DyLight 488]

Limitations

This product is for research use only and is not approved for use in humans or in clinical diagnosis. Primary Antibodies are guaranteed for 1 year from date of receipt.

For more information on our 100% guarantee, please visit www.novusbio.com/guarantee

Earn gift cards/discounts by submitting a review: www.novusbio.com/reviews/submit/NB110-68095F

Earn gift cards/discounts by submitting a publication using this product:
www.novusbio.com/publications

