

# Product Datasheet

## Beclin 2 Antibody - BSA Free

### NB110-60984

Unit Size: 0.1 ml

Store at 4C short term. Aliquot and store at -20C long term. Avoid freeze-thaw cycles.

[www.novusbio.com](http://www.novusbio.com)



[technical@novusbio.com](mailto:technical@novusbio.com)

#### Publications: 4

Protocols, Publications, Related Products, Reviews, Research Tools and Images at:  
[www.novusbio.com/NB110-60984](http://www.novusbio.com/NB110-60984)

Updated 4/13/2025 v.20.1

Earn rewards for product  
reviews and publications.

Submit a publication at [www.novusbio.com/publications](http://www.novusbio.com/publications)

Submit a review at [www.novusbio.com/reviews/destination/NB110-60984](http://www.novusbio.com/reviews/destination/NB110-60984)



**NB110-60984**

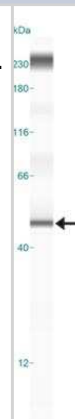
Beclin 2 Antibody - BSA Free

Product Information	
Unit Size	0.1 ml
Concentration	1.13 mg/ml
Storage	Store at 4C short term. Aliquot and store at -20C long term. Avoid freeze-thaw cycles.
Clonality	Polyclonal
Preservative	0.1% Sodium Azide
Isotype	IgG
Purity	Immunogen affinity purified
Buffer	PBS and 30% Glycerol
Target Molecular Weight	50 kDa
Product Description	
Host	Rabbit
Gene ID	441925
Gene Symbol	BECN2
Species	Human, Mouse
Reactivity Notes	Use in Mouse reported in scientific literature (PMID:33608268).
Immunogen	A synthetic peptide made to an internal region (within residues 200-300) of the human Beclin 2 protein. [UniProt# A8MW95]
Product Application Details	
Applications	Western Blot, Simple Western, Immunohistochemistry, Immunohistochemistry-Paraffin
Recommended Dilutions	Western Blot 1:200-1:500, Simple Western 1:100, Immunohistochemistry, Immunohistochemistry-Paraffin reported in scientific literature (PMID 26506105)
Application Notes	<p>A band is seen at approx. 50 kDa in Western Blot.</p> <p>In Simple Western only 10 - 15 uL of the recommended dilution is used per data point.</p> <p>See <a href="#">Simple Western Antibody Database</a> for Simple Western validation: Tested in HeLa lysate 0.5 mg/mL, separated by Size, antibody dilution of 1:100, apparent MW was 49 kDa. Separated by Size-Wes, Sally Sue/Peggy Sue.</p> <p>The observed molecular weight of the protein may vary from the listed predicted molecular weight due to post translational modifications, post translation cleavages, relative charges, and other experimental factors.</p>



## Images

Simple Western: Beclin 2 Antibody [NB110-60984] - Simple Western lane view shows a specific band for Beclin 2 in 0.5 mg/ml of HeLa lysate. This experiment was performed under reducing conditions using the 12-230 kDa separation system.



## Publications

Kim YJ, Kong Q, Yamamoto S et al. An autophagy-related protein Becn2 regulates cocaine reward behaviors in the dopaminergic system *Science advances* 2021-02-01 [PMID: 33608268] (Mouse)

### Details:

Co-immunoprecipitation performed to analyze Becn2-GASP1 interactions in mouse Neuro2A cells.

Song X, Zhu S, Chen P et al. AMPK-Mediated BECN1 Phosphorylation Promotes Ferroptosis by Directly Blocking System Xc-Activity. *Curr. Biol.* 2018-07-21 [PMID: 30057310] (WB, Human)

Liu JL, Chen FF, Chang SF et al. Expression of Beclin Family Proteins Is Associated with Tumor Progression in Oral Cancer. *PLoS ONE*. 2015-10-28 [PMID: 26506105] (WB, IHC-P, Human)

### Details:

Beclin 2 antibody was used for IHC-P analysis of tissues microarrays from oral cancer patients. The IHC was performed using Leica Bond-Max autostainer and the assay implicated 20 minutes 100C heat-induced antigen retrieval with Bond Epitope Retrieval Solution 1, endogenous peroxidase blocking with H<sub>2</sub>O<sub>2</sub> for 5 minutes, use of primary at 1: 400 dilution with 30 minutes incubation, and detection using post-primary IgG linker and polymeric horseradish peroxidase IgG followed by DAB staining (Figure 1E-I). The antibody was also used for WB on SAS cells that were transfected with control plasmid or plasmids expressing flag-tagged Beclin 1 or Beclin 2 (Figure 4A).

He R, Peng J, Yuan P et al. Divergent roles of BECN1 in LC3 lipidation and autophagosomal function. *Autophagy*. 2015-05-04 [PMID: 25955014] (WB, Human)



### **Novus Biologicals USA**

10730 E. Briarwood Avenue  
Centennial, CO 80112  
USA  
Phone: 303.730.1950  
Toll Free: 1.888.506.6887  
Fax: 303.730.1966  
nb-customerservice@bio-techne.com

### **Bio-Techne Canada**

21 Canmotor Ave  
Toronto, ON M8Z 4E6  
Canada  
Phone: 905.827.6400  
Toll Free: 855.668.8722  
Fax: 905.827.6402  
canada.inquires@bio-techne.com

### **Bio-Techne Ltd**

19 Barton Lane  
Abingdon Science Park  
Abingdon, OX14 3NB, United Kingdom  
Phone: (44) (0) 1235 529449  
Free Phone: 0800 37 34 15  
Fax: (44) (0) 1235 533420  
info.EMEA@bio-techne.com

### **General Contact Information**

www.novusbio.com  
Technical Support: nb-technical@bio-techne.com  
Orders: nb-customerservice@bio-techne.com  
General: novus@novusbio.com

### **Products Related to NB110-60984**

NB800-PC6	293 Whole Cell Lysate
NB110-60984PEP	Beclin 2 Antibody Blocking Peptide
HAF008	Goat anti-Rabbit IgG Secondary Antibody [HRP]
NB7160	Goat anti-Rabbit IgG (H+L) Secondary Antibody [HRP]
NBP2-24891	Rabbit IgG Isotype Control

### **Limitations**

This product is for research use only and is not approved for use in humans or in clinical diagnosis. Primary Antibodies are guaranteed for 1 year from date of receipt.

For more information on our 100% guarantee, please visit [www.novusbio.com/guarantee](http://www.novusbio.com/guarantee)

Earn gift cards/discounts by submitting a review: [www.novusbio.com/reviews/submit/NB110-60984](http://www.novusbio.com/reviews/submit/NB110-60984)

Earn gift cards/discounts by submitting a publication using this product:  
[www.novusbio.com/publications](http://www.novusbio.com/publications)

