

Product Datasheet

GLT1b Antibody (10B7)

NB110-58775

Unit Size: 0.1 ml

Aliquot and store at -20C or -80C. Avoid freeze-thaw cycles.

www.novusbio.com



technical@novusbio.com

Publications: 1

Protocols, Publications, Related Products, Reviews, Research Tools and Images at:
www.novusbio.com/NB110-58775

Updated 3/1/2016 v.20.1

Earn rewards for product
reviews and publications.

Submit a publication at www.novusbio.com/publications

Submit a review at www.novusbio.com/reviews/destination/NB110-58775



NB110-58775

GLT1b Antibody (10B7)

Product Information	
Unit Size	0.1 ml
Concentration	0.6 mg/ml
Storage	Aliquot and store at -20C or -80C. Avoid freeze-thaw cycles.
Clonality	Monoclonal
Clone	10B7
Preservative	No Preservative
Isotype	IgG2a
Purity	Protein G purified
Buffer	PBS
Target Molecular Weight	70 kDa

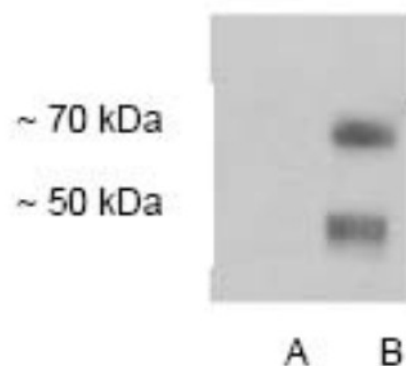
Product Description	
Host	Mouse
Gene ID	6506
Gene Symbol	SLC1A2
Species	Mouse, Rat, Human (Negative)
Reactivity Notes	Rat and mouse. Does not react with human.
Specificity/Sensitivity	This is specific for GLT1b. It does not react with GLT1a.
Immunogen	A synthetic peptide made to a C-terminal region of rat GLT1b. [Swiss Prot# Q8K5B5]

Product Application Details	
Applications	Western Blot, Immunocytochemistry/Immunofluorescence, Immunohistochemistry
Recommended Dilutions	Western Blot 1:200-1:500, Immunohistochemistry 1:200-1:500, Immunocytochemistry/Immunofluorescence 1:200-1:500
Application Notes	<p>This GLT1b antibody is useful for Immunocytochemistry/Immunofluorescence, Immunohistochemistry and Western blot. In Western blot a band is seen at ~70 kDa, representing the GLT1b protein. A band may also be observed at ~50 kDa. Both bands will disappear when the antibody is preadsorbed with the immunizing peptide, however the lower band has not been characterized.</p> <p>The observed molecular weight of the protein may vary from the listed predicted molecular weight due to post translational modifications, post translation cleavages, relative charges, and other experimental factors.</p>

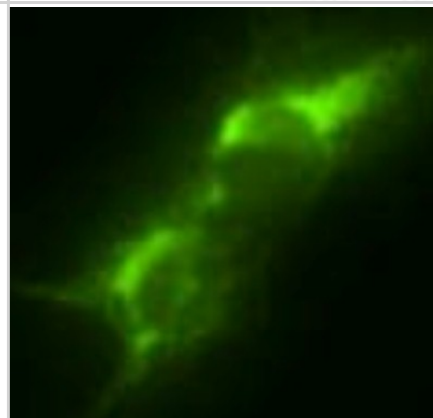


Images

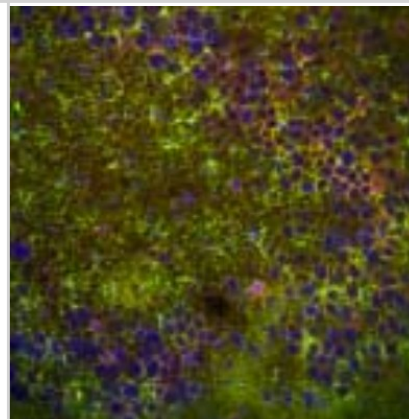
Western Blot: GLT1b Antibody (10B7) [NB110-58775] - Specifically recognizes GLT1b on a western blot. Lanes A and B represent COS7 cells transfected with GLT1a and GLT1b, respectively. The ~ 70kDa band is the expected size.



Immunocytochemistry/Immunofluorescence: GLT1b Antibody (10B7) [NB110-58775] - Immunocytochemistry on COS7 cells transfected with GLT1b using GLT1b monoclonal antibody.



Immunohistochemistry: GLT1b Antibody (10B7) [NB110-58775] - GLT1b expression in rat brain. GLT1b is shown in green and the main GLT1 protein is shown in red.



Publications

Tse Dennis Y, Chung Inyoung, Wu Samuel M. Pharmacological inhibitions of glutamate transporters EAAT1 and EAAT2 compromise glutamate transport in photoreceptor to ON-bipolar cell synapses. *Vision Res.* 2014 Oct 01 [PMID: 25152321]



Novus Biologicals USA

10730 E. Briarwood Avenue
Centennial, CO 80112
USA

Phone: 303.730.1950
Toll Free: 1.888.506.6887
Fax: 303.730.1966
novus@novusbio.com

Novus Biologicals Canada

461 North Service Road West, Unit B37
Oakville, ON L6M 2V5
Canada

Phone: 905.827.6400
Toll Free: 855.668.8722
Fax: 905.827.6402
canada@novusbio.com

Novus Biologicals Europe

19 Barton Lane
Abingdon Science Park
Abingdon, OX14 3NB, United Kingdom

Phone: (44) (0) 1235 529449
Free Phone: 0800 37 34 15
Fax: (44) (0) 1235 533420
info@bio-techne.com

General Contact Information

www.novusbio.com
Technical Support: technical@novusbio.com
Orders: orders@novusbio.com
General: novus@novusbio.com

Limitations

This product is for research use only and is not approved for use in humans or in clinical diagnosis. Primary Antibodies are guaranteed for 1 year from date of receipt.

For more information on our 100% guarantee, please visit www.novusbio.com/guarantee

Earn gift cards/discounts by submitting a review: www.novusbio.com/reviews/submit/NB110-58775

Earn gift cards/discounts by submitting a publication using this product:
www.novusbio.com/publications

