

# Product Datasheet

## Aminopeptidase N/CD13 Antibody (WM15) - BSA Free NB110-58720

Unit Size: 0.1 mg

Store at 4C. Do not freeze.

[www.novusbio.com](http://www.novusbio.com)



[technical@novusbio.com](mailto:technical@novusbio.com)

Protocols, Publications, Related Products, Reviews, Research Tools and Images at:  
[www.novusbio.com/NB110-58720](http://www.novusbio.com/NB110-58720)

Updated 10/23/2024 v.20.1

Earn rewards for product  
reviews and publications.

Submit a publication at [www.novusbio.com/publications](http://www.novusbio.com/publications)

Submit a review at [www.novusbio.com/reviews/destination/NB110-58720](http://www.novusbio.com/reviews/destination/NB110-58720)



**NB110-58720**

Aminopeptidase N/CD13 Antibody (WM15) - BSA Free

**Product Information**

<b>Unit Size</b>	0.1 mg
<b>Concentration</b>	1.0 mg/ml
<b>Storage</b>	Store at 4C. Do not freeze.
<b>Clonality</b>	Monoclonal
<b>Clone</b>	WM15
<b>Preservative</b>	0.9% Sodium Azide
<b>Isotype</b>	IgG1
<b>Purity</b>	Protein A purified
<b>Buffer</b>	PBS (pH 7.4)
<b>Target Molecular Weight</b>	150 kDa

**Product Description**

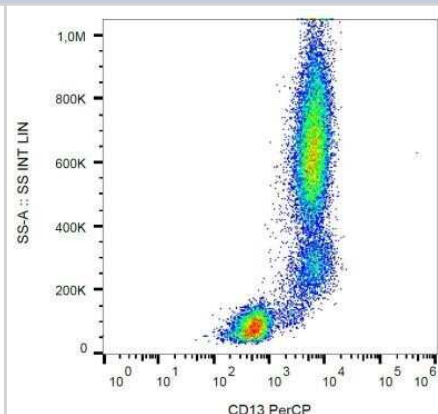
<b>Host</b>	Mouse
<b>Gene ID</b>	290
<b>Gene Symbol</b>	ANPEP
<b>Species</b>	Human, Primate
<b>Specificity/Sensitivity</b>	The antibody WM15 recognises the human CD13 cell surface glycoprotein, a 150 kDa molecule expressed on granulocytes, endothelial cells, epithelial cells and myeloid progenitors. HLDA III; WS Code M 213 HLDA IV; WS Code M 44 HLDA IV; WS Code M 209 HLDA V; WS Code M MA191
<b>Immunogen</b>	Human AML cells (NM_001150.2).

**Product Application Details**

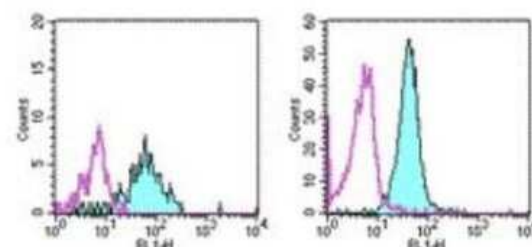
<b>Applications</b>	Flow Cytometry, Immunohistochemistry, Immunohistochemistry-Frozen, Immunoprecipitation, CyTOF-ready
<b>Recommended Dilutions</b>	Flow Cytometry 1-4 ug/ml, Immunohistochemistry 1:10-1:500, Immunoprecipitation 1:50, Immunohistochemistry-Frozen 1:200, CyTOF-ready
<b>Application Notes</b>	Functional: The antibody WM15 inhibits infection of cells by human coronavirus and inhibits aminopeptidase N activity of the CD13 molecule immunoprecipitates. Purity is > 95% (by SDS-PAGE). This antibody is CyTOF ready.

**Images**

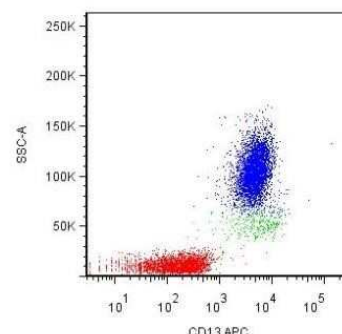
Flow Cytometry: Aminopeptidase N/CD13 Antibody (WM15) [NB110-58720] - Surface staining of human peripheral blood leukocytes with anti-CD13 (WM15) PerCP.



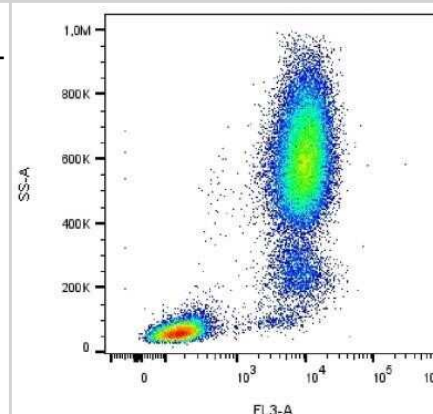
Flow Cytometry: Aminopeptidase N/CD13 Antibody (WM15) [NB110-58720] - Staining of normal human peripheral blood cells with 0.5 ug of Mouse IgG1 Isotype Control Purified (open histogram) or 0.5 ug of Anti-Human CD13 Purified (filled histogram) followed by Anti-Mouse IgG FITC. Cells in the monocyte (left) and granulocyte (right) gates were used for analysis.



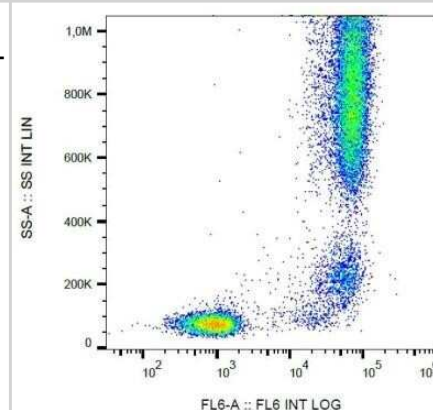
Flow Cytometry: Aminopeptidase N/CD13 Antibody (WM15) [NB110-58720] - Surface staining of human peripheral blood leukocytes with anti-CD13.



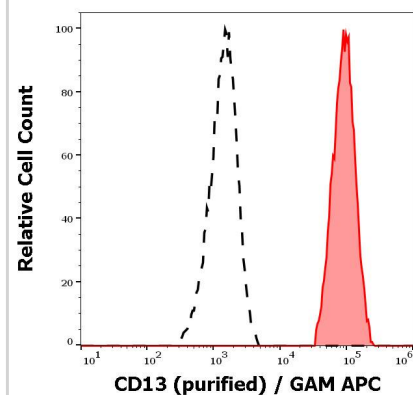
Flow Cytometry: Aminopeptidase N/CD13 Antibody (WM15) [NB110-58720] - Surface staining of human peripheral blood leukocytes with anti-CD13 (WM15) PE-DyLight 594.



Flow Cytometry: Aminopeptidase N/CD13 Antibody (WM15) [NB110-58720] - Surface staining of human peripheral blood leukocytes with anti-CD13 (WM15) biotin, streptavidin-APC.



Surface staining pattern of human peripheral whole blood stained using anti-human CD13 (WM15) purified antibody (concentration in sample 1 ug/ml, GAM APC).





### **Novus Biologicals USA**

10730 E. Briarwood Avenue  
Centennial, CO 80112  
USA  
Phone: 303.730.1950  
Toll Free: 1.888.506.6887  
Fax: 303.730.1966  
nb-customerservice@bio-techne.com

### **Bio-Techne Canada**

21 Canmotor Ave  
Toronto, ON M8Z 4E6  
Canada  
Phone: 905.827.6400  
Toll Free: 855.668.8722  
Fax: 905.827.6402  
canada.inquires@bio-techne.com

### **Bio-Techne Ltd**

19 Barton Lane  
Abingdon Science Park  
Abingdon, OX14 3NB, United Kingdom  
Phone: (44) (0) 1235 529449  
Free Phone: 0800 37 34 15  
Fax: (44) (0) 1235 533420  
info.EMEA@bio-techne.com

### **General Contact Information**

[www.novusbio.com](http://www.novusbio.com)  
Technical Support: nb-technical@bio-techne.com  
Orders: nb-customerservice@bio-techne.com  
General: novus@novusbio.com

### **Products Related to NB110-58720**

HAF007	Goat anti-Mouse IgG Secondary Antibody [HRP]
NB720-B	Rabbit anti-Mouse IgG (H+L) Secondary Antibody [Biotin]
NBP1-97005-0.5mg	Mouse IgG1 Isotype Control (MG1)
NB110-58720APC	Aminopeptidase N/CD13 Antibody (WM15) [Allophycocyanin]

### **Limitations**

This product is for research use only and is not approved for use in humans or in clinical diagnosis. Primary Antibodies are guaranteed for 1 year from date of receipt.

For more information on our 100% guarantee, please visit [www.novusbio.com/guarantee](http://www.novusbio.com/guarantee)

Earn gift cards/discounts by submitting a review: [www.novusbio.com/reviews/submit/NB110-58720](http://www.novusbio.com/reviews/submit/NB110-58720)

Earn gift cards/discounts by submitting a publication using this product:  
[www.novusbio.com/publications](http://www.novusbio.com/publications)

