

# Product Datasheet

## MLK3 Antibody (EP1460Y)

### NB110-57210

Unit Size: 0.1 ml

Store at -20C. Avoid freeze-thaw cycles.

[www.novusbio.com](http://www.novusbio.com)



[technical@novusbio.com](mailto:technical@novusbio.com)

#### Publications: 1

Protocols, Publications, Related Products, Reviews, Research Tools and Images at:  
[www.novusbio.com/NB110-57210](http://www.novusbio.com/NB110-57210)

Updated 6/27/2018 v.20.1

Earn rewards for product  
reviews and publications.

Submit a publication at [www.novusbio.com/publications](http://www.novusbio.com/publications)

Submit a review at [www.novusbio.com/reviews/destination/NB110-57210](http://www.novusbio.com/reviews/destination/NB110-57210)



**NB110-57210**

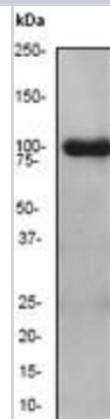
MLK3 Antibody (EP1460Y)

<b>Product Information</b>	
<b>Unit Size</b>	0.1 ml
<b>Concentration</b>	This product is unpurified. The exact concentration of antibody is not quantifiable.
<b>Storage</b>	Store at -20C. Avoid freeze-thaw cycles.
<b>Clonality</b>	Monoclonal
<b>Clone</b>	EP1460Y
<b>Preservative</b>	0.01% Sodium Azide
<b>Isotype</b>	IgG
<b>Purity</b>	Tissue culture supernatant
<b>Buffer</b>	49% PBS, 0.05% BSA and 50% Glycerol
<b>Target Molecular Weight</b>	93 kDa
<b>Product Description</b>	
<b>Host</b>	Rabbit
<b>Gene ID</b>	4296
<b>Gene Symbol</b>	MAP3K11
<b>Species</b>	Human, Mouse, Rat (Negative)
<b>Reactivity Notes</b>	Reacts with: Mouse, Human Does not react with Rat
<b>Immunogen</b>	A synthetic peptide corresponding to residues on the C-terminus of human MLK-3 was used as an immunogen
<b>Notes</b>	Produced using Abcam's RabMab® technology. RabMab® technology is covered by the following U.S. Patents, No. 5,675,063 and/or 7,429,487.
<b>Product Application Details</b>	
<b>Applications</b>	Western Blot, Flow Cytometry, Immunocytochemistry/Immunofluorescence
<b>Recommended Dilutions</b>	Western Blot 1:1000-10000, Flow Cytometry 1:15, Immunocytochemistry/Immunofluorescence 1:100-250

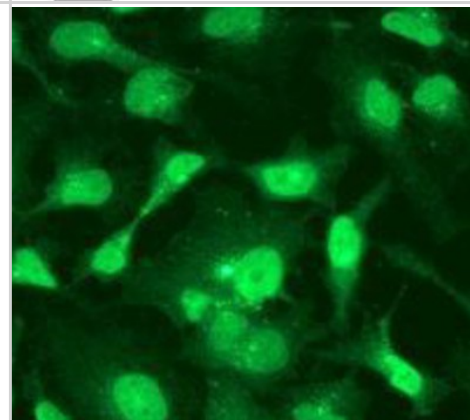


## Images

Western Blot: MLK3 Antibody (EP1460Y) [NB110-57210] A431 cell lysate.



Immunocytochemistry/Immunofluorescence: MLK3 Antibody (EP1460Y) [NB110-57210] - Immunofluorescent staining of HeLa cells



## Publications

Mishra P, Senthivinayagam S, Rangasamy V et al. Mixed lineage kinase-3/JNK1 axis promotes migration of human gastric cancer cells following gastrin stimulation. *Mol Endocrinol.* 2010 Mar. [PMID: 20150185]



### **Novus Biologicals USA**

10730 E. Briarwood Avenue  
Centennial, CO 80112  
USA

Phone: 303.730.1950  
Toll Free: 1.888.506.6887  
Fax: 303.730.1966  
novus@novusbio.com

### **Novus Biologicals Canada**

461 North Service Road West, Unit B37  
Oakville, ON L6M 2V5  
Canada

Phone: 905.827.6400  
Toll Free: 855.668.8722  
Fax: 905.827.6402  
canada@novusbio.com

### **Novus Biologicals Europe**

19 Barton Lane  
Abingdon Science Park  
Abingdon, OX14 3NB, United Kingdom

Phone: (44) (0) 1235 529449  
Free Phone: 0800 37 34 15  
Fax: (44) (0) 1235 533420  
info@bio-techne.com

### **General Contact Information**

www.novusbio.com  
Technical Support: technical@novusbio.com  
Orders: orders@novusbio.com  
General: novus@novusbio.com

### **Limitations**

This product is for research use only and is not approved for use in humans or in clinical diagnosis. Primary Antibodies are guaranteed for 1 year from date of receipt.

For more information on our 100% guarantee, please visit [www.novusbio.com/guarantee](http://www.novusbio.com/guarantee)

Earn gift cards/discounts by submitting a review: [www.novusbio.com/reviews/submit/NB110-57210](http://www.novusbio.com/reviews/submit/NB110-57210)

Earn gift cards/discounts by submitting a publication using this product:  
[www.novusbio.com/publications](http://www.novusbio.com/publications)

