

Product Datasheet

LEDGF Antibody - BSA Free

NB110-40560

Unit Size: 100 ul

Store at 4C. Do not freeze.

www.novusbio.com



technical@novusbio.com

Publications: 5

Protocols, Publications, Related Products, Reviews, Research Tools and Images at:
www.novusbio.com/NB110-40560

Updated 2/21/2025 v.20.1

Earn rewards for product
reviews and publications.

Submit a publication at www.novusbio.com/publications

Submit a review at www.novusbio.com/reviews/destination/NB110-40560



NB110-40560

LEDGF Antibody - BSA Free

Product Information	
Unit Size	100 ul
Concentration	1.0 mg/ml
Storage	Store at 4C. Do not freeze.
Clonality	Polyclonal
Preservative	0.09% Sodium Azide
Isotype	IgG
Purity	Immunogen affinity purified
Buffer	Tris-Citrate/Phosphate (pH 7.0 - 8.0)

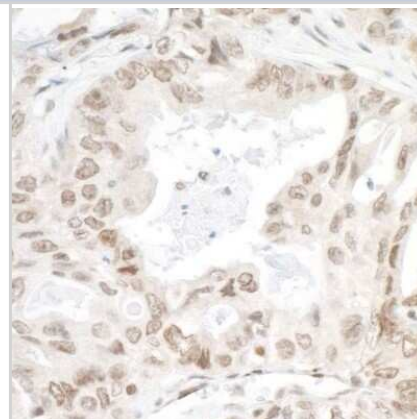
Product Description	
Host	Rabbit
Gene ID	11168
Gene Symbol	PSIP1
Species	Human, Mouse
Reactivity Notes	Cat (100%).
Immunogen	The immunogen recognized by this antibody maps to a region between residue 225 and 275 of human Lens Epithelium Derived Growth Factor/Transcriptional Coactivator p75 using the numbering given in entry NP_150091.2 (GeneID 11168).

Product Application Details	
Applications	Immunohistochemistry, Immunohistochemistry-Paraffin, Immunoprecipitation, Western Blot (Negative)
Recommended Dilutions	Immunohistochemistry 1:500- 1:2000, Immunoprecipitation 2-5 ug/mg lysate, Immunohistochemistry-Paraffin, Western Blot (Negative)
Application Notes	For western blot, use rabbit anti-LEDGF Antibody NB110-40561. Immunohistochemistry 1:500 to 1:2,000. Epitope retrieval with Tris-EDTA pH9.0 is recommended for FFPE tissue sections.

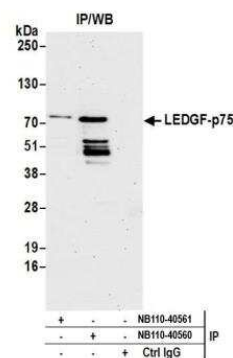


Images

Immunohistochemistry-Paraffin: LEDGF Antibody [NB110-40560] - Detection of human LEDGF/p75 by immunohistochemistry. Sample: FFPE section of human lung carcinoma. Antibody: Affinity purified rabbit anti-LEDGF/p75 antibody (NB110-40560). Secondary: HRP-conjugated goat anti-rabbit IgG.



Immunoprecipitation: LEDGF Antibody [NB110-40560] - Detection of human LEDGF by western blot of immunoprecipitates. Samples: Whole cell lysate (1.0 mg per IP reaction; 20% of IP loaded) from HeLa cells prepared using NETN lysis buffer. Antibodies: Affinity purified rabbit anti-LEDGF antibody NB110-40560 used for IP at 3 ug per reaction. LEDGF was also immunoprecipitated by rabbit anti-LEDGF antibody NB110-40561. For blotting immunoprecipitated LEDGF, NB110-40560 was used at 1 ug/ml. Detection: Chemiluminescence with an exposure time of 75 seconds.



Publications

Basu A, Rojas H, Banerjee H et al. Expression of the stress response oncoprotein LEDGF/p75 in human cancer: a study of 21 tumor types. PLoS One. 2012-01-01 [PMID: 22276150]

Details:

Tissue Microarrays cited for analysis of LEDGF/p75 protein expression (Tables 1, 3, 4; Figs 3, 4): IMH-303: Prostate cancer IMH-326: Common cancers (A) IMH-327: Common cancers (B) IMH-328: Common cancers (C) IMH-336: Matched normal adjacent of IMH-326 IMH-337: Matched normal adjacent of IMH-327 IMH-338: Matched normal adjacent of IMH-328

Hendrix J, Gijsbers R, De Rijck J et al. The transcriptional co-activator LEDGF/p75 displays a dynamic scan-and-lock mechanism for chromatin tethering. Nucleic Acids Res 2011-03-01 [PMID: 20974633]

Bartholomeeusen K, Christ F, Hendrix J et al. Lens epithelium-derived growth factor/p75 interacts with the transposase-derived DDE domain of PogZ. J Biol Chem 2009-04-01 [PMID: 19244240]

Shun MC, Botbol Y, Li X et al. Identification and characterization of PWWP domain residues critical for LEDGF/p75 chromatin binding and human immunodeficiency virus type 1 infectivity. J Virol 2008-12-01 [PMID: 18799576]

Shun MC, Raghavendra NK, Vandegraaff N et al. LEDGF/p75 functions downstream from preintegration complex formation to effect gene-specific HIV-1 integration. Genes Dev. 2007-07-15 [PMID: 17639082]



Novus Biologicals USA

10730 E. Briarwood Avenue
Centennial, CO 80112
USA
Phone: 303.730.1950
Toll Free: 1.888.506.6887
Fax: 303.730.1966
nb-customerservice@bio-techne.com

Bio-Techne Canada

21 Canmotor Ave
Toronto, ON M8Z 4E6
Canada
Phone: 905.827.6400
Toll Free: 855.668.8722
Fax: 905.827.6402
canada.inquires@bio-techne.com

Bio-Techne Ltd

19 Barton Lane
Abingdon Science Park
Abingdon, OX14 3NB, United Kingdom
Phone: (44) (0) 1235 529449
Free Phone: 0800 37 34 15
Fax: (44) (0) 1235 533420
info.EMEA@bio-techne.com

General Contact Information

www.novusbio.com
Technical Support: nb-technical@bio-
techne.com
Orders: nb-customerservice@bio-techne.com
General: novus@novusbio.com

Products Related to NB110-40560

HAF008	Goat anti-Rabbit IgG Secondary Antibody [HRP]
NB7160	Goat anti-Rabbit IgG (H+L) Secondary Antibody [HRP]
NBP2-24891	Rabbit IgG Isotype Control
NBP1-87885PEP	LEDGF Recombinant Protein Antigen

Limitations

This product is for research use only and is not approved for use in humans or in clinical diagnosis. Primary Antibodies are guaranteed for 1 year from date of receipt.

For more information on our 100% guarantee, please visit www.novusbio.com/guarantee

Earn gift cards/discounts by submitting a review: www.novusbio.com/reviews/submit/NB110-40560

Earn gift cards/discounts by submitting a publication using this product:
www.novusbio.com/publications

