

# Product Datasheet

## PP2C gamma/PPM1G Antibody NB110-38867

Unit Size: 0.1 ml

Store at 4C. Do not freeze.

[www.novusbio.com](http://www.novusbio.com)



[technical@novusbio.com](mailto:technical@novusbio.com)

### Publications: 2

Protocols, Publications, Related Products, Reviews, Research Tools and Images at:  
[www.novusbio.com/NB110-38867](http://www.novusbio.com/NB110-38867)

Updated 10/23/2024 v.20.1

Earn rewards for product  
reviews and publications.

Submit a publication at [www.novusbio.com/publications](http://www.novusbio.com/publications)

Submit a review at [www.novusbio.com/reviews/destination/NB110-38867](http://www.novusbio.com/reviews/destination/NB110-38867)



**NB110-38867****PP2C gamma/PPM1G Antibody**

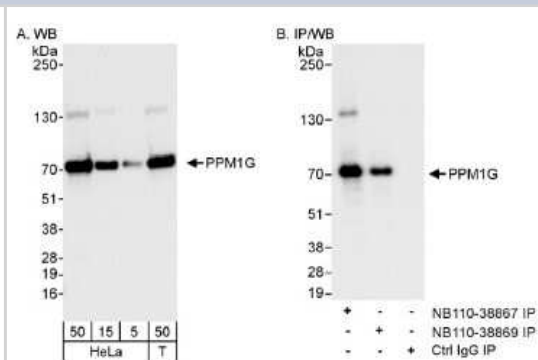
Product Information	
Unit Size	0.1 ml
Concentration	0.2 mg/ml
Storage	Store at 4C. Do not freeze.
Clonality	Polyclonal
Preservative	0.09% Sodium Azide
Isotype	IgG
Purity	Immunogen affinity purified
Buffer	TBS and 0.1% BSA

Product Description	
Host	Rabbit
Gene ID	5496
Gene Symbol	PPM1G
Species	Human, Mouse
Immunogen	The immunogen recognized by this antibody maps to a region between residue 400 and 450 of human Protein Phosphatase Magnesium-dependent 1 Gamma using the numbering given in entry NP_817092.1 (GenelD 5496).

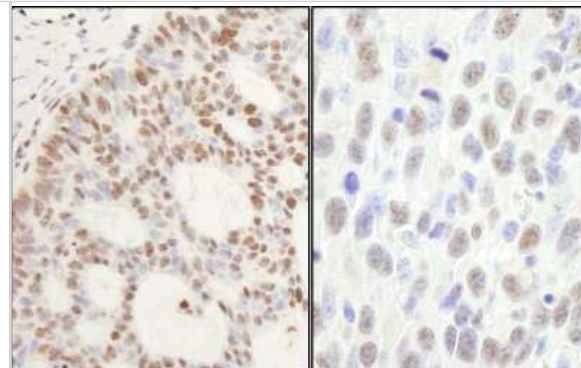
Product Application Details	
Applications	Western Blot, Immunohistochemistry, Immunohistochemistry-Paraffin, Immunoprecipitation
Recommended Dilutions	Western Blot 1:2000-1:10000, Immunohistochemistry 1:200-1:1000, Immunoprecipitation 2-5 ug/mg lysate, Immunohistochemistry-Paraffin 1:100-1:500
Application Notes	This antibody can be used for immunoprecipitation and Western blot analysis. Prepare working dilution immediately before use.

**Images**

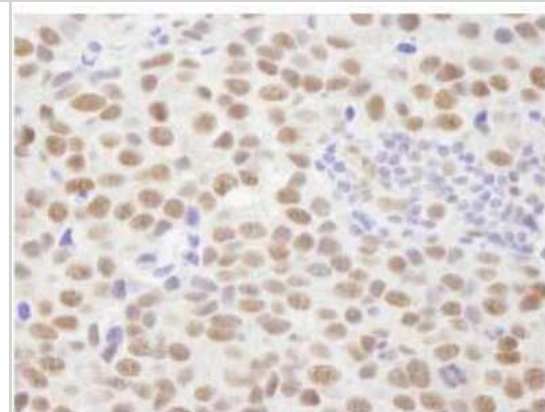
Western Blot: PP2C gamma/PPM1G Antibody [NB110-38867] - Detection of Human PPM1G on HeLa whole cell lysate (5, 15, and 50 microgram) and 293T (50 microgram) using NB110-38867. PPM1G was also immunoprecipitated by rabbit anti-PPM1G antibody NB110-38869.



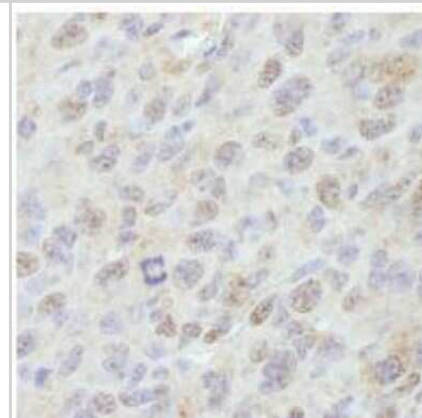
Immunohistochemistry: PP2C gamma/PPM1G Antibody [NB110-38867]  
 - Sample: FFPE sections of human skin basal cell carcinoma (left) and mouse squamous cell carcinoma (right). Antibody: Affinity purified rabbit anti- PPM1G used at a dilution of 1:1,000 (0.2ug/ml) and 1:200 (1ug/ml).  
 Detection: DAB



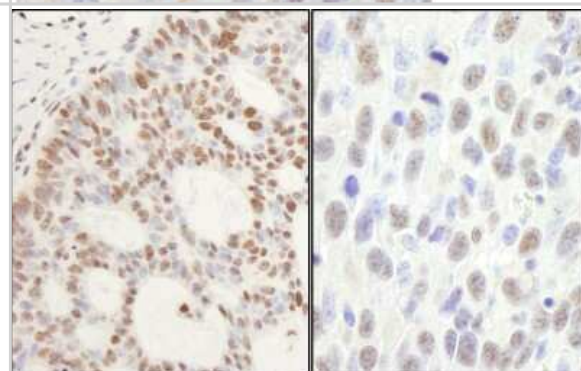
Immunohistochemistry-Paraffin: PP2C gamma/PPM1G Antibody [NB110-38867] - FFPE section of human breast adenocarcinoma. Affinity purified rabbit anti-PPM1G used at a dilution of 1:500.



Immunohistochemistry-Paraffin: PP2C gamma/PPM1G Antibody [NB110-38867] - FFPE section of mouse squamous cell carcinoma. Affinity purified rabbit anti-PPM1G used at a dilution of 1:100.



Immunohistochemistry: PP2C gamma/PPM1G Antibody [NB110-38867]  
 - Sample: FFPE sections of human skin basal cell carcinoma (left) and mouse squamous cell carcinoma (right). Antibody: Affinity purified rabbit anti- PPM1G used at a dilution of 1:1,000 (0.2ug/ml) and 1:200 (1ug/ml).  
 Detection: DAB



## Publications

Hutten S, Prescott A, James J et al. An intranucleolar body associated with rDNA. Chromosoma 2011-10-01 [PMID: 21698343]

Ryan K, Khleborodova A, Pan J et al. Small molecule activators of pre-mRNA 3' cleavage. RNA 2009-03-01 [PMID: 19155323]



### **Novus Biologicals USA**

10730 E. Briarwood Avenue  
Centennial, CO 80112  
USA

Phone: 303.730.1950

Toll Free: 1.888.506.6887

Fax: 303.730.1966

[nb-customerservice@bio-techne.com](mailto:nb-customerservice@bio-techne.com)

### **Bio-Techne Canada**

21 Canmotor Ave  
Toronto, ON M8Z 4E6  
Canada

Phone: 905.827.6400

Toll Free: 855.668.8722

Fax: 905.827.6402

[canada.inquires@bio-techne.com](mailto:canada.inquires@bio-techne.com)

### **Bio-Techne Ltd**

19 Barton Lane  
Abingdon Science Park  
Abingdon, OX14 3NB, United Kingdom

Phone: (44) (0) 1235 529449

Free Phone: 0800 37 34 15

Fax: (44) (0) 1235 533420

[info.EMEA@bio-techne.com](mailto:info.EMEA@bio-techne.com)

### **General Contact Information**

[www.novusbio.com](http://www.novusbio.com)

Technical Support: [nb-technical@bio-techne.com](mailto:nb-technical@bio-techne.com)

Orders: [nb-customerservice@bio-techne.com](mailto:nb-customerservice@bio-techne.com)

General: [novus@novusbio.com](mailto:novus@novusbio.com)

### **Products Related to NB110-38867**

NB800-PC1	HeLa Whole Cell Lysate
HAF008	Goat anti-Rabbit IgG Secondary Antibody [HRP]
NB7160	Goat anti-Rabbit IgG (H+L) Secondary Antibody [HRP]
NBP2-24891	Rabbit IgG Isotype Control

### **Limitations**

This product is for research use only and is not approved for use in humans or in clinical diagnosis. Primary Antibodies are guaranteed for 1 year from date of receipt.

For more information on our 100% guarantee, please visit [www.novusbio.com/guarantee](http://www.novusbio.com/guarantee)

Earn gift cards/discounts by submitting a review: [www.novusbio.com/reviews/submit/NB110-38867](http://www.novusbio.com/reviews/submit/NB110-38867)

Earn gift cards/discounts by submitting a publication using this product:

[www.novusbio.com/publications](http://www.novusbio.com/publications)

