

# Product Datasheet

## Hormone-sensitive Lipase/HSL Antibody NB110-37253SS

Unit Size: 0.025 ml

Aliquot and store at -20C or -80C. Avoid freeze-thaw cycles.

[www.novusbio.com](http://www.novusbio.com)



[technical@novusbio.com](mailto:technical@novusbio.com)

### Publications: 5

Protocols, Publications, Related Products, Reviews, Research Tools and Images at:  
[www.novusbio.com/NB110-37253](http://www.novusbio.com/NB110-37253)

Updated 9/9/2025 v.20.1

Earn rewards for product  
reviews and publications.

Submit a publication at [www.novusbio.com/publications](http://www.novusbio.com/publications)

Submit a review at [www.novusbio.com/reviews/destination/NB110-37253](http://www.novusbio.com/reviews/destination/NB110-37253)



**NB110-37253SS****Hormone-sensitive Lipase/HSL Antibody**

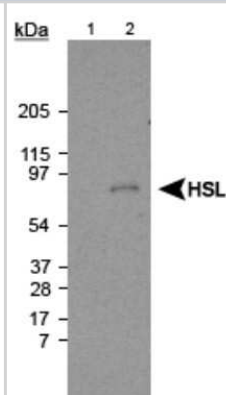
Product Information	
<b>Unit Size</b>	0.025 ml
<b>Concentration</b>	Please see the vial label for concentration. If unlisted please contact technical services.
<b>Storage</b>	Aliquot and store at -20C or -80C. Avoid freeze-thaw cycles.
<b>Clonality</b>	Polyclonal
<b>Preservative</b>	0.05% Sodium Azide
<b>Isotype</b>	IgG
<b>Purity</b>	IgG purified
<b>Buffer</b>	PBS containing 1 mg/ml BSA

Product Description	
<b>Description</b>	Novus Biologicals Rabbit Hormone-sensitive Lipase/HSL Antibody (NB110-37253) is a polyclonal antibody validated for use in WB. Anti-Hormone-sensitive Lipase/HSL Antibody: Cited in 5 publications. All Novus Biologicals antibodies are covered by our 100% guarantee.
<b>Host</b>	Rabbit
<b>Gene ID</b>	3991
<b>Gene Symbol</b>	LIPE
<b>Species</b>	Human, Mouse, Rat
<b>Immunogen</b>	A fusion protein containing an internal portion of the rat HSL protein (between residues 699-908). [Swiss-Prot P15304]

Product Application Details	
<b>Applications</b>	Western Blot
<b>Recommended Dilutions</b>	Western Blot 1:100-1:2000
<b>Application Notes</b>	This HSL antibody is useful for Western Blot, where a band at ~84kDa is seen representing HSL protein. A non-specific band may be seen at ~89 kDa. Bands at ~102, 113, and 127 kDa may also be seen in the testis of sexually immature rats.

**Images**

Western Blot: HSL Antibody [NB110-37253] - Detection of HSL using NB110-37253. Lane 1: Liver extract (negative control) Lane 2: Fat extract (10ug) (positive sample).



## Publications

Chen L, You Q, Liu M et al. Remodeling of dermal adipose tissue alleviates cutaneous toxicity induced by anti-EGFR therapy eLife 2022-03-24 [PMID: 35324426]

Zhao F, Ke J, Pan W et al. Synergistic effects of ISL1 and KDM6B on non-alcoholic fatty liver disease through the regulation of SNAI1 Molecular medicine (Cambridge, Mass.) 2022-01-31 [PMID: 35100965] (WB, Mouse)

Smagris E, BasuRay S, Li J et al. Pnpla3<sup>1148M</sup> knockin mice accumulate PNPLA3 on lipid droplets and develop hepatic steatosis. Hepatology. 2014-06-10 [PMID: 24917523] (WB, Mouse)

### Details:

Rabbit anti-mouse HSL (1:1000; Novus Biologicals, Littleton, CO) used in Western blot analysis of hepatic lipid droplet proteins of Pnpla3<sup>148M/M</sup> and Pnpla3<sup>47A/A</sup> KI mice(Fugure 6A)

Hagopian K, Tomilov AA, Tomilova N et al. Shc proteins influence the activities of enzymes involved in fatty acid oxidation and ketogenesis Metabolism 2012-06-07 [PMID: 22683097] (WB, Mouse)

Kraemer, FB et al. Detection of hormone-sensitive lipase in various tissues. J Lipid Res. 34(4):663-71. 1993-04-01 [PMID: 8496671] (WB, Rat)





### **Novus Biologicals USA**

10730 E. Briarwood Avenue  
Centennial, CO 80112  
USA  
Phone: 303.730.1950  
Toll Free: 1.888.506.6887  
Fax: 303.730.1966  
nb-customerservice@bio-techne.com

### **Bio-Techne Canada**

21 Canmotor Ave  
Toronto, ON M8Z 4E6  
Canada  
Phone: 905.827.6400  
Toll Free: 855.668.8722  
Fax: 905.827.6402  
canada.inquires@bio-techne.com

### **Bio-Techne Ltd**

19 Barton Lane  
Abingdon Science Park  
Abingdon, OX14 3NB, United Kingdom  
Phone: (44) (0) 1235 529449  
Free Phone: 0800 37 34 15  
Fax: (44) (0) 1235 533420  
info.EMEA@bio-techne.com

### **General Contact Information**

www.novusbio.com  
Technical Support: nb-technical@bio-techne.com  
Orders: nb-customerservice@bio-techne.com  
General: novus@novusbio.com

### **Limitations**

This product is for research use only and is not approved for use in humans or in clinical diagnosis. Primary Antibodies are guaranteed for 1 year from date of receipt.

For more information on our 100% guarantee, please visit [www.novusbio.com/guarantee](http://www.novusbio.com/guarantee)

Earn gift cards/discounts by submitting a review: [www.novusbio.com/reviews/submit/NB110-37253](http://www.novusbio.com/reviews/submit/NB110-37253)

Earn gift cards/discounts by submitting a publication using this product:  
[www.novusbio.com/publications](http://www.novusbio.com/publications)

