

# Product Datasheet

## Phosphoserine Antibody NB110-15157

Unit Size: 0.05 ml

Store at 4C short term. Aliquot and store at -20C long term. Avoid freeze-thaw cycles.

[www.novusbio.com](http://www.novusbio.com)



[technical@novusbio.com](mailto:technical@novusbio.com)

Protocols, Publications, Related Products, Reviews, Research Tools and Images at:  
[www.novusbio.com/NB110-15157](http://www.novusbio.com/NB110-15157)

Updated 1/25/2021 v.20.1

Earn rewards for product  
reviews and publications.

Submit a publication at [www.novusbio.com/publications](http://www.novusbio.com/publications)

Submit a review at [www.novusbio.com/reviews/destination/NB110-15157](http://www.novusbio.com/reviews/destination/NB110-15157)



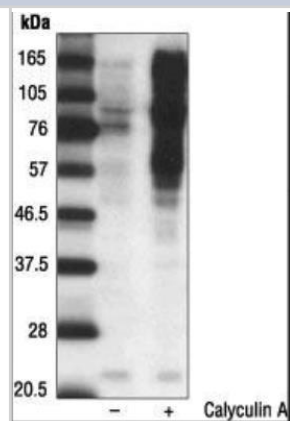
**NB110-15157****Phosphoserine Antibody**

<b>Product Information</b>	
<b>Unit Size</b>	0.05 ml
<b>Concentration</b>	0.17 mg/ml
<b>Storage</b>	Store at 4C short term. Aliquot and store at -20C long term. Avoid freeze-thaw cycles.
<b>Clonality</b>	Polyclonal
<b>Preservative</b>	No Preservative
<b>Isotype</b>	IgG
<b>Purity</b>	Protein A purified
<b>Buffer</b>	10mM Sodium HEPES (pH 7.5), 0.15M NaCl, 0.1 mg/ml BSA and 50% Glycerol
<b>Product Description</b>	
<b>Host</b>	Rabbit
<b>Species</b>	All Species
<b>Specificity/Sensitivity</b>	Recognizes phospho-serine or threonine in the context of tyrosine, tryptophan or phenylalanine at the -1 position or phenylalanine at the +1 position (Y/F/W) (S*/T*)F. Does not recognize the nonphosphorylated form of these motifs, nor does it recognize other phosphoserine or threonine-containing proteins and peptides.
<b>Immunogen</b>	Synthetic phospho-serine/threonine-phenylalanine containing peptide.
<b>Product Application Details</b>	
<b>Applications</b>	Western Blot, ELISA, Immunoprecipitation
<b>Recommended Dilutions</b>	Western Blot, ELISA 1:1000, Immunoprecipitation

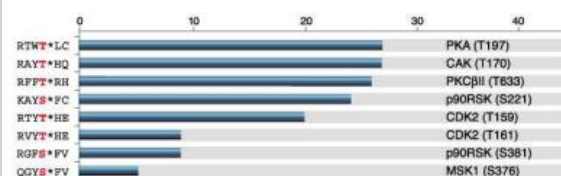


## Images

Western Blot: Phosphoserine Antibody [NB110-15157] - Analysis of calyculin A treated A431 cells,



ELISA: Phosphoserine Antibody [NB110-15157] - Signal to noise ratio of phospho-versus nonphospho-peptides in which the phosphorylation site is adjacent to phenylalanine, tyrosine or tryptophan.





### **Novus Biologicals USA**

10730 E. Briarwood Avenue  
Centennial, CO 80112  
USA

Phone: 303.730.1950  
Toll Free: 1.888.506.6887  
Fax: 303.730.1966  
novus@novusbio.com

### **Bio-Techne Canada**

21 Canmotor Ave  
Toronto, ON M8Z 4E6  
Canada

Phone: 905.827.6400  
Toll Free: 855.668.8722  
Fax: 905.827.6402  
canada.inquires@bio-techne.com

### **Bio-Techne Ltd**

19 Barton Lane  
Abingdon Science Park  
Abingdon, OX14 3NB, United Kingdom  
Phone: (44) (0) 1235 529449  
Free Phone: 0800 37 34 15  
Fax: (44) (0) 1235 533420  
info.EMEA@bio-techne.com

### **General Contact Information**

www.novusbio.com  
Technical Support: technical@novusbio.com  
Orders: orders@novusbio.com  
General: novus@novusbio.com

### **Limitations**

This product is for research use only and is not approved for use in humans or in clinical diagnosis. Primary Antibodies are guaranteed for 1 year from date of receipt.

For more information on our 100% guarantee, please visit [www.novusbio.com/guarantee](http://www.novusbio.com/guarantee)

Earn gift cards/discounts by submitting a review: [www.novusbio.com/reviews/submit/NB110-15157](http://www.novusbio.com/reviews/submit/NB110-15157)

Earn gift cards/discounts by submitting a publication using this product:  
[www.novusbio.com/publications](http://www.novusbio.com/publications)

