

Product Datasheet

LAMP-2/CD107b Antibody (GL2A7) NB110-11470

Unit Size: 0.05 mg

Aliquot and store at -20C or -80C. Avoid freeze-thaw cycles.

www.novusbio.com



technical@novusbio.com

Publications: 1

Protocols, Publications, Related Products, Reviews, Research Tools and Images at:
www.novusbio.com/NB110-11470

Updated 2/7/2023 v.20.1

Earn rewards for product
reviews and publications.

Submit a publication at www.novusbio.com/publications

Submit a review at www.novusbio.com/reviews/destination/NB110-11470



NB110-11470**LAMP-2/CD107b Antibody (GL2A7)**

Product Information	
Unit Size	0.05 mg
Concentration	1.0 mg/ml
Storage	Aliquot and store at -20C or -80C. Avoid freeze-thaw cycles.
Clonality	Monoclonal
Clone	GL2A7
Preservative	0.09% Sodium Azide
Isotype	IgG1
Purity	Protein G purified
Buffer	PBS (pH 7.4) and 50% Glycerol

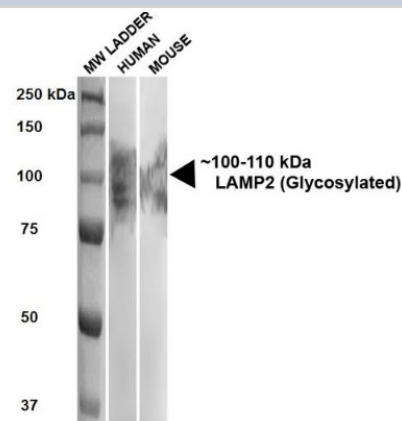
Product Description	
Host	Rat
Gene ID	3920
Gene Symbol	LAMP2
Species	Human, Mouse, Rabbit
Reactivity Notes	Mouse, Rabbit
Marker	Late Endosome / Lysosome marker
Specificity/Sensitivity	Recommended for use in ICC. The will label the presumptive lysosomes and late endosomes in cells that have been permeabilized with saponin.
Immunogen	Purified preparation of mouse liver lysosomal membranes.

Product Application Details	
Applications	Western Blot, Immunocytochemistry/Immunofluorescence, Immunohistochemistry, Immunohistochemistry-Paraffin, Immunoprecipitation
Recommended Dilutions	Western Blot, Immunohistochemistry 1:10-1:500, Immunocytochemistry/Immunofluorescence 1:500-1:1000, Immunoprecipitation, Immunohistochemistry-Paraffin

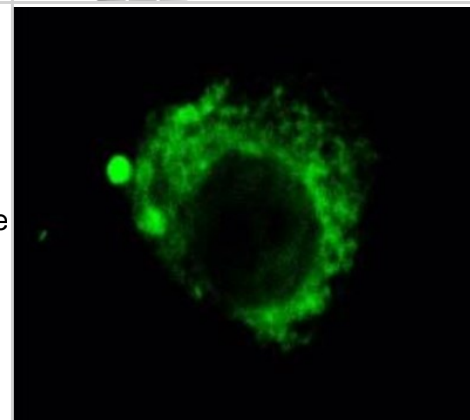


Images

Western Blot: LAMP-2/CD107b Antibody (GL2A7) [NB110-11470] - Western Blot analysis of Human, Mouse HEK293 and 3T3NIH cell lysates showing detection of ~100-110 kDa LAMP-2/CD107b protein using Rat Anti-LAMP-2/CD107b Monoclonal Antibody, Clone GL2A7 (NB110-11470). Lane 1: MW ladder. Lane 2: Human HEK293 lysate (20 ug). Lane 3: Mouse 3T3NIH lysate (10 ug). Block: 5% milk + TBST for 1 hour at RT. Primary Antibody: Rat Anti-LAMP-2/CD107b Monoclonal Antibody (NB110-11470) at 1:500 for 1 hour at RT. Secondary Antibody: HRP Goat Anti-Rat at 1:100 for 1 hour at RT. Color Development: TMB solution for 5 min at RT. Predicted/Observed Size: ~100-110 kDa.



Immunocytochemistry/Immunofluorescence: LAMP-2/CD107b Antibody (GL2A7) [NB110-11470] - Immunocytochemistry/Immunofluorescence analysis using Rat Anti-LAMP-2/CD107b Monoclonal Antibody, Clone GL2A7 (NB110-11470). Tissue: Corneal Endothelial Cell (CEC). Species: Rabbit. Primary Antibody: Rat Anti-LAMP-2/CD107b Monoclonal Antibody (NB110-11470) at 1:1000. Secondary Antibody: FITC Goat Anti-Rat (green). Courtesy of: Eunduck E.P. Kay, Doheny Eye Institute.



Publications

Tang D, Kang R, Livesey KM et al. High-mobility group box 1 is essential for mitochondrial quality control Cell Metab 2011 Jun [PMID: 21641551] (IHC, ICC/IF, Mouse)



Novus Biologicals USA

10730 E. Briarwood Avenue
Centennial, CO 80112
USA

Phone: 303.730.1950
Toll Free: 1.888.506.6887
Fax: 303.730.1966
novus@novusbio.com

Bio-Techne Canada

21 Canmotor Ave
Toronto, ON M8Z 4E6
Canada

Phone: 905.827.6400
Toll Free: 855.668.8722
Fax: 905.827.6402
canada.inquires@bio-techne.com

Bio-Techne Ltd

19 Barton Lane
Abingdon Science Park
Abingdon, OX14 3NB, United Kingdom

Phone: (44) (0) 1235 529449
Free Phone: 0800 37 34 15
Fax: (44) (0) 1235 533420
info.EMEA@bio-techne.com

General Contact Information

www.novusbio.com
Technical Support: technical@novusbio.com
Orders: orders@novusbio.com
General: novus@novusbio.com

Limitations

This product is for research use only and is not approved for use in humans or in clinical diagnosis. Primary Antibodies are guaranteed for 1 year from date of receipt.

For more information on our 100% guarantee, please visit www.novusbio.com/guarantee

Earn gift cards/discounts by submitting a review: www.novusbio.com/reviews/submit/NB110-11470

Earn gift cards/discounts by submitting a publication using this product:
www.novusbio.com/publications

