

# Product Datasheet

## TLR2 Antibody (6C2) NB110-10743

Unit Size: 0.05 mg

Store at 4C.

[www.novusbio.com](http://www.novusbio.com)



[technical@novusbio.com](mailto:technical@novusbio.com)

Protocols, Publications, Related Products, Reviews, Research Tools and Images at:  
[www.novusbio.com/NB110-10743](http://www.novusbio.com/NB110-10743)

Updated 7/16/2023 v.20.1

Earn rewards for product  
reviews and publications.

Submit a publication at [www.novusbio.com/publications](http://www.novusbio.com/publications)

Submit a review at [www.novusbio.com/reviews/destination/NB110-10743](http://www.novusbio.com/reviews/destination/NB110-10743)



**NB110-10743**

TLR2 Antibody (6C2)

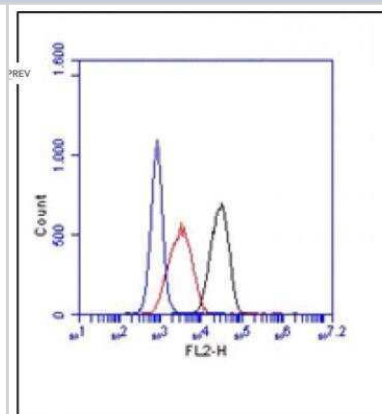
Product Information	
Unit Size	0.05 mg
Concentration	0.1 mg/ml
Storage	Store at 4C.
Clonality	Monoclonal
Clone	6C2
Preservative	0.02% Sodium Azide
Isotype	IgG2b
Purity	Protein A purified
Buffer	PBS, containing 0.1% BSA

Product Description	
Host	Rat
Gene ID	7097
Gene Symbol	TLR2
Species	Mouse
Specificity/Sensitivity	TLR2 (6C2)
Immunogen	CHO cells expressing mouse TLR2.

Product Application Details	
Applications	Flow Cytometry, Immunocytochemistry/Immunofluorescence, Immunoprecipitation
Recommended Dilutions	Flow Cytometry 1:10-1:1000, Immunocytochemistry/Immunofluorescence 1:10-1:2000, Immunoprecipitation 1:10-1:500
Application Notes	Flow Cytometry Use at an assay dependent dilution. IF: Use at an assay dependent dilution. IP: Use at an assay dependent dilution. Before use in biological assays the product should be filter sterilised. Depending on the working concentration, it may need to be dialysed against tissue culture medium to remove the sodium azide added.

**Images**

Flow Cytometry: TLR2 Antibody (6C2) [NB110-10743] - FC in Raw Cells





### **Novus Biologicals USA**

10730 E. Briarwood Avenue  
Centennial, CO 80112  
USA

Phone: 303.730.1950  
Toll Free: 1.888.506.6887  
Fax: 303.730.1966  
novus@novusbio.com

### **Bio-Techne Canada**

21 Canmotor Ave  
Toronto, ON M8Z 4E6  
Canada

Phone: 905.827.6400  
Toll Free: 855.668.8722  
Fax: 905.827.6402  
canada.inquires@bio-techne.com

### **Bio-Techne Ltd**

19 Barton Lane  
Abingdon Science Park  
Abingdon, OX14 3NB, United Kingdom

Phone: (44) (0) 1235 529449  
Free Phone: 0800 37 34 15  
Fax: (44) (0) 1235 533420  
info.EMEA@bio-techne.com

### **General Contact Information**

www.novusbio.com  
Technical Support: technical@novusbio.com  
Orders: orders@novusbio.com  
General: novus@novusbio.com

### **Limitations**

This product is for research use only and is not approved for use in humans or in clinical diagnosis. Primary Antibodies are guaranteed for 1 year from date of receipt.

For more information on our 100% guarantee, please visit [www.novusbio.com/guarantee](http://www.novusbio.com/guarantee)

Earn gift cards/discounts by submitting a review: [www.novusbio.com/reviews/submit/NB110-10743](http://www.novusbio.com/reviews/submit/NB110-10743)

Earn gift cards/discounts by submitting a publication using this product:  
[www.novusbio.com/publications](http://www.novusbio.com/publications)

