

Product Datasheet

ALMS1 Antibody NB100-97823

Unit Size: 0.1 ml

Store at 4C. Do not freeze.

www.novusbio.com



technical@novusbio.com

Protocols, Publications, Related Products, Reviews, Research Tools and Images at:
www.novusbio.com/NB100-97823

Updated 7/17/2022 v.20.1

Earn rewards for product
reviews and publications.

Submit a publication at www.novusbio.com/publications

Submit a review at www.novusbio.com/reviews/destination/NB100-97823



NB100-97823

ALMS1 Antibody

Product Information	
Unit Size	0.1 ml
Concentration	0.2 mg/ml
Storage	Store at 4C. Do not freeze.
Clonality	Polyclonal
Preservative	0.09% Sodium Azide
Isotype	IgG
Purity	Immunogen affinity purified
Buffer	TBS and 0.1% BSA

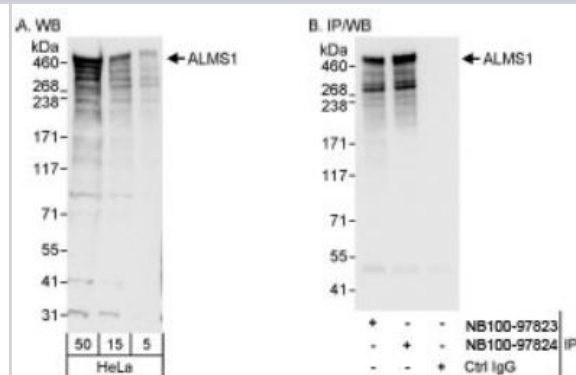
Product Description	
Host	Rabbit
Gene ID	7840
Gene Symbol	ALMS1
Species	Human
Immunogen	The immunogen recognized by this antibody maps to a region between residue 1200 and 1250 of human Alstrom syndrome 1 using the numbering given in entry EAW99731.1 (GenelD 7840).

Product Application Details	
Applications	Western Blot, Immunocytochemistry/Immunofluorescence, Immunoprecipitation
Recommended Dilutions	Western Blot 1:2000-1:10000, Immunocytochemistry/Immunofluorescence 1:500 - 1:2000, Immunoprecipitation 2-5 ug/mg lysate
Application Notes	ICC-IF- Formaldehyde fixation is recommended. Permeabilization with Triton-X 100 is recommended for formaldehyde-fixed cells.

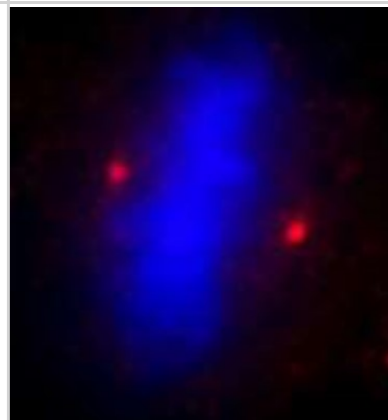


Images

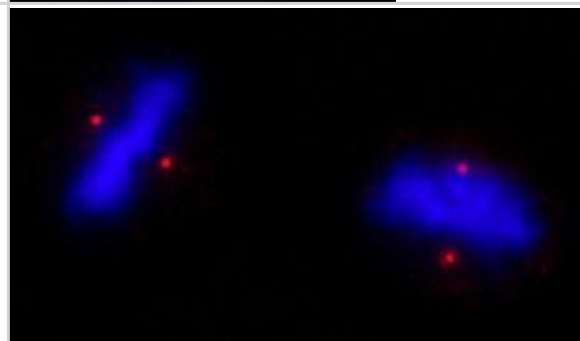
Western Blot: ALMS1 Antibody [NB100-97823] - Whole cell lysate (5, 15 and 50 mcg for WB; 1 mg for IP, 20% of IP loaded) from HeLa cells. NB100-97823 used for WB at 0.04 mcg/ml (A) and 0.1 mcg/ml (B) and used for IP at 3 mcg/mg lysate. ALMS1 was also immunoprecipitated by NB100-97824, which recognizes a downstream epitope.



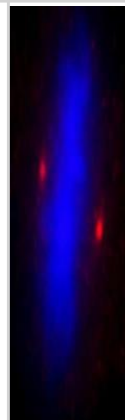
Immunocytochemistry/Immunofluorescence: ALMS1 Antibody [NB100-97823] - NBF-fixed HeLa cell. Antibody used at a dilution of 1:1,000 (0.2ug/ml).



Immunocytochemistry/Immunofluorescence: ALMS1 Antibody [NB100-97823] - NBF-fixed asynchronous HeLa cells. At a dilution of 1:250.



Immunocytochemistry/Immunofluorescence: ALMS1 Antibody [NB100-97823] - NBF-fixed HeLa cell. Antibody used at a dilution of 1:1,000 (0.2ug/ml).





Novus Biologicals USA

10730 E. Briarwood Avenue
Centennial, CO 80112
USA
Phone: 303.730.1950
Toll Free: 1.888.506.6887
Fax: 303.730.1966
novus@novusbio.com

Bio-Techne Canada

21 Canmotor Ave
Toronto, ON M8Z 4E6
Canada
Phone: 905.827.6400
Toll Free: 855.668.8722
Fax: 905.827.6402
canada.inquires@bio-techne.com

Bio-Techne Ltd

19 Barton Lane
Abingdon Science Park
Abingdon, OX14 3NB, United Kingdom
Phone: (44) (0) 1235 529449
Free Phone: 0800 37 34 15
Fax: (44) (0) 1235 533420
info.EMEA@bio-techne.com

General Contact Information

www.novusbio.com
Technical Support: technical@novusbio.com
Orders: orders@novusbio.com
General: novus@novusbio.com

Limitations

This product is for research use only and is not approved for use in humans or in clinical diagnosis. Primary Antibodies are guaranteed for 1 year from date of receipt.

For more information on our 100% guarantee, please visit www.novusbio.com/guarantee

Earn gift cards/discounts by submitting a review: www.novusbio.com/reviews/submit/NB100-97823

Earn gift cards/discounts by submitting a publication using this product:
www.novusbio.com/publications

