

# Product Datasheet

## xCT Antibody Pack

### NB100-937SuperNovusPack

Unit Size: 2 Vials

Store at 4C short term. Aliquot and store at -20C long term. Avoid freeze-thaw cycles.

[www.novusbio.com](http://www.novusbio.com)



[technical@novusbio.com](mailto:technical@novusbio.com)

Reviews: 1

Protocols, Publications, Related Products, Reviews, Research Tools and Images at:  
[www.novusbio.com/NB100-937](http://www.novusbio.com/NB100-937)

Updated 7/4/2023 v.20.1

Earn rewards for product  
reviews and publications.

Submit a publication at [www.novusbio.com/publications](http://www.novusbio.com/publications)

Submit a review at [www.novusbio.com/reviews/destination/NB100-937](http://www.novusbio.com/reviews/destination/NB100-937)



**NB100-937SuperNovusPack****xCT Antibody Pack**

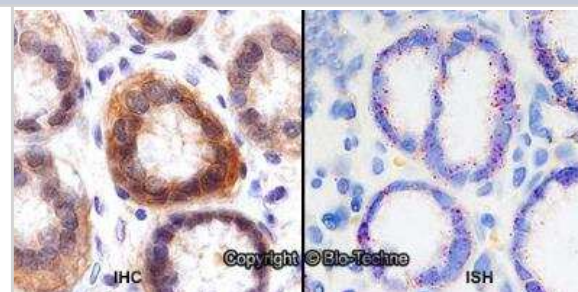
<b>Product Information</b>	
<b>Unit Size</b>	2 Vials
<b>Concentration</b>	Concentration of individual antibodies may be found on the vial label. If unlisted please contact technical services.
<b>Storage</b>	Store at 4C short term. Aliquot and store at -20C long term. Avoid freeze-thaw cycles.

<b>Product Description</b>	
<b>Description</b>	This pack contains 1 vial each of: NB300-317 (0.1 mL) and NB300-318 (0.1 mL).
<b>Host</b>	Rabbit
<b>Gene ID</b>	23657
<b>Gene Symbol</b>	SLC7A11
<b>Species</b>	Human, Mouse
<b>Reactivity Notes</b>	See individual datasheets.
<b>Immunogen</b>	See individual datasheets.
<b>Kit Components</b>	NB300-318: xCT Antibody - BSA Free, NB300-317: xCT Antibody - BSA Free

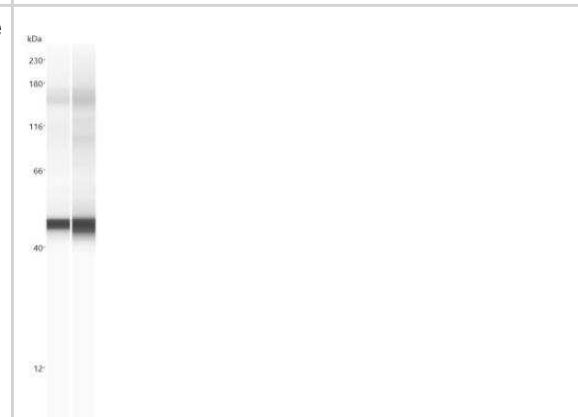
<b>Product Application Details</b>	
<b>Applications</b>	Western Blot, Simple Western, Immunohistochemistry, Dual RNAscope ISH-IHC
<b>Recommended Dilutions</b>	Western Blot, Simple Western, Immunohistochemistry, Dual RNAscope ISH-IHC
<b>Application Notes</b>	See individual datasheets for validated applications.

**Images**

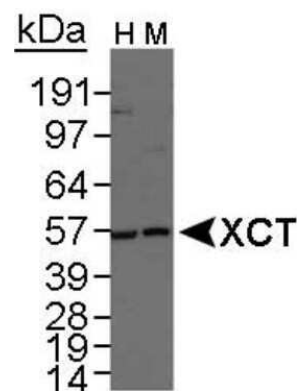
Dual RNAscope ISH-IHC: xCT Antibody Pack [NB100-937] - Formalin-fixed paraffin-embedded tissue sections of human stomach were probed for xCT mRNA (ACD RNAscope Probe, catalog #422688; Fast Red chromogen, ACD catalog # 322750). Adjacent tissue section was processed for immunohistochemistry using Rabbit Polyclonal (Novus Biologicals catalog # NB300-318) at 0.25ug/mL with 1 hour incubation at room temperature followed by incubation with anti-rabbit IgG VisUCyte HRP Polymer Antibody (Catalog # VC003) and DAB chromogen (yellow-brown). Tissue was counterstained with hematoxylin (blue). Specific staining was localized to glandular cells.



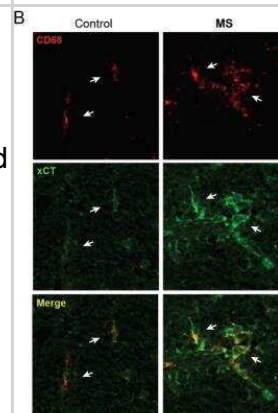
Simple Western: xCT Antibody Pack [NB100-937] - Simple Western lane view shows a specific band for xCT using NB300-318 at 25 ug/ml in HeLa and HeLa + DEM cell lysates. This experiment was performed under reducing conditions using the 12-230 kDa separation system. xCT Antibody [NB300-318]



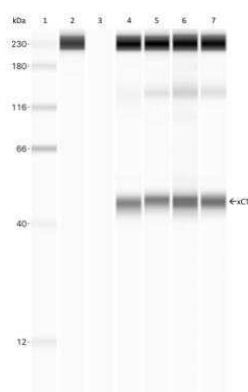
Western Blot: xCT Antibody Pack [NB100-937] - Detection of xCT in total human and mouse stomach lysate, respectively, using NB 300-318. 1 minute ECL exposure.



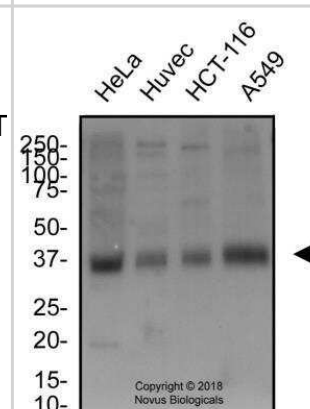
Immunohistochemistry: xCT Antibody Pack [NB100-937] - xCT expression is enhanced in CD68+ cells from MS spinal cord. CD68+ cells (arrows) show enhanced xCT expression in MS patients as compared to controls. CD68+ macrophages are round shaped and form clusters in MS patients, whereas in controls, CD68+ cells appear isolated and long shaped. Scale bar = 50 um. Image collected and cropped by CiteAb from the following publication (<https://jneuroinflammation.biomedcentral.com/articles/10.1186/1742-2094-8-63>), licensed under a CC-BY licence. xCT Antibody [NB300-317]



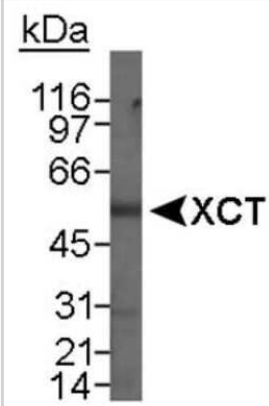
Simple Western: xCT Antibody Pack [NB100-937] - (1) ladder, (2) no lysate + xCT, 100ug/ml, (3) human brain frontal cortex membrane lysate, no primary antibody, (4-7) human brain lysates, 0.03mg/ml, xCT, 100ug/ml.



Western Blot: xCT Antibody Pack [NB100-937] - Total protein from human HeLa, Huvec, HCT-116 and A549 cells was separated on a 12% gel by SDS-PAGE, transferred to PVDF membrane and blocked in 5% non-fat milk in TBST. The membrane was probed with 2.0 ug/ml anti-xCT in block buffer and detected with an anti-rabbit HRP secondary antibody using chemiluminescence. xCT Antibody [NB300-317]



Western Blot: xCT Antibody Pack [NB100-937] - Detection of XCT in total human stomach lysate using NB 300-317. 15 minute ECL exposure.





### **Novus Biologicals USA**

10730 E. Briarwood Avenue  
Centennial, CO 80112  
USA

Phone: 303.730.1950  
Toll Free: 1.888.506.6887  
Fax: 303.730.1966  
novus@novusbio.com

### **Bio-Techne Canada**

21 Canmotor Ave  
Toronto, ON M8Z 4E6  
Canada

Phone: 905.827.6400  
Toll Free: 855.668.8722  
Fax: 905.827.6402  
canada.inquires@bio-techne.com

### **Bio-Techne Ltd**

19 Barton Lane  
Abingdon Science Park  
Abingdon, OX14 3NB, United Kingdom  
Phone: (44) (0) 1235 529449  
Free Phone: 0800 37 34 15  
Fax: (44) (0) 1235 533420  
info.EMEA@bio-techne.com

### **General Contact Information**

www.novusbio.com  
Technical Support: technical@novusbio.com  
Orders: orders@novusbio.com  
General: novus@novusbio.com

### **Limitations**

This product is for research use only and is not approved for use in humans or in clinical diagnosis. Antibody Packs are guaranteed for 1 year from date of receipt.

For more information on our 100% guarantee, please visit [www.novusbio.com/guarantee](http://www.novusbio.com/guarantee)

Earn gift cards/discounts by submitting a review: [www.novusbio.com/reviews/submit/NB100-937](http://www.novusbio.com/reviews/submit/NB100-937)

Earn gift cards/discounts by submitting a publication using this product:  
[www.novusbio.com/publications](http://www.novusbio.com/publications)

