

# Product Datasheet

## Neuropeptide FF R1/NPFFR1 Antibody NB100-93424

Unit Size: 0.1 mg

Store at -20C. Avoid freeze-thaw cycles.

[www.novusbio.com](http://www.novusbio.com)



[technical@novusbio.com](mailto:technical@novusbio.com)

### Publications: 1

Protocols, Publications, Related Products, Reviews, Research Tools and Images at:  
[www.novusbio.com/NB100-93424](http://www.novusbio.com/NB100-93424)

Updated 10/23/2024 v.20.1

Earn rewards for product  
reviews and publications.

Submit a publication at [www.novusbio.com/publications](http://www.novusbio.com/publications)

Submit a review at [www.novusbio.com/reviews/destination/NB100-93424](http://www.novusbio.com/reviews/destination/NB100-93424)



**NB100-93424****Neuropeptide FF R1/NPFFR1 Antibody****Product Information**

<b>Unit Size</b>	0.1 mg
<b>Concentration</b>	0.5 mg/ml
<b>Storage</b>	Store at -20C. Avoid freeze-thaw cycles.
<b>Clonality</b>	Polyclonal
<b>Preservative</b>	0.02% Sodium Azide
<b>Isotype</b>	IgG
<b>Purity</b>	Immunogen affinity purified
<b>Buffer</b>	Tris saline (20 mM Tris pH 7.3, 150 mM NaCl), 0.5% BSA

**Product Description**

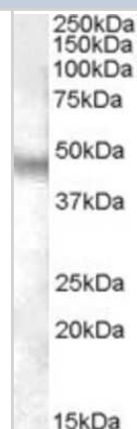
<b>Host</b>	Goat
<b>Gene ID</b>	64106
<b>Gene Symbol</b>	NPFFR1
<b>Species</b>	Human
<b>Immunogen</b>	Peptide with sequence C-RPSGSHKEAYSERP corresponding to internal region according to NP_071429.1.

**Product Application Details**

<b>Applications</b>	Western Blot, Peptide ELISA
<b>Recommended Dilutions</b>	Western Blot 0.03 - 0.1 ug/ml, Peptide ELISA Detection limit 1:64000
<b>Application Notes</b>	WB: Approx. 48 kDa band observed in human brain (cerebellum and cerebral cortex) lysates (calculated MW of 47.8 kDa band according to NP_071429.1).

**Images**

Western Blot: NPFF1 Receptor Antibody [NB100-93424] - Analysis of NPFF1 Receptor in Human Brain (Cerebellum) lysate (35ug protein in RIPA buffer) using this antibody at 0.03 ug/ml. Primary incubation was 1 hour. Detected by chemiluminescence.

**Publications**

Gouarderes C, Mazarguil H, Mollereau C et al. Functional differences between NPFF1 and NPFF2 receptor coupling: high intrinsic activities of RFamide-related peptides on stimulation of [35S]GTPgammaS binding. Neuropharmacology 2007-02-01 [PMID: 17011599]



### **Novus Biologicals USA**

10730 E. Briarwood Avenue  
Centennial, CO 80112  
USA  
Phone: 303.730.1950  
Toll Free: 1.888.506.6887  
Fax: 303.730.1966  
nb-customerservice@bio-techne.com

### **Bio-Techne Canada**

21 Canmotor Ave  
Toronto, ON M8Z 4E6  
Canada  
Phone: 905.827.6400  
Toll Free: 855.668.8722  
Fax: 905.827.6402  
canada.inquires@bio-techne.com

### **Bio-Techne Ltd**

19 Barton Lane  
Abingdon Science Park  
Abingdon, OX14 3NB, United Kingdom  
Phone: (44) (0) 1235 529449  
Free Phone: 0800 37 34 15  
Fax: (44) (0) 1235 533420  
info.EMEA@bio-techne.com

### **General Contact Information**

www.novusbio.com  
Technical Support: nb-technical@bio-techne.com  
Orders: nb-customerservice@bio-techne.com  
General: novus@novusbio.com

### **Products Related to NB100-93424**

HAF017	Rabbit anti-Goat IgG Secondary Antibody [HRP (Horseradish Peroxidase)]
HAF109	Donkey anti-Goat IgG Secondary Antibody [HRP (Horseradish Peroxidase)]
NB410-28088-1mg	Goat IgG Isotype Control
NBP2-13671PEP	Neuropeptide FF R1/NPFFR1 Recombinant Protein Antigen

### **Limitations**

This product is for research use only and is not approved for use in humans or in clinical diagnosis. Primary Antibodies are guaranteed for 1 year from date of receipt.

For more information on our 100% guarantee, please visit [www.novusbio.com/guarantee](http://www.novusbio.com/guarantee)

Earn gift cards/discounts by submitting a review: [www.novusbio.com/reviews/submit/NB100-93424](http://www.novusbio.com/reviews/submit/NB100-93424)

Earn gift cards/discounts by submitting a publication using this product:  
[www.novusbio.com/publications](http://www.novusbio.com/publications)



