

Product Datasheet

PHF8 Antibody NB100-93313

Unit Size: 0.1 ml

Store at 4C. Do not freeze.

www.novusbio.com



technical@novusbio.com

Publications: 2

Protocols, Publications, Related Products, Reviews, Research Tools and Images at:
www.novusbio.com/NB100-93313

Updated 10/23/2024 v.20.1

Earn rewards for product
reviews and publications.

Submit a publication at www.novusbio.com/publications

Submit a review at www.novusbio.com/reviews/destination/NB100-93313



NB100-93313

PHF8 Antibody

| Product Information | |
|---------------------|-----------------------------|
| Unit Size | 0.1 ml |
| Concentration | 0.2 mg/ml |
| Storage | Store at 4C. Do not freeze. |
| Clonality | Polyclonal |
| Preservative | 0.09% Sodium Azide |
| Isotype | IgG |
| Purity | Immunogen affinity purified |
| Buffer | TBS and 0.1% BSA |

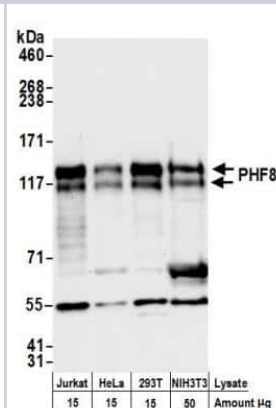
| Product Description | |
|---------------------|--|
| Host | Rabbit |
| Gene ID | 23133 |
| Gene Symbol | PHF8 |
| Species | Human, Mouse |
| Immunogen | The immunogen recognized by this antibody maps to a region between residue 650 and 700 of human PHD finger protein 8 (CAI41576.1). |

| Product Application Details | |
|-----------------------------|--|
| Applications | Western Blot, Immunohistochemistry, Immunohistochemistry-Paraffin, Immunoprecipitation, Chromatin Immunoprecipitation Sequencing |
| Recommended Dilutions | Western Blot 1:2000-1:10000, Immunohistochemistry 1:100- 1:500, Immunoprecipitation 2-10 ug/mg lysate, Immunohistochemistry-Paraffin 1:100-1:500, Chromatin Immunoprecipitation Sequencing |
| Application Notes | ChIP-Seq 10 ug as per Ram O et al., Cell. 2011 Dec 23;147(7):1628-39. Epitope retrieval with citrate buffer pH6.0 is recommended for FFPE tissue sections. |

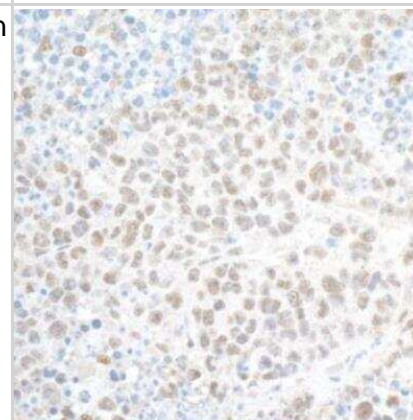


Images

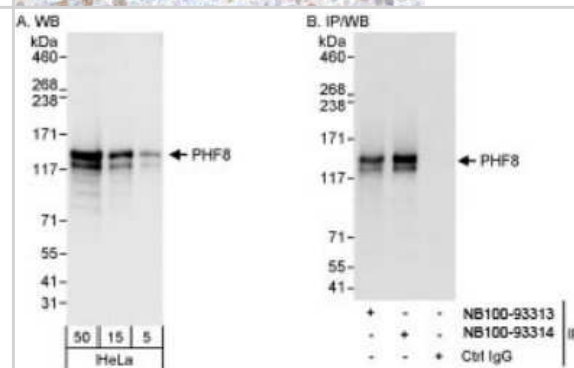
Western Blot: PHF8 Antibody [NB100-93313] - Detection of human and mouse PHF8 by western blot. Samples: Whole cell lysate (15 and 50 ug) from Jurkat, HeLa, HEK293T, and NIH 3T3 cells prepared using NETN lysis buffer. Antibody: Affinity purified rabbit anti-PHF8 antibody NB100-93313 used for WB at 0.04 ug/ml. Detection: Chemiluminescence with an exposure time of 10 seconds.



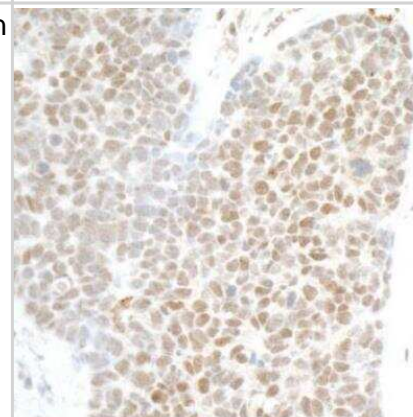
Immunohistochemistry-Paraffin: PHF8 Antibody [NB100-93313] - Section of mouse plasmacytoma. Antibody: Affinity purified rabbit anti- PHF8 used at a dilution of 1:200 (1 ug/ml). Detection: DAB



Western Blot: PHF8 Antibody [NB100-93313] - Detection of Human PHF8 on HeLa whole cell lysate using NB100-93313. PHF8 was also immunoprecipitated by rabbit anti-PHF8 antibody NB100-93314.



Immunohistochemistry-Paraffin: PHF8 Antibody [NB100-93313] - Section of human small cell lung cancer. Antibody: Affinity purified rabbit anti-PHF8 used at a dilution of 1:200 (1ug/ml). Detection: DAB



Publications

Ma S, Zhang J, Guo Q et al. Disrupting PHF8-TOPBP1 connection elicits a breast tumor-specific vulnerability to chemotherapeutics Cancer letters 2022-01-17 [PMID: 35051531] (WB, Mouse)

Chen X, Wang S, Zhou Y et al. Phf8 histone demethylase deficiency causes cognitive impairments through the mTOR pathway Nat Commun 2018-01-09 [PMID: 29317619] (Human)





Novus Biologicals USA

10730 E. Briarwood Avenue
Centennial, CO 80112
USA
Phone: 303.730.1950
Toll Free: 1.888.506.6887
Fax: 303.730.1966
nb-customerservice@bio-techne.com

Bio-Techne Canada

21 Canmotor Ave
Toronto, ON M8Z 4E6
Canada
Phone: 905.827.6400
Toll Free: 855.668.8722
Fax: 905.827.6402
canada.inquires@bio-techne.com

Bio-Techne Ltd

19 Barton Lane
Abingdon Science Park
Abingdon, OX14 3NB, United Kingdom
Phone: (44) (0) 1235 529449
Free Phone: 0800 37 34 15
Fax: (44) (0) 1235 533420
info.EMEA@bio-techne.com

General Contact Information

www.novusbio.com
Technical Support: nb-technical@bio-techne.com
Orders: nb-customerservice@bio-techne.com
General: novus@novusbio.com

Products Related to NB100-93313

| | |
|---------------|---|
| HAF008 | Goat anti-Rabbit IgG Secondary Antibody [HRP] |
| NB7160 | Goat anti-Rabbit IgG (H+L) Secondary Antibody [HRP] |
| NBP2-24891 | Rabbit IgG Isotype Control |
| NBP2-56147PEP | PHF8 Recombinant Protein Antigen |

Limitations

This product is for research use only and is not approved for use in humans or in clinical diagnosis. Primary Antibodies are guaranteed for 1 year from date of receipt.

For more information on our 100% guarantee, please visit www.novusbio.com/guarantee

Earn gift cards/discounts by submitting a review: www.novusbio.com/reviews/submit/NB100-93313

Earn gift cards/discounts by submitting a publication using this product:
www.novusbio.com/publications

