

Product Datasheet

ELF5 Antibody NB100-92411

Unit Size: 0.1 mg

Store at 4C short term. Aliquot and store at -20C long term. Avoid freeze-thaw cycles.

www.novusbio.com



technical@novusbio.com

Protocols, Publications, Related Products, Reviews, Research Tools and Images at:
www.novusbio.com/NB100-92411

Updated 10/3/2017 v.20.1

Earn rewards for product
reviews and publications.

Submit a publication at www.novusbio.com/publications

Submit a review at www.novusbio.com/reviews/destination/NB100-92411



NB100-92411

ELF5 Antibody

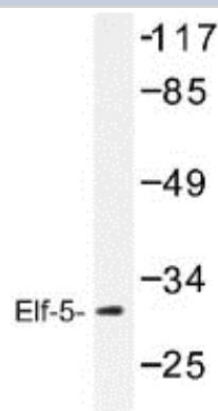
Product Information	
Unit Size	0.1 mg
Concentration	1.0 mg/ml
Storage	Store at 4C short term. Aliquot and store at -20C long term. Avoid freeze-thaw cycles.
Clonality	Polyclonal
Preservative	0.05% Sodium Azide
Purity	Immunogen affinity purified
Buffer	PBS (pH 7.2)
Target Molecular Weight	31 kDa

Product Description	
Host	Rabbit
Gene ID	2001
Gene Symbol	ELF5
Species	Human, Mouse, Rat
Specificity/Sensitivity	ELF5 (W215) detects endogenous levels of ELF5 (W215) protein.
Immunogen	Synthetic peptide, corresponding to amino acids 182-230 of Human Elf-5.

Product Application Details	
Applications	Western Blot, Immunocytochemistry/Immunofluorescence
Recommended Dilutions	Western Blot 1:500-1:1000, Immunocytochemistry/Immunofluorescence 1:50-1:200
Application Notes	Western blot (WB) analysis of ELF5 (W215) pAb in extracts from Jurkat cells.

Images

Western Blot: ELF5 Antibody [NB100-92411] - Western blot (WB) analysis of ELF5 (W215) antibody in extracts from Jurkat cells.





Novus Biologicals USA

10730 E. Briarwood Avenue
Centennial, CO 80112
USA

Phone: 303.730.1950
Toll Free: 1.888.506.6887
Fax: 303.730.1966
novus@novusbio.com

Novus Biologicals Canada

461 North Service Road West, Unit B37
Oakville, ON L6M 2V5
Canada

Phone: 905.827.6400
Toll Free: 855.668.8722
Fax: 905.827.6402
canada@novusbio.com

Novus Biologicals Europe

19 Barton Lane
Abingdon Science Park
Abingdon, OX14 3NB, United Kingdom

Phone: (44) (0) 1235 529449
Free Phone: 0800 37 34 15
Fax: (44) (0) 1235 533420
info@bio-techne.com

General Contact Information

www.novusbio.com
Technical Support: technical@novusbio.com
Orders: orders@novusbio.com
General: novus@novusbio.com

Limitations

This product is for research use only and is not approved for use in humans or in clinical diagnosis. Primary Antibodies are guaranteed for 1 year from date of receipt.

For more information on our 100% guarantee, please visit www.novusbio.com/guarantee

Earn gift cards/discounts by submitting a review: www.novusbio.com/reviews/submit/NB100-92411

Earn gift cards/discounts by submitting a publication using this product:
www.novusbio.com/publications

