

Product Datasheet

PLA2G4A Antibody NB100-92066

Unit Size: 0.1 ml

Store at 4C short term. Aliquot and store at -20C long term. Avoid freeze-thaw cycles.

www.novusbio.com



technical@novusbio.com

Protocols, Publications, Related Products, Reviews, Research Tools and Images at:
www.novusbio.com/NB100-92066

Updated 10/3/2017 v.20.1

Earn rewards for product
reviews and publications.

Submit a publication at www.novusbio.com/publications

Submit a review at www.novusbio.com/reviews/destination/NB100-92066



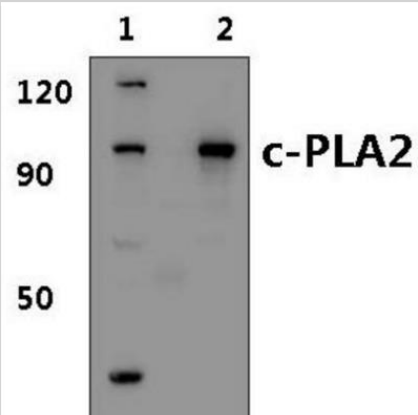
NB100-92066

PLA2G4A Antibody

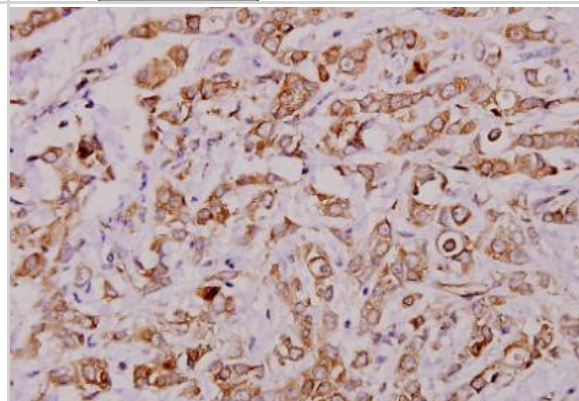
Product Information	
Unit Size	0.1 ml
Concentration	1.0 mg/ml
Storage	Store at 4C short term. Aliquot and store at -20C long term. Avoid freeze-thaw cycles.
Clonality	Polyclonal
Preservative	0.05% Sodium Azide
Purity	Immunogen affinity purified
Buffer	PBS (pH 7.2)
Target Molecular Weight	100 kDa
Product Description	
Host	Rabbit
Gene ID	5321
Gene Symbol	PLA2G4A
Species	Human, Mouse, Rat
Immunogen	Synthetic peptide, corresponding to amino acids 480-530 of Human c-PLA2.
Product Application Details	
Applications	Western Blot, Immunocytochemistry/Immunofluorescence, Immunohistochemistry, Immunohistochemistry-Paraffin
Recommended Dilutions	Western Blot 1:500-1:1000, Immunohistochemistry 1:50-1:200, Immunocytochemistry/Immunofluorescence 1:50-1:200, Immunohistochemistry-Paraffin 1:50-1:200

Images

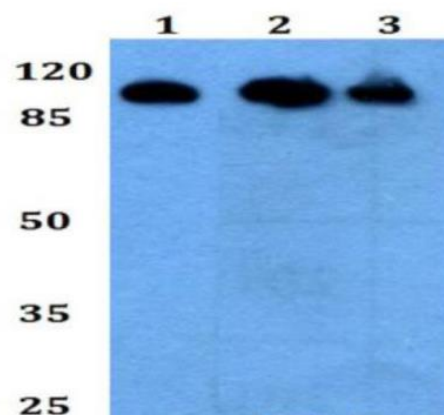
Western Blot: PLA2G4A Antibody [NB100-92066] - Analysis of PLA2G4A (N499) pAb at 1:500 dilution Lane1:A549 whole cell lysate(40 ug) Lane2:BV2 whole cell lysate(15 ug).



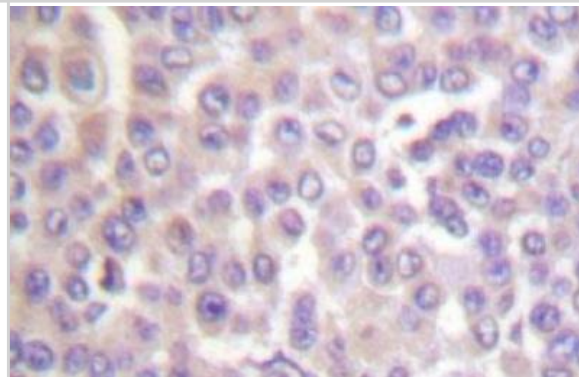
Immunohistochemistry-Paraffin: PLA2G4A Antibody [NB100-92066] - Analyzes of PLA2G4A (N499) pAb in paraffin-embedded human breast carcinoma tissue at 1:100.



Western Blot: PLA2G4A Antibody [NB100-92066] - Analysis of Phospholipase at 1:500 dilution. Lane 1 - HEK293T whole cell lysate, Lane 2 - Raw264.7 whole cell lysate, Lane 3 - PC12 whole cell lysate



Immunohistochemistry-Paraffin: PLA2G4A Antibody [NB100-92066] - Analyzes in paraffin-embedded human colon carcinoma tissue.





Novus Biologicals USA

10730 E. Briarwood Avenue
Centennial, CO 80112
USA

Phone: 303.730.1950
Toll Free: 1.888.506.6887
Fax: 303.730.1966
novus@novusbio.com

Novus Biologicals Canada

461 North Service Road West, Unit B37
Oakville, ON L6M 2V5
Canada

Phone: 905.827.6400
Toll Free: 855.668.8722
Fax: 905.827.6402
canada@novusbio.com

Novus Biologicals Europe

19 Barton Lane
Abingdon Science Park
Abingdon, OX14 3NB, United Kingdom

Phone: (44) (0) 1235 529449
Free Phone: 0800 37 34 15
Fax: (44) (0) 1235 533420
info@bio-techne.com

General Contact Information

www.novusbio.com
Technical Support: technical@novusbio.com
Orders: orders@novusbio.com
General: novus@novusbio.com

Limitations

This product is for research use only and is not approved for use in humans or in clinical diagnosis. Primary Antibodies are guaranteed for 1 year from date of receipt.

For more information on our 100% guarantee, please visit www.novusbio.com/guarantee

Earn gift cards/discounts by submitting a review: www.novusbio.com/reviews/submit/NB100-92066

Earn gift cards/discounts by submitting a publication using this product:
www.novusbio.com/publications

