

# Product Datasheet

## GSK-3 beta Antibody NB100-92035

Unit Size: 0.1 mg

Store at 4C short term. Aliquot and store at -20C long term. Avoid freeze-thaw cycles.

[www.novusbio.com](http://www.novusbio.com)



[technical@novusbio.com](mailto:technical@novusbio.com)

Protocols, Publications, Related Products, Reviews, Research Tools and Images at:  
[www.novusbio.com/NB100-92035](http://www.novusbio.com/NB100-92035)

Updated 10/3/2017 v.20.1

Earn rewards for product  
reviews and publications.

Submit a publication at [www.novusbio.com/publications](http://www.novusbio.com/publications)

Submit a review at [www.novusbio.com/reviews/destination/NB100-92035](http://www.novusbio.com/reviews/destination/NB100-92035)



**NB100-92035**

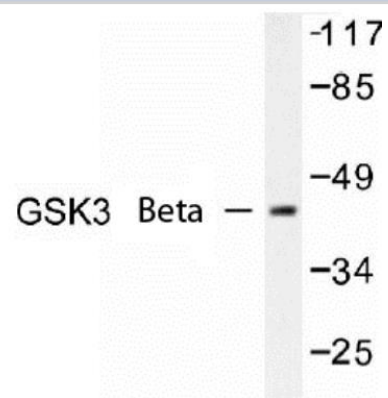
GSK-3 beta Antibody

Product Information	
Unit Size	0.1 mg
Concentration	1.0 mg/ml
Storage	Store at 4C short term. Aliquot and store at -20C long term. Avoid freeze-thaw cycles.
Clonality	Polyclonal
Preservative	0.05% Sodium Azide
Purity	Immunogen affinity purified
Buffer	PBS (pH 7.2)
Target Molecular Weight	46 kDa
Product Description	
Host	Rabbit
Gene ID	2932
Gene Symbol	GSK3B
Species	Human, Mouse, Rat
Immunogen	Synthetic peptide, corresponding to amino acids N-terminus of Human GSK3beta.
Product Application Details	
Applications	Western Blot, Immunohistochemistry, Immunohistochemistry-Paraffin
Recommended Dilutions	Western Blot 1:500-1:1000, Immunohistochemistry 1:50-1:200, Immunohistochemistry-Paraffin 1:50-1:200
Application Notes	Western blot (WB) analysis of GSK3 beta (S2) pAb in extracts from 293 cells treated with serum 10% 15 prime or from Jurkat cells treated with Insulin 0.01U/ml 15 prime . Immunohistochemistry (IHC) analyzes of GSK3 beta (S2) pAb in paraffin-embedded hu

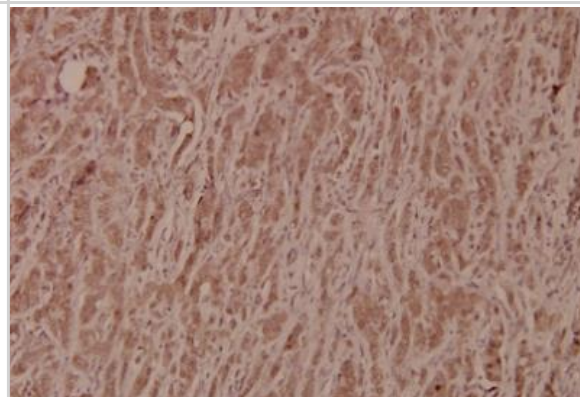


## Images

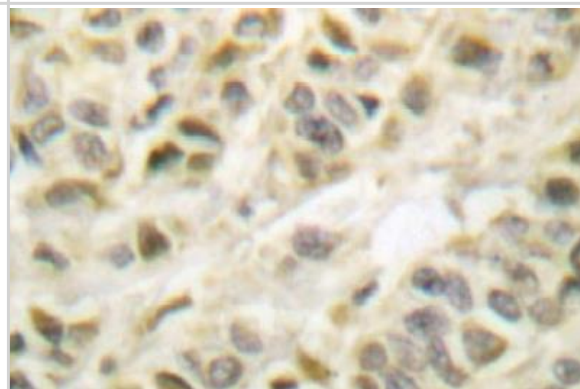
Western Blot: GSK3 beta Antibody [NB100-92035] - Western blot (WB) analysis of GSK3 beta (S2) Antibody in extracts from ?293 cells treated with serum 10% 15min or from Jurkat cells treated with Insulin 0.01U/ml 15min.



Immunohistochemistry-Paraffin: GSK-3 beta Antibody [NB100-92035] - Paraffin-embedded human breast carcinoma tissue at 1:100.



Immunohistochemistry: GSK3 beta Antibody [NB100-92035] - Immunohistochemistry (IHC) analyzes of GSK3 beta (S2) Antibody in paraffin-embedded human breast carcinoma tissue.





### **Novus Biologicals USA**

10730 E. Briarwood Avenue  
Centennial, CO 80112  
USA  
Phone: 303.730.1950  
Toll Free: 1.888.506.6887  
Fax: 303.730.1966  
novus@novusbio.com

### **Novus Biologicals Canada**

461 North Service Road West, Unit B37  
Oakville, ON L6M 2V5  
Canada  
Phone: 905.827.6400  
Toll Free: 855.668.8722  
Fax: 905.827.6402  
canada@novusbio.com

### **Novus Biologicals Europe**

19 Barton Lane  
Abingdon Science Park  
Abingdon, OX14 3NB, United Kingdom  
Phone: (44) (0) 1235 529449  
Free Phone: 0800 37 34 15  
Fax: (44) (0) 1235 533420  
info@bio-techne.com

### **General Contact Information**

www.novusbio.com  
Technical Support: technical@novusbio.com  
Orders: orders@novusbio.com  
General: novus@novusbio.com

### **Limitations**

This product is for research use only and is not approved for use in humans or in clinical diagnosis. Primary Antibodies are guaranteed for 1 year from date of receipt.

For more information on our 100% guarantee, please visit [www.novusbio.com/guarantee](http://www.novusbio.com/guarantee)

Earn gift cards/discounts by submitting a review: [www.novusbio.com/reviews/submit/NB100-92035](http://www.novusbio.com/reviews/submit/NB100-92035)

Earn gift cards/discounts by submitting a publication using this product:  
[www.novusbio.com/publications](http://www.novusbio.com/publications)

