

Product Datasheet

RB1 Antibody NB100-91947

Unit Size: 0.1 ml

Store at 4C short term. Aliquot and store at -20C long term. Avoid freeze-thaw cycles.

www.novusbio.com



technical@novusbio.com

Publications: 1

Protocols, Publications, Related Products, Reviews, Research Tools and Images at:
www.novusbio.com/NB100-91947

Updated 10/3/2017 v.20.1

Earn rewards for product
reviews and publications.

Submit a publication at www.novusbio.com/publications

Submit a review at www.novusbio.com/reviews/destination/NB100-91947



NB100-91947

RB1 Antibody

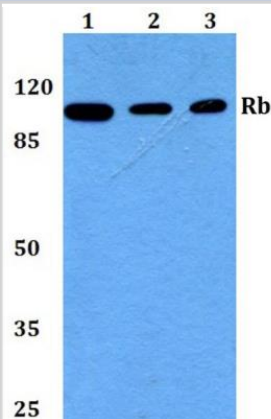
Product Information	
Unit Size	0.1 ml
Concentration	1.0 mg/ml
Storage	Store at 4C short term. Aliquot and store at -20C long term. Avoid freeze-thaw cycles.
Clonality	Polyclonal
Preservative	0.05% Sodium Azide
Purity	Immunogen affinity purified
Buffer	PBS (pH 7.2)
Target Molecular Weight	106 kDa

Product Description	
Host	Rabbit
Gene ID	5925
Gene Symbol	RB1
Species	Human, Mouse, Rat
Immunogen	Synthetic peptide, corresponding to amino acids 741-790 of Human Rb.

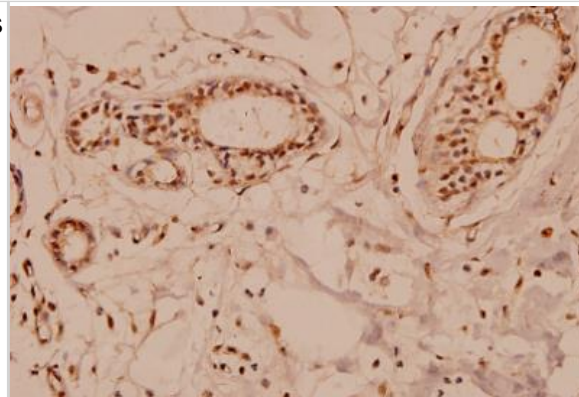
Product Application Details	
Applications	Western Blot, Immunocytochemistry/Immunofluorescence, Immunohistochemistry, Immunohistochemistry-Paraffin
Recommended Dilutions	Western Blot 1:500-1:1000, Immunohistochemistry 1:50-1:200, Immunocytochemistry/Immunofluorescence 1:50-1:200, Immunohistochemistry-Paraffin 1:50-1:200
Application Notes	Western blot (WB) analysis of Retinoblastoma 1 (T774) pAb in extracts from K562 cells. Immunohistochemistry (IHC) analyzes of Retinoblastoma 1 (T774) pAb in paraffin-embedded human breast carcinoma tissue.

Images

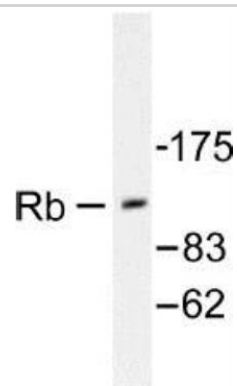
Western Blot: RB1 Antibody [NB100-91947] - Analysis of Rb (T774) pAb at 1:500 dilution Lane1:A549 whole cell lysate Lane2:Raw264.7 whole cell lysate Lane3:H9C2 whole cell lysate



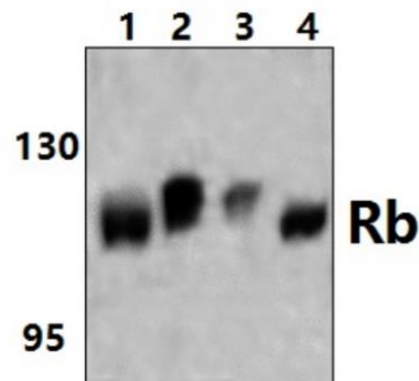
Immunohistochemistry-Paraffin: RB1 Antibody [NB100-91947] - analyzes of Rb pAb in paraffin-embedded human breast carcinoma tissue at 1:100.



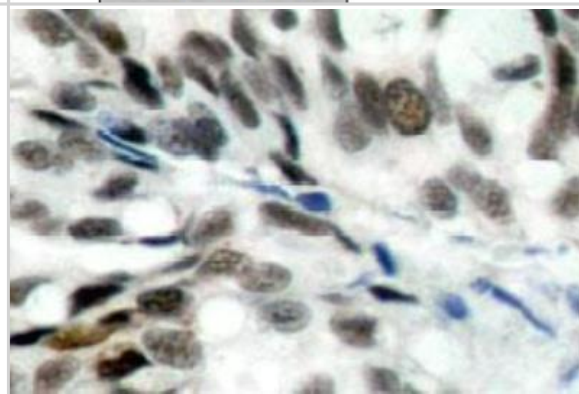
Western Blot: RB1 Antibody [NB100-91947] - Analysis of RB1 (T774) Antibody in extracts from K562 cells.



Western Blot: RB1 Antibody [NB100-91947] - Analysis of Rb (T774) pAb at 1:500 dilution Lane1:Hela whole cell lysate(40ug) Lane2:HEK293T whole cell lysate(20ug) Lane3:NIH-3T3 whole cell lysate(40ug) Lane4:PC12 whole cell lysate(40ug)



Immunohistochemistry-Paraffin: RB1 Antibody [NB100-91947] - Analyzes of paraffin-embedded human breast carcinoma tissue.



Publications

Rho JH, Lampe PD. High-Throughput Screening for Native Autoantigen-Autoantibody Complexes Using Antibody Microarrays J Proteome Res 2013 Mar 29 [PMID: 23541305] (Human)



Novus Biologicals USA

10730 E. Briarwood Avenue
Centennial, CO 80112
USA

Phone: 303.730.1950
Toll Free: 1.888.506.6887
Fax: 303.730.1966
novus@novusbio.com

Novus Biologicals Canada

461 North Service Road West, Unit B37
Oakville, ON L6M 2V5
Canada

Phone: 905.827.6400
Toll Free: 855.668.8722
Fax: 905.827.6402
canada@novusbio.com

Novus Biologicals Europe

19 Barton Lane
Abingdon Science Park
Abingdon, OX14 3NB, United Kingdom

Phone: (44) (0) 1235 529449
Free Phone: 0800 37 34 15
Fax: (44) (0) 1235 533420
info@bio-techne.com

General Contact Information

www.novusbio.com
Technical Support: technical@novusbio.com
Orders: orders@novusbio.com
General: novus@novusbio.com

Limitations

This product is for research use only and is not approved for use in humans or in clinical diagnosis. Primary Antibodies are guaranteed for 1 year from date of receipt.

For more information on our 100% guarantee, please visit www.novusbio.com/guarantee

Earn gift cards/discounts by submitting a review: www.novusbio.com/reviews/submit/NB100-91947

Earn gift cards/discounts by submitting a publication using this product:
www.novusbio.com/publications

