

Product Datasheet

p15INK4b/CDKN2B Antibody

NB100-91906

Unit Size: 0.1 ml

Store at 4C short term. Aliquot and store at -20C long term. Avoid freeze-thaw cycles.

www.novusbio.com



technical@novusbio.com

Publications: 1

Protocols, Publications, Related Products, Reviews, Research Tools and Images at:
www.novusbio.com/NB100-91906

Updated 10/3/2017 v.20.1

Earn rewards for product
reviews and publications.

Submit a publication at www.novusbio.com/publications

Submit a review at www.novusbio.com/reviews/destination/NB100-91906



NB100-91906

p15INK4b/CDKN2B Antibody

Product Information	
Unit Size	0.1 ml
Concentration	1.0 mg/ml
Storage	Store at 4C short term. Aliquot and store at -20C long term. Avoid freeze-thaw cycles.
Clonality	Polyclonal
Preservative	0.05% Sodium Azide
Purity	Immunogen affinity purified
Buffer	PBS (pH 7.2)
Target Molecular Weight	15 kDa
Product Description	
Host	Rabbit
Gene ID	1030
Gene Symbol	CDKN2B
Species	Human, Mouse, Rat
Immunogen	Synthetic peptide, corresponding to amino acids 100-138 of Human p15 INK4b.
Product Application Details	
Applications	Western Blot, Immunocytochemistry/Immunofluorescence, Immunohistochemistry, Immunohistochemistry-Paraffin
Recommended Dilutions	Western Blot 1:500-1:1000, Immunohistochemistry 1:50-1:200, Immunocytochemistry/Immunofluorescence 1:50-1:200, Immunohistochemistry-Paraffin 1:50-1:200

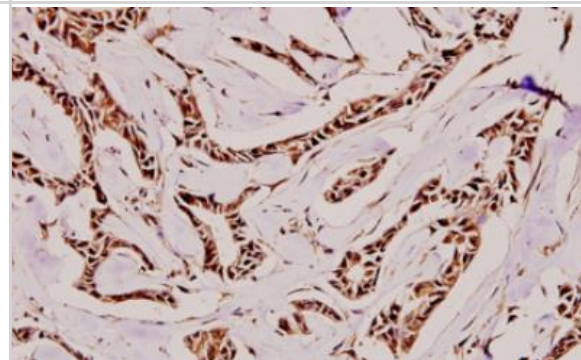


Images

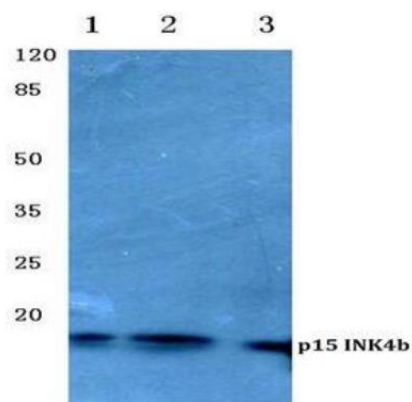
Western Blot: p15INK4b/CDKN2B Antibody [NB100-91906] - p15 INK (G113) antibody in extracts from HeLa cells



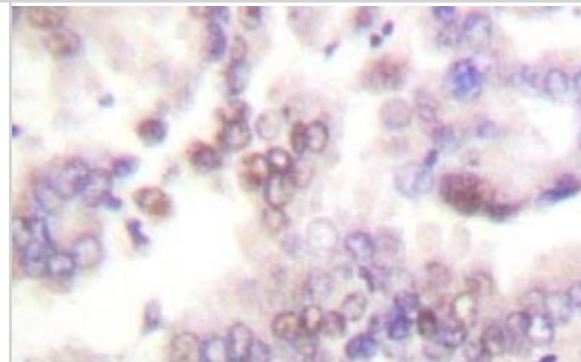
Immunohistochemistry-Paraffin: p15INK4b/CDKN2B Antibody [NB100-91906] - Analyzes of paraffin-embedded human breast carcinoma tissue at 1:100.



Western Blot: p15INK4b/CDKN2B Antibody [NB100-91906] - Lane1: HepG2 whole cell lysate. Lane2: Mouse brain tissue lysate. Lane3: Rat kidney tissue lysate.



Immunohistochemistry: p15INK4b/CDKN2B Antibody [NB100-91906] - p15 INK (G113) antibody in paraffin-embedded human lung carcinoma tissue



Publications

Siddiqi S, Terry M, Matushansky I. Hiwi Mediated Tumorigenesis Is Associated with DNA Hypermethylation PLoS ONE 2012 [PMID: 22438986] (IHC, Human)



Novus Biologicals USA

10730 E. Briarwood Avenue
Centennial, CO 80112
USA

Phone: 303.730.1950
Toll Free: 1.888.506.6887
Fax: 303.730.1966
novus@novusbio.com

Novus Biologicals Canada

461 North Service Road West, Unit B37
Oakville, ON L6M 2V5
Canada

Phone: 905.827.6400
Toll Free: 855.668.8722
Fax: 905.827.6402
canada@novusbio.com

Novus Biologicals Europe

19 Barton Lane
Abingdon Science Park
Abingdon, OX14 3NB, United Kingdom

Phone: (44) (0) 1235 529449
Free Phone: 0800 37 34 15
Fax: (44) (0) 1235 533420
info@bio-techne.com

General Contact Information

www.novusbio.com
Technical Support: technical@novusbio.com
Orders: orders@novusbio.com
General: novus@novusbio.com

Limitations

This product is for research use only and is not approved for use in humans or in clinical diagnosis. Primary Antibodies are guaranteed for 1 year from date of receipt.

For more information on our 100% guarantee, please visit www.novusbio.com/guarantee

Earn gift cards/discounts by submitting a review: www.novusbio.com/reviews/submit/NB100-91906

Earn gift cards/discounts by submitting a publication using this product:
www.novusbio.com/publications

