

# Product Datasheet

## CBP/KAT3A Antibody NB100-91721

Unit Size: 0.1 ml

Store at 4C short term. Aliquot and store at -20C long term. Avoid freeze-thaw cycles.

[www.novusbio.com](http://www.novusbio.com)



[technical@novusbio.com](mailto:technical@novusbio.com)

Protocols, Publications, Related Products, Reviews, Research Tools and Images at:  
[www.novusbio.com/NB100-91721](http://www.novusbio.com/NB100-91721)

Updated 10/3/2017 v.20.1

Earn rewards for product  
reviews and publications.

Submit a publication at [www.novusbio.com/publications](http://www.novusbio.com/publications)

Submit a review at [www.novusbio.com/reviews/destination/NB100-91721](http://www.novusbio.com/reviews/destination/NB100-91721)



**NB100-91721**

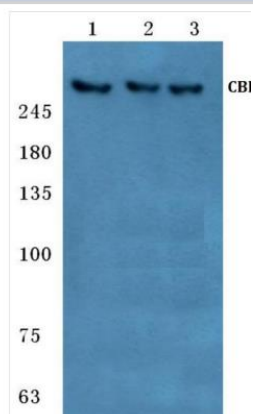
CBP/KAT3A Antibody

Product Information	
Unit Size	0.1 ml
Concentration	1.0 mg/ml
Storage	Store at 4C short term. Aliquot and store at -20C long term. Avoid freeze-thaw cycles.
Clonality	Polyclonal
Preservative	0.05% Sodium Azide
Purity	Immunogen affinity purified
Buffer	PBS (pH 7.2)
Target Molecular Weight	265 kDa
Product Description	
Host	Rabbit
Gene ID	1387
Gene Symbol	CREBBP
Species	Human, Mouse, Rat
Immunogen	Synthetic peptide, corresponding to amino acids 2395-2440 of Human CBP.
Product Application Details	
Applications	Western Blot, Immunocytochemistry/Immunofluorescence, Immunohistochemistry, Immunohistochemistry-Paraffin
Recommended Dilutions	Western Blot 1:500-1:1000, Immunohistochemistry 1:10-1:500, Immunocytochemistry/Immunofluorescence 1:50-1:200, Immunohistochemistry-Paraffin 1:50-1:200
Application Notes	Western blot (WB) analysis of CREBBP (V2427) pAb in extracts from HeLa cell treated with Insulin 0.01U/ml 15'. Immunohistochemistry (IHC) analyzes of CREBBP (V2427) pAb in paraffin-embedded human breast carcinoma tissue.

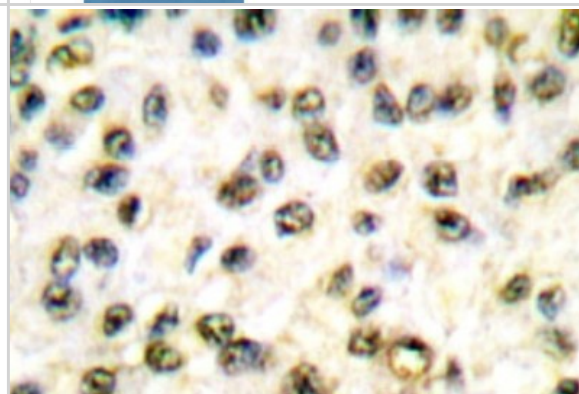


## Images

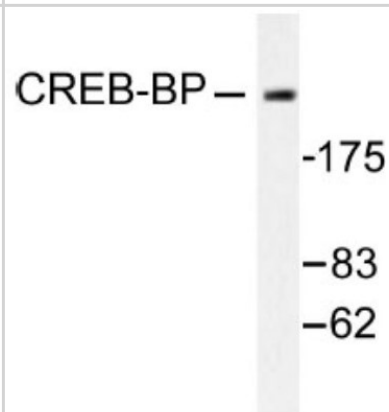
Western Blot: CBP/KAT3A Antibody [NB100-91721] - Analysis of CBP (V2427) pAb at 1:500 dilution Lane1:HeLa cell lysate Lane2:Mouse spleen tissue lysate Lane3:Rat liver tissue lysate



Immunohistochemistry-Paraffin: KAT3A/CBP Antibody [NB100-91721] - Paraffin-embedded human breast carcinoma tissue.



Western Blot: KAT3A/CBP Antibody [NB100-91721] - Extracts from HeLa cell treated with Insulin 0.01U/ml 15'.





### **Novus Biologicals USA**

10730 E. Briarwood Avenue  
Centennial, CO 80112  
USA  
Phone: 303.730.1950  
Toll Free: 1.888.506.6887  
Fax: 303.730.1966  
novus@novusbio.com

### **Novus Biologicals Canada**

461 North Service Road West, Unit B37  
Oakville, ON L6M 2V5  
Canada  
Phone: 905.827.6400  
Toll Free: 855.668.8722  
Fax: 905.827.6402  
canada@novusbio.com

### **Novus Biologicals Europe**

19 Barton Lane  
Abingdon Science Park  
Abingdon, OX14 3NB, United Kingdom  
Phone: (44) (0) 1235 529449  
Free Phone: 0800 37 34 15  
Fax: (44) (0) 1235 533420  
info@bio-techne.com

### **General Contact Information**

www.novusbio.com  
Technical Support: technical@novusbio.com  
Orders: orders@novusbio.com  
General: novus@novusbio.com

### **Limitations**

This product is for research use only and is not approved for use in humans or in clinical diagnosis. Primary Antibodies are guaranteed for 1 year from date of receipt.

For more information on our 100% guarantee, please visit [www.novusbio.com/guarantee](http://www.novusbio.com/guarantee)

Earn gift cards/discounts by submitting a review: [www.novusbio.com/reviews/submit/NB100-91721](http://www.novusbio.com/reviews/submit/NB100-91721)

Earn gift cards/discounts by submitting a publication using this product:  
[www.novusbio.com/publications](http://www.novusbio.com/publications)

