

# Product Datasheet

## eEF-2 Antibody NB100-87020

Unit Size: 0.1 ml

Store at 4C. Do not freeze.

[www.novusbio.com](http://www.novusbio.com)



[technical@novusbio.com](mailto:technical@novusbio.com)

Protocols, Publications, Related Products, Reviews, Research Tools and Images at:  
[www.novusbio.com/NB100-87020](http://www.novusbio.com/NB100-87020)

Updated 10/23/2024 v.20.1

Earn rewards for product  
reviews and publications.

Submit a publication at [www.novusbio.com/publications](http://www.novusbio.com/publications)

Submit a review at [www.novusbio.com/reviews/destination/NB100-87020](http://www.novusbio.com/reviews/destination/NB100-87020)



**NB100-87020**

eEF-2 Antibody

Product Information	
Unit Size	0.1 ml
Concentration	0.2 mg/ml
Storage	Store at 4C. Do not freeze.
Clonality	Polyclonal
Preservative	0.09% Sodium Azide
Isotype	IgG
Purity	Immunogen affinity purified
Buffer	TBS and 0.1% BSA

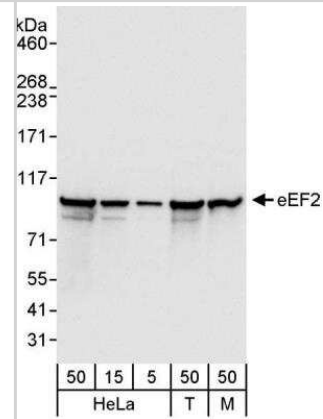
Product Description	
Host	Rabbit
Gene ID	1938
Gene Symbol	EEF2
Species	Human, Mouse
Reactivity Notes	Orangutan (100%).
Immunogen	The immunogen recognized by this antibody maps to a region between residue 808 and 858 of human eukaryotic translation elongation factor 2 using the numbering given in entry NP_001952.1 (GenelD 1938).

Product Application Details	
Applications	Western Blot, Immunohistochemistry, Immunohistochemistry-Paraffin, Immunoprecipitation (Negative)
Recommended Dilutions	Western Blot 1:2000-1:10000, Immunohistochemistry 1:200-1:1000, Immunohistochemistry-Paraffin 1:200-1:1000, Immunoprecipitation (Negative)
Application Notes	This antibody is not recommended for immunoprecipitation.

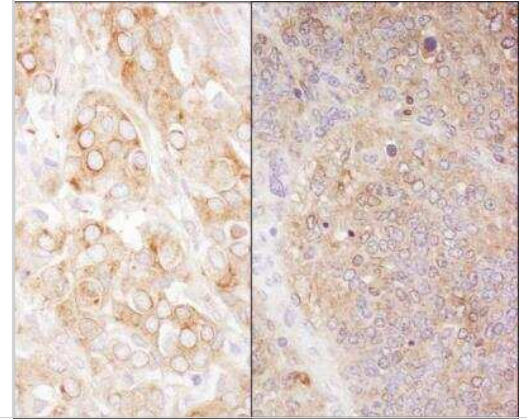


## Images

Western Blot: eEF-2 Antibody [NB100-87020] - Whole cell lysate from HeLa (5, 15 and 50 ug), 293T (T; 50 ug), and mouse NIH3T3 (M; 50 ug) cells. Antibody used at 0.04 ug/ml.



Immunohistochemistry-Paraffin: eEF-2 Antibody [NB100-87020] - Section of human breast carcinoma (left) and mouse teratoma (right). Antibody: Affinity purified rabbit anti-eEF2 used at a dilution of 1:1,000 (0.2ug/ml). Detection: DAB





### **Novus Biologicals USA**

10730 E. Briarwood Avenue  
Centennial, CO 80112  
USA  
Phone: 303.730.1950  
Toll Free: 1.888.506.6887  
Fax: 303.730.1966  
nb-customerservice@bio-techne.com

### **Bio-Techne Canada**

21 Canmotor Ave  
Toronto, ON M8Z 4E6  
Canada  
Phone: 905.827.6400  
Toll Free: 855.668.8722  
Fax: 905.827.6402  
canada.inquires@bio-techne.com

### **Bio-Techne Ltd**

19 Barton Lane  
Abingdon Science Park  
Abingdon, OX14 3NB, United Kingdom  
Phone: (44) (0) 1235 529449  
Free Phone: 0800 37 34 15  
Fax: (44) (0) 1235 533420  
info.EMEA@bio-techne.com

### **General Contact Information**

[www.novusbio.com](http://www.novusbio.com)  
Technical Support: nb-technical@bio-techne.com  
Orders: nb-customerservice@bio-techne.com  
General: novus@novusbio.com

### **Products Related to NB100-87020**

HAF008	Goat anti-Rabbit IgG Secondary Antibody [HRP]
NB7160	Goat anti-Rabbit IgG (H+L) Secondary Antibody [HRP]
NBP2-24891	Rabbit IgG Isotype Control
NBP2-51776-0.1mg	Recombinant Human eEF-2 His Protein

### **Limitations**

This product is for research use only and is not approved for use in humans or in clinical diagnosis. Primary Antibodies are guaranteed for 1 year from date of receipt.

For more information on our 100% guarantee, please visit [www.novusbio.com/guarantee](http://www.novusbio.com/guarantee)

Earn gift cards/discounts by submitting a review: [www.novusbio.com/reviews/submit/NB100-87020](http://www.novusbio.com/reviews/submit/NB100-87020)

Earn gift cards/discounts by submitting a publication using this product:  
[www.novusbio.com/publications](http://www.novusbio.com/publications)

