

Product Datasheet

RelA/NFkB p65 [p Ser311] Antibody NB100-82080

Unit Size: 0.05 ml

Store at 4C short term. Aliquot and store at -20C long term. Avoid freeze-thaw cycles.

www.novusbio.com



technical@novusbio.com

Protocols, Publications, Related Products, Reviews, Research Tools and Images at:
www.novusbio.com/NB100-82080

Updated 5/28/2019 v.20.1

Earn rewards for product
reviews and publications.

Submit a publication at www.novusbio.com/publications

Submit a review at www.novusbio.com/reviews/destination/NB100-82080



NB100-82080

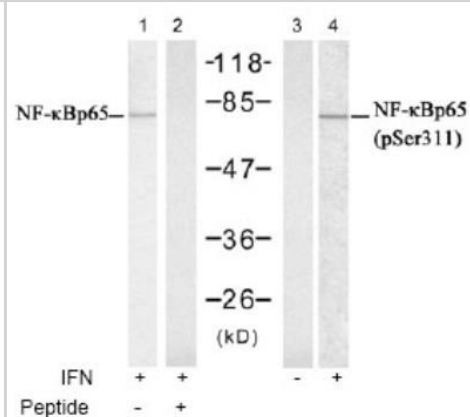
RelA/NFkB p65 [p Ser311] Antibody

Product Information	
Unit Size	0.05 ml
Concentration	1.0 mg/ml
Storage	Store at 4C short term. Aliquot and store at -20C long term. Avoid freeze-thaw cycles.
Clonality	Polyclonal
Preservative	0.02% Sodium Azide
Purity	Immunogen affinity purified
Buffer	PBS [pH 7.4] 150mM NaCl and 50% glycerol (without Mg ²⁺ and Ca ²⁺)
Target Molecular Weight	65 kDa
Product Description	
Host	Rabbit
Gene ID	5970
Gene Symbol	RELA
Species	Human, Mouse, Rat
Specificity/Sensitivity	NFkB-p65 (specific to Phospho-Ser311) detects endogenous levels of NFkB-p65 only when phosphorylated at serine 311.
Immunogen	The antiserum was produced against synthesized phosphopeptide derived from human NFkB-p65 around the phosphorylation site of serine 311 (F-K-SP-I-M).
Product Application Details	
Applications	Western Blot, Immunocytochemistry/Immunofluorescence, Immunohistochemistry, Immunohistochemistry-Paraffin
Recommended Dilutions	Western Blot 1:500-1:1000, Immunohistochemistry 1:50-1:100, Immunocytochemistry/Immunofluorescence 1:100-1:200, Immunohistochemistry-Paraffin 1:50-1:100
Application Notes	This antibody is useful for Western Blot 1:500-1:1000 and Immunohistochemistry 1:50-1:100. Optimal dilution should be determined by end user.

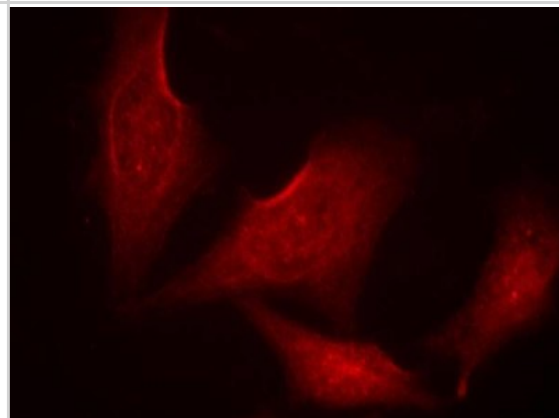


Images

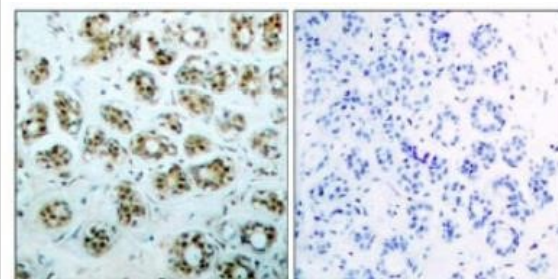
Western Blot: NFkB p65 [p Ser311] Antibody [NB100-82080] - Analysis of extract from Hela cells untreated or treated with IFN, using NFkB-p65 (Ab-311) antibody (Lane 1 and 2) and NFkB-p65 (phospho-Ser311) antibody (Lane 3 and 4).



Immunocytochemistry/Immunofluorescence: NFkB p65 [p Ser311] Antibody [NB100-82080] - Staining of methanol-fixed HeLa cells using NFkB-p65 (phospho-Ser311) antibody.



Immunohistochemistry-Paraffin: NFkB p65 [p Ser311] Antibody [NB100-82080] - Immunohistochemical analysis of paraffin-embedded human breast carcinoma tissue, using NFkB-p65 (phospho-Ser311) antibody.



P-Peptide - +



Novus Biologicals USA

10730 E. Briarwood Avenue
Centennial, CO 80112
USA

Phone: 303.730.1950
Toll Free: 1.888.506.6887
Fax: 303.730.1966
novus@novusbio.com

Novus Biologicals Canada

461 North Service Road West, Unit B37
Oakville, ON L6M 2V5
Canada

Phone: 905.827.6400
Toll Free: 855.668.8722
Fax: 905.827.6402
canada@novusbio.com

Novus Biologicals Europe

19 Barton Lane
Abingdon Science Park
Abingdon, OX14 3NB, United Kingdom

Phone: (44) (0) 1235 529449
Free Phone: 0800 37 34 15
Fax: (44) (0) 1235 533420
info@bio-techne.com

General Contact Information

www.novusbio.com
Technical Support: technical@novusbio.com
Orders: orders@novusbio.com
General: novus@novusbio.com

Limitations

This product is for research use only and is not approved for use in humans or in clinical diagnosis. Primary Antibodies are guaranteed for 1 year from date of receipt.

For more information on our 100% guarantee, please visit www.novusbio.com/guarantee

Earn gift cards/discounts by submitting a review: www.novusbio.com/reviews/submit/NB100-82080

Earn gift cards/discounts by submitting a publication using this product:
www.novusbio.com/publications

