

Product Datasheet

Connexin 43/GJA1 [p Ser367] Antibody NB100-81868

Unit Size: 0.05 mg

Store at 4C short term. Aliquot and store at -20C long term. Avoid freeze-thaw cycles.

www.novusbio.com



technical@novusbio.com

Protocols, Publications, Related Products, Reviews, Research Tools and Images at:
www.novusbio.com/NB100-81868

Updated 10/3/2017 v.20.1

Earn rewards for product
reviews and publications.

Submit a publication at www.novusbio.com/publications

Submit a review at www.novusbio.com/reviews/destination/NB100-81868



NB100-81868

Connexin 43/GJA1 [p Ser367] Antibody

Product Information	
Unit Size	0.05 mg
Concentration	1.0 mg/ml
Storage	Store at 4C short term. Aliquot and store at -20C long term. Avoid freeze-thaw cycles.
Clonality	Polyclonal
Preservative	0.02% Sodium Azide
Purity	Immunogen affinity purified
Buffer	PBS (without Mg ²⁺ and Ca ²⁺ , pH 7.4), 0.15M NaCl and 50% Glycerol
Target Molecular Weight	43 kDa

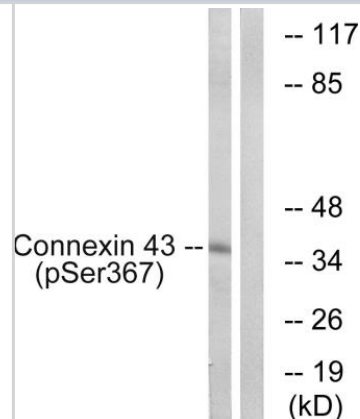
Product Description	
Host	Rabbit
Gene ID	2697
Gene Symbol	GJA1
Species	Human, Mouse, Rat
Reactivity Notes	This antibody is reactive against Human, Mouse, Rat
Marker	Gap Junctions Marker
Specificity/Sensitivity	Connexin43 (specific to Phospho-Ser367) detects endogenous levels of Connexin43 only when phosphorylated at serine 367.
Immunogen	The antiserum was produced against synthesized phosphopeptide derived from human Connexin43 around the phosphorylation site of serine 367 (R-A-S-S-R).

Product Application Details	
Applications	Western Blot, ELISA, Immunohistochemistry, Immunohistochemistry-Paraffin
Recommended Dilutions	Western Blot 1:500-1:1000, ELISA 1:20000, Immunohistochemistry 1:50-1:100, Immunohistochemistry-Paraffin 1:50-1:100

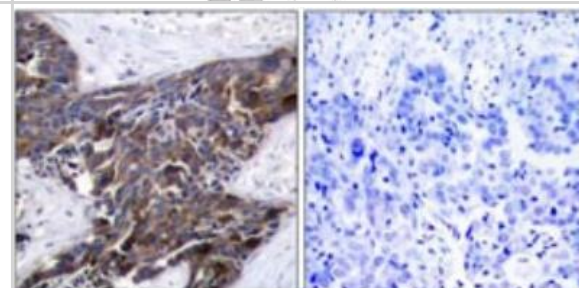


Images

Western Blot: Connexin 43/GJA1 [p Ser368] Antibody [NB100-81868] - Western blot analysis of lysates from K562 cells treated with PMA 200ng/ml 10'. The lane on the right is blocked with the phospho peptide.

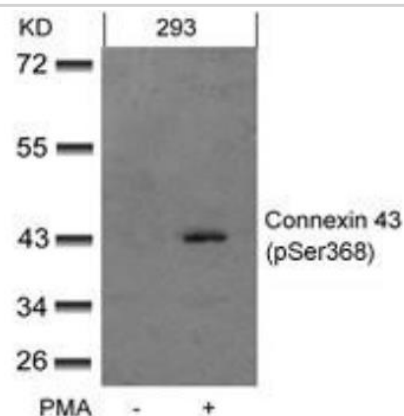


Immunohistochemistry-Paraffin: Connexin 43/GJA1 [p Ser368] Antibody [NB100-81868] - Immunohistochemical analysis of Connexin43 (p Ser368) in paraffin-embedded human breast carcinoma tissue using NB100-81868.

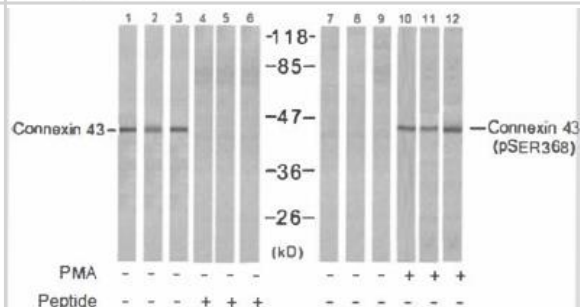


P-Peptide - - +

Western Blot: Connexin 43/GJA1 [p Ser368] Antibody [NB100-81868] - Analysis of extracts from 293 cells untreated or treated with PMA using Connexin 43(phospho-Ser368) antibody



Connexin 43/GJA1 [p Ser368] Antibody [NB100-81868] - Analysis of extracts from HeLa (Lanes 1, 4, 7 and 10), K562 (Lanes 2, 5, 8 and 11) and 293 (Lanes 3, 6, 9 and 12) cells, untreated or treated with PMA (1nM 30min), using Connexin43 antibody (Lanes 1, 2, 3, 4, 5 and 6) and Connexin43 (phospho-Ser368) antibody (Lanes 7, 8, 9, 10, 11 and 12).



**Novus Biologicals USA**

10730 E. Briarwood Avenue
Centennial, CO 80112
USA

Phone: 303.730.1950
Toll Free: 1.888.506.6887
Fax: 303.730.1966
novus@novusbio.com

Novus Biologicals Canada

461 North Service Road West, Unit B37
Oakville, ON L6M 2V5
Canada

Phone: 905.827.6400
Toll Free: 855.668.8722
Fax: 905.827.6402
canada@novusbio.com

Novus Biologicals Europe

19 Barton Lane
Abingdon Science Park
Abingdon, OX14 3NB, United Kingdom
Phone: (44) (0) 1235 529449
Free Phone: 0800 37 34 15
Fax: (44) (0) 1235 533420
info@bio-techne.com

General Contact Information

www.novusbio.com
Technical Support: technical@novusbio.com
Orders: orders@novusbio.com
General: novus@novusbio.com

Limitations

This product is for research use only and is not approved for use in humans or in clinical diagnosis. Primary Antibodies are guaranteed for 1 year from date of receipt.

For more information on our 100% guarantee, please visit www.novusbio.com/guarantee

Earn gift cards/discounts by submitting a review: www.novusbio.com/reviews/submit/NB100-81868

Earn gift cards/discounts by submitting a publication using this product:
www.novusbio.com/publications

