

Product Datasheet

CDC25C [p Ser216] Antibody - BSA Free NB100-81841

Unit Size: 0.05 ml

Store at 4C short term. Aliquot and store at -20C long term. Avoid freeze-thaw cycles.

www.novusbio.com



technical@novusbio.com

Protocols, Publications, Related Products, Reviews, Research Tools and Images at:
www.novusbio.com/NB100-81841

Updated 2/21/2025 v.20.1

Earn rewards for product
reviews and publications.

Submit a publication at www.novusbio.com/publications

Submit a review at www.novusbio.com/reviews/destination/NB100-81841



NB100-81841

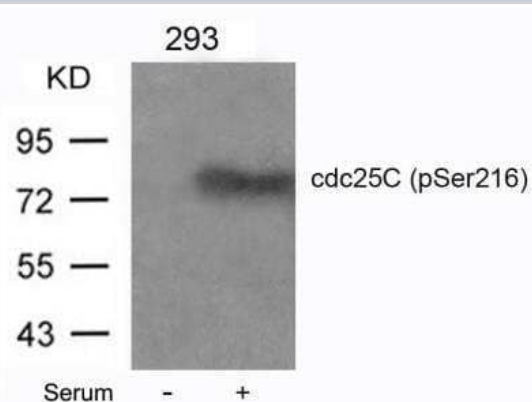
CDC25C [p Ser216] Antibody - BSA Free

Product Information	
Unit Size	0.05 ml
Concentration	1.0 mg/ml
Storage	Store at 4C short term. Aliquot and store at -20C long term. Avoid freeze-thaw cycles.
Clonality	Polyclonal
Preservative	0.02% Sodium Azide
Isotype	IgG
Purity	Immunogen affinity purified
Buffer	PBS (without Mg ²⁺ and Ca ²⁺), pH 7.4, 150 mM NaCl, 50% glycerol
Target Molecular Weight	53 kDa
Product Description	
Host	Rabbit
Gene ID	995
Gene Symbol	CDC25C
Species	Human
Marker	Mitosis Marker
Specificity/Sensitivity	Detects endogenous levels of CDC25C only when phosphorylated at serine 216.
Immunogen	The antiserum was produced against synthesized phosphopeptide derived from human CDC25C around the phosphorylation site of serine 216 (S-P-SP-M-P).
Product Application Details	
Applications	Western Blot, Immunocytochemistry/ Immunofluorescence, Immunohistochemistry, Immunohistochemistry-Paraffin
Recommended Dilutions	Western Blot 1:500-1:1000, Immunohistochemistry 1:50-1:100, Immunocytochemistry/ Immunofluorescence 1:100-1:200, Immunohistochemistry-Paraffin 1:50-1:100

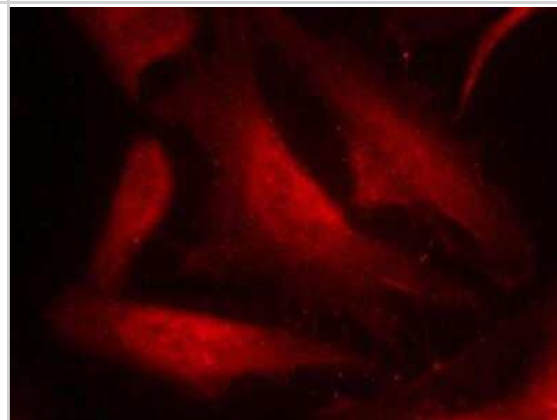


Images

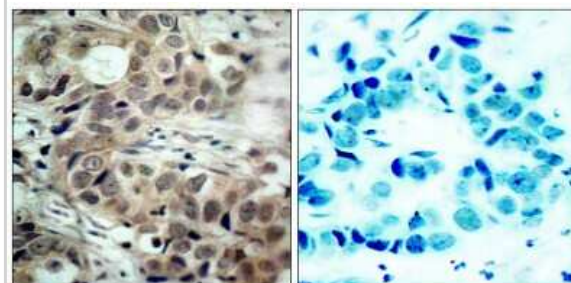
Western Blot: CDC25C [p Ser216] Antibody [NB100-81841] - Analysis of extracts from 293 cells untreated or treated with serum using CDC25C [p Ser216] Antibody.



Immunocytochemistry/Immunofluorescence: CDC25C [p Ser216] Antibody [NB100-81841] - Staining of methanol-fixed Hela cells using CDC25C [p Ser216] Antibody.



Immunohistochemistry-Paraffin: CDC25C [p Ser216] Antibody [NB100-81841] - Immunohistochemical analysis of paraffin-embedded human breast carcinoma tissue using NB100-81841 (left) or the same antibody preincubated with blocking peptide (right).





Novus Biologicals USA

10730 E. Briarwood Avenue
Centennial, CO 80112
USA
Phone: 303.730.1950
Toll Free: 1.888.506.6887
Fax: 303.730.1966
nb-customerservice@bio-techne.com

Bio-Techne Canada

21 Canmotor Ave
Toronto, ON M8Z 4E6
Canada
Phone: 905.827.6400
Toll Free: 855.668.8722
Fax: 905.827.6402
canada.inquires@bio-techne.com

Bio-Techne Ltd

19 Barton Lane
Abingdon Science Park
Abingdon, OX14 3NB, United Kingdom
Phone: (44) (0) 1235 529449
Free Phone: 0800 37 34 15
Fax: (44) (0) 1235 533420
info.EMEA@bio-techne.com

General Contact Information

www.novusbio.com
Technical Support: nb-technical@bio-techne.com
Orders: nb-customerservice@bio-techne.com
General: novus@novusbio.com

Products Related to NB100-81841

NBL1-08996	CDC25C Overexpression Lysate
HAF008	Goat anti-Rabbit IgG Secondary Antibody [HRP]
NB7160	Goat anti-Rabbit IgG (H+L) Secondary Antibody [HRP]
NBP2-24891	Rabbit IgG Isotype Control

Limitations

This product is for research use only and is not approved for use in humans or in clinical diagnosis. Primary Antibodies are guaranteed for 1 year from date of receipt.

For more information on our 100% guarantee, please visit www.novusbio.com/guarantee

Earn gift cards/discounts by submitting a review: www.novusbio.com/reviews/submit/NB100-81841

Earn gift cards/discounts by submitting a publication using this product:
www.novusbio.com/publications

