

Product Datasheet

Bcl-2 [p Thr56] Antibody NB100-81812

Unit Size: 0.05 mg

Store at -20C. Avoid freeze-thaw cycles.

www.novusbio.com



technical@novusbio.com

Protocols, Publications, Related Products, Reviews, Research Tools and Images at:
www.novusbio.com/NB100-81812

Updated 3/11/2019 v.20.1

Earn rewards for product
reviews and publications.

Submit a publication at www.novusbio.com/publications

Submit a review at www.novusbio.com/reviews/destination/NB100-81812



NB100-81812

Bcl-2 [p Thr56] Antibody

| Product Information | |
|--------------------------------|---|
| Unit Size | 0.05 mg |
| Concentration | 1.0 mg/ml |
| Storage | Store at -20C. Avoid freeze-thaw cycles. |
| Clonality | Polyclonal |
| Preservative | 0.02% Sodium Azide |
| Purity | Immunogen affinity purified |
| Buffer | phosphate buffered saline (without Mg ²⁺ and Ca ²⁺), pH 7.4, 150mM NaCl, and 50% glycerol. |
| Target Molecular Weight | 26 kDa |

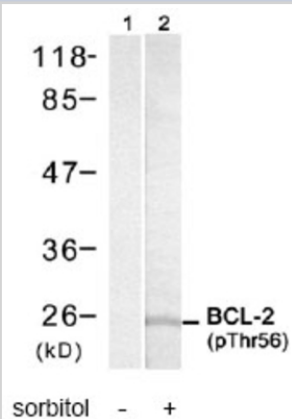
| Product Description | |
|--------------------------------|--|
| Host | Rabbit |
| Gene ID | 596 |
| Gene Symbol | BCL2 |
| Species | Human |
| Reactivity Notes | Human. |
| Specificity/Sensitivity | BCL-2 (specific to Phospho-Thr56) detects endogenous levels of BCL-2 only when phosphorylated at threonine 56. |
| Immunogen | The antiserum was produced against synthesized phosphopeptide derived from human BCL-2 around the phosphorylation site of threonine 56 (G-H-TP-P-H). |

| Product Application Details | |
|------------------------------------|---|
| Applications | Western Blot, Immunohistochemistry, Immunohistochemistry-Paraffin |
| Recommended Dilutions | Western Blot 1:500-1:1000, Immunohistochemistry 1:50-1:100, Immunohistochemistry-Paraffin |

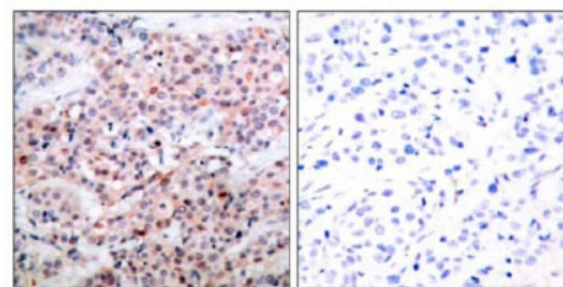


Images

Western Blot: BCL-2 Phosphospecific Antibody [NB100-81812] -
Western blot analysis of extracts from MDA435 cells treated with sorbitol
(0.4M, 30min) using BCL-2 (phospho-Thr56) antibody



Immunohistochemistry: BCL-2 Phosphospecific Antibody [NB100-81812] -
Immunohistochemical analysis of paraffin-embedded human breast carcinoma tissue, using BCL-2 (phospho-Thr56) antibody NB100-81812



P-Peptide - +



Novus Biologicals USA

10730 E. Briarwood Avenue
Centennial, CO 80112
USA

Phone: 303.730.1950
Toll Free: 1.888.506.6887
Fax: 303.730.1966
novus@novusbio.com

Novus Biologicals Canada

461 North Service Road West, Unit B37
Oakville, ON L6M 2V5
Canada

Phone: 905.827.6400
Toll Free: 855.668.8722
Fax: 905.827.6402
canada@novusbio.com

Novus Biologicals Europe

19 Barton Lane
Abingdon Science Park
Abingdon, OX14 3NB, United Kingdom

Phone: (44) (0) 1235 529449
Free Phone: 0800 37 34 15
Fax: (44) (0) 1235 533420
info@bio-techne.com

General Contact Information

www.novusbio.com
Technical Support: technical@novusbio.com
Orders: orders@novusbio.com
General: novus@novusbio.com

Limitations

This product is for research use only and is not approved for use in humans or in clinical diagnosis. Primary Antibodies are guaranteed for 1 year from date of receipt.

For more information on our 100% guarantee, please visit www.novusbio.com/guarantee

Earn gift cards/discounts by submitting a review: www.novusbio.com/reviews/submit/NB100-81812

Earn gift cards/discounts by submitting a publication using this product:
www.novusbio.com/publications

