

# Product Datasheet

## 14-3-3 sigma/Stratifin Antibody NB100-81672

Unit Size: 100 ul

Store at 4C. Do not freeze.

[www.novusbio.com](http://www.novusbio.com)



[technical@novusbio.com](mailto:technical@novusbio.com)

Protocols, Publications, Related Products, Reviews, Research Tools and Images at:  
[www.novusbio.com/NB100-81672](http://www.novusbio.com/NB100-81672)

Updated 2/1/2019 v.20.1

Earn rewards for product  
reviews and publications.

Submit a publication at [www.novusbio.com/publications](http://www.novusbio.com/publications)

Submit a review at [www.novusbio.com/reviews/destination/NB100-81672](http://www.novusbio.com/reviews/destination/NB100-81672)



**NB100-81672**

14-3-3 sigma/Stratifin Antibody

<b>Product Information</b>	
<b>Unit Size</b>	100 ul
<b>Concentration</b>	1.0 mg/ml
<b>Storage</b>	Store at 4C. Do not freeze.
<b>Clonality</b>	Polyclonal
<b>Preservative</b>	0.09% Sodium Azide
<b>Isotype</b>	IgG
<b>Purity</b>	Immunogen affinity purified
<b>Buffer</b>	Tris-Citrate/Phosphate (pH 7.0 - 8.0)

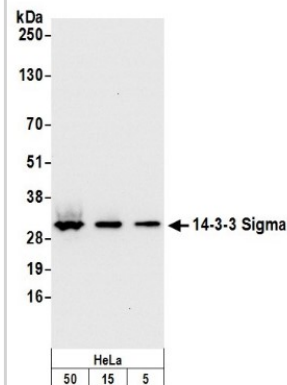
<b>Product Description</b>	
<b>Host</b>	Rabbit
<b>Gene ID</b>	2810
<b>Gene Symbol</b>	SFN
<b>Species</b>	Human
<b>Immunogen</b>	The immunogen recognized by this antibody maps to a region between residue 198 and 248 of human 14-3-3 sigma/Stratifin using the numbering given in entry NP_006133.1 (GeneID 2810).

<b>Product Application Details</b>	
<b>Applications</b>	Western Blot, Immunohistochemistry, Immunoprecipitation
<b>Recommended Dilutions</b>	Western Blot 1:2000-1:10000, Immunohistochemistry, Immunoprecipitation 2-5 ug/mg lysate

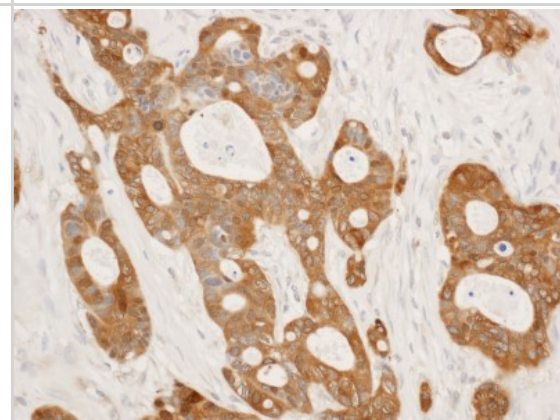


## Images

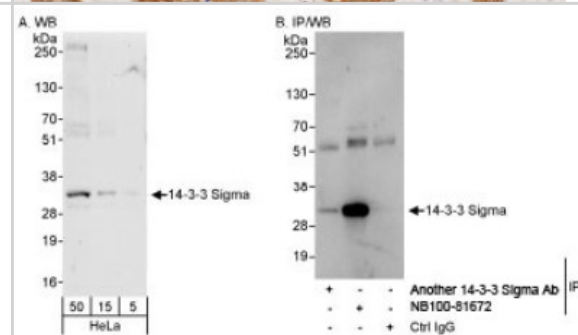
**Western Blot: 14-3-3 sigma/Stratifin Antibody [NB100-81672] - Detection of Human 14-3-3 Sigma by Western Blot.** Samples: Whole cell lysate (5, 15 and 50 ug) from HeLa cells prepared using NETN lysis buffer. Antibody: Affinity purified rabbit anti-14-3-3 Sigma antibody NB100-81672 used for WB at 0.1 ug/ml. Detection: Chemiluminescence with an exposure time of 10 seconds.



**Immunohistochemistry: 14-3-3 sigma/Stratifin Antibody [NB100-81672] - Sample: FFPE section of human ovarian carcinoma.** Antibody: Affinity purified rabbit anti- 14-3-3 Sigma used at a dilution of 1:1,000 (1ug/ml). Detection: DAB



**Immunoprecipitation: 14-3-3 sigma/Stratifin Antibody [NB100-81672] - Detection of Human 14-3-3 Sigma on HeLa whole cell lysate using NB100-81672.** 14-3-3 sigma/Stratifin was also immunoprecipitated by another rabbit anti-14-3-3 sigma/Stratifin antibody.





### **Novus Biologicals USA**

10730 E. Briarwood Avenue  
Centennial, CO 80112  
USA

Phone: 303.730.1950  
Toll Free: 1.888.506.6887  
Fax: 303.730.1966  
novus@novusbio.com

### **Novus Biologicals Canada**

461 North Service Road West, Unit B37  
Oakville, ON L6M 2V5  
Canada

Phone: 905.827.6400  
Toll Free: 855.668.8722  
Fax: 905.827.6402  
canada@novusbio.com

### **Novus Biologicals Europe**

19 Barton Lane  
Abingdon Science Park  
Abingdon, OX14 3NB, United Kingdom

Phone: (44) (0) 1235 529449  
Free Phone: 0800 37 34 15  
Fax: (44) (0) 1235 533420  
info@bio-techne.com

### **General Contact Information**

www.novusbio.com  
Technical Support: technical@novusbio.com  
Orders: orders@novusbio.com  
General: novus@novusbio.com

### **Limitations**

This product is for research use only and is not approved for use in humans or in clinical diagnosis. Primary Antibodies are guaranteed for 1 year from date of receipt.

For more information on our 100% guarantee, please visit [www.novusbio.com/guarantee](http://www.novusbio.com/guarantee)

Earn gift cards/discounts by submitting a review: [www.novusbio.com/reviews/submit/NB100-81672](http://www.novusbio.com/reviews/submit/NB100-81672)

Earn gift cards/discounts by submitting a publication using this product:  
[www.novusbio.com/publications](http://www.novusbio.com/publications)

