

Product Datasheet

Rif1 Antibody NB100-80875

Unit Size: 0.05 mg

Store at -20C. Avoid freeze-thaw cycles.

www.novusbio.com



technical@novusbio.com

Protocols, Publications, Related Products, Reviews, Research Tools and Images at:
www.novusbio.com/NB100-80875

Updated 2/24/2022 v.20.1

Earn rewards for product
reviews and publications.

Submit a publication at www.novusbio.com/publications

Submit a review at www.novusbio.com/reviews/destination/NB100-80875



NB100-80875

Rif1 Antibody

Product Information	
Unit Size	0.05 mg
Concentration	1.0 mg/ml
Storage	Store at -20C. Avoid freeze-thaw cycles.
Clonality	Polyclonal
Preservative	0.01% Sodium Azide
Isotype	IgG
Purity	Immunogen affinity purified
Buffer	20mM Potassium Phosphate (pH 7.2) and 0.15M NaCl

Product Description	
Host	Rabbit
Gene ID	55183
Gene Symbol	RIF1
Species	Human, Mouse
Specificity/Sensitivity	Databases confirm that the immunogen sequence represents the C-terminal end of mouse Rif1 (534 aa 58.1 kDa), mouse telomere-associated protein RIF1 (2418 aa 265.7 kDa) and mouse Rap1-interacting factor 1 (2426 267.1 kDa).
Immunogen	Synthetic peptide corresponding to C-Terminal region near aa 2375-2419 of Mouse Rif1.

Product Application Details	
Applications	Western Blot, ELISA, Immunohistochemistry, Immunohistochemistry-Paraffin
Recommended Dilutions	Western Blot 1:500 - 1:3000, ELISA 1:5000 - 1:40000, Immunohistochemistry 5 ug/ml, Immunohistochemistry-Paraffin 5 ug/ml

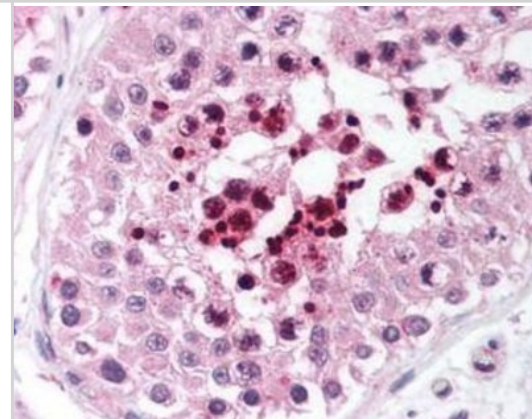


Images

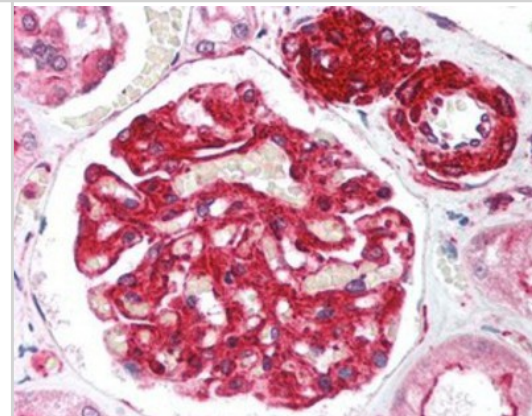
Western Blot: Rif1 Antibody [NB100-80875] - Affinity Purified anti-Rif1 antibody shows detection of a band ~265 kD corresponding to mouse Rif1 (arrowhead). Specific reactivity with this band is blocked when the antibody is pre-incubated with the immunizing peptide (data not shown). Approximately 25 ug of MEF whole cell lysate was separated by SDS-PAGE and transferred onto nitrocellulose. After blocking the membrane was probed with the primary antibody diluted to 1.0 ug/ml for 2 h at room temperature followed by washes and reaction with a 1:10000 dilution of IRDye800 conjugated Gt-a-Rabbit IgG [H&L] MX (for 45 min at room temperature. IRDye800 fluorescence image was captured using the Odyssey Infrared Imaging System developed by LI-COR. IRDye is a trademark of LI-COR, Inc. Other detection systems will yield similar results.



Immunohistochemistry-Paraffin: Rif1 Antibody [NB100-80875] - Staining of human testis. Immunohistochemistry of formalin-fixed, paraffin-embedded tissue after heat-induced antigen retrieval. Antibody concentration 5 ug/ml.



Immunohistochemistry-Paraffin: Rif1 Antibody [NB100-80875] - Staining of human kidney. Immunohistochemistry of formalin-fixed, paraffin-embedded tissue after heat-induced antigen retrieval. Antibody concentration 5 ug/ml.





Novus Biologicals USA

10730 E. Briarwood Avenue
Centennial, CO 80112
USA

Phone: 303.730.1950
Toll Free: 1.888.506.6887
Fax: 303.730.1966
novus@novusbio.com

Bio-Techne Canada

21 Canmotor Ave
Toronto, ON M8Z 4E6
Canada

Phone: 905.827.6400
Toll Free: 855.668.8722
Fax: 905.827.6402
canada.inquires@bio-techne.com

Bio-Techne Ltd

19 Barton Lane
Abingdon Science Park
Abingdon, OX14 3NB, United Kingdom

Phone: (44) (0) 1235 529449
Free Phone: 0800 37 34 15
Fax: (44) (0) 1235 533420
info.EMEA@bio-techne.com

General Contact Information

www.novusbio.com
Technical Support: technical@novusbio.com
Orders: orders@novusbio.com
General: novus@novusbio.com

Limitations

This product is for research use only and is not approved for use in humans or in clinical diagnosis. Primary Antibodies are guaranteed for 1 year from date of receipt.

For more information on our 100% guarantee, please visit www.novusbio.com/guarantee

Earn gift cards/discounts by submitting a review: www.novusbio.com/reviews/submit/NB100-80875

Earn gift cards/discounts by submitting a publication using this product:
www.novusbio.com/publications

