

Product Datasheet

STEAP2 Antibody NB100-80829

Unit Size: 0.05 mg

Store at 4C short term. Aliquot and store at -20C long term. Avoid freeze-thaw cycles.

www.novusbio.com



technical@novusbio.com

Protocols, Publications, Related Products, Reviews, Research Tools and Images at:
www.novusbio.com/NB100-80829

Updated 1/26/2022 v.20.1

Earn rewards for product
reviews and publications.

Submit a publication at www.novusbio.com/publications

Submit a review at www.novusbio.com/reviews/destination/NB100-80829



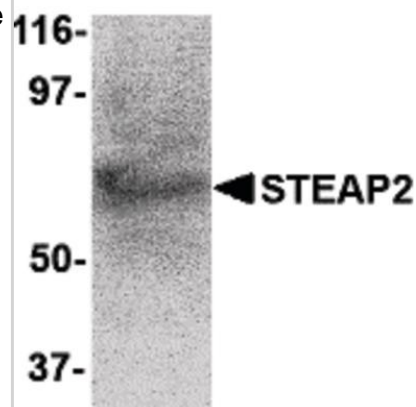
NB100-80829**STEAP2 Antibody**

Product Information	
Unit Size	0.05 mg
Concentration	1.0 mg/ml
Storage	Store at 4C short term. Aliquot and store at -20C long term. Avoid freeze-thaw cycles.
Clonality	Polyclonal
Preservative	0.02% Sodium Azide
Isotype	IgG
Purity	Peptide affinity purified
Buffer	PBS
Product Description	
Host	Rabbit
Gene ID	261729
Gene Symbol	STEAP2
Species	Human, Mouse
Specificity/Sensitivity	This STEAP2 antibody does not cross-react with other STEAP proteins.
Immunogen	A 16 amino acid synthetic peptide near the C-terminus of human STEAP2. The immunogen is located within the last 50 amino acids of STEAP2.
Product Application Details	
Applications	Western Blot, ELISA, Immunocytochemistry/Immunofluorescence, Immunohistochemistry, Immunohistochemistry-Paraffin
Recommended Dilutions	Western Blot 1 ug/ml, ELISA, Immunohistochemistry 10 ug/ml, Immunocytochemistry/Immunofluorescence 1:10-1:500, Immunohistochemistry-Paraffin 10 ug/ml

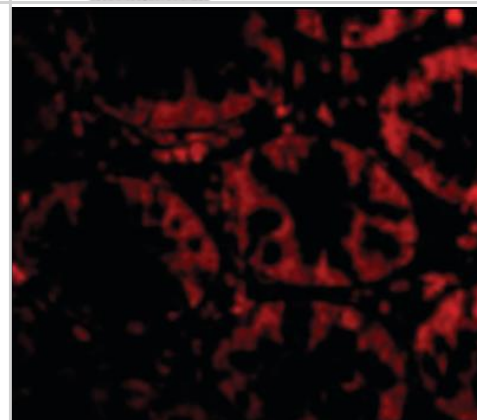


Images

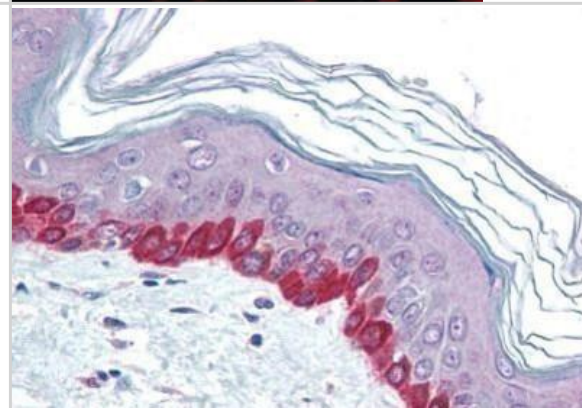
Western Blot: STEAP2 Antibody [NB100-80829] - Human prostate tissue lysate with STEAP2 antibody at 1 ug/ml.



Immunocytochemistry/Immunofluorescence: STEAP2 Antibody [NB100-80829] - Human Colon cells with STEAP2 antibody at 20 ug/ml.



Immunohistochemistry-Paraffin: STEAP2 Antibody [NB100-80829] - Staining of human skin tissue after heat-induced antigen retrieval. Antibody concentration 10 ug/ml.





Novus Biologicals USA

10730 E. Briarwood Avenue
Centennial, CO 80112
USA

Phone: 303.730.1950
Toll Free: 1.888.506.6887
Fax: 303.730.1966
novus@novusbio.com

Bio-Techne Canada

21 Canmotor Ave
Toronto, ON M8Z 4E6
Canada

Phone: 905.827.6400
Toll Free: 855.668.8722
Fax: 905.827.6402
canada.inquires@bio-techne.com

Bio-Techne Ltd

19 Barton Lane
Abingdon Science Park
Abingdon, OX14 3NB, United Kingdom
Phone: (44) (0) 1235 529449
Free Phone: 0800 37 34 15
Fax: (44) (0) 1235 533420
info.EMEA@bio-techne.com

General Contact Information

www.novusbio.com
Technical Support: technical@novusbio.com
Orders: orders@novusbio.com
General: novus@novusbio.com

Limitations

This product is for research use only and is not approved for use in humans or in clinical diagnosis. Primary Antibodies are guaranteed for 1 year from date of receipt.

For more information on our 100% guarantee, please visit www.novusbio.com/guarantee

Earn gift cards/discounts by submitting a review: www.novusbio.com/reviews/submit/NB100-80829

Earn gift cards/discounts by submitting a publication using this product:
www.novusbio.com/publications

