

Product Datasheet

RNA Polymerase II/POLR2A [p Ser1801] Antibody (EP1510Y) NB100-80032

Unit Size: 0.1 ml

Store at -20C. Avoid freeze-thaw cycles.

www.novusbio.com



technical@novusbio.com

Protocols, Publications, Related Products, Reviews, Research Tools and Images at:
www.novusbio.com/NB100-80032

Updated 6/27/2018 v.20.1

Earn rewards for product
reviews and publications.

Submit a publication at www.novusbio.com/publications

Submit a review at www.novusbio.com/reviews/destination/NB100-80032

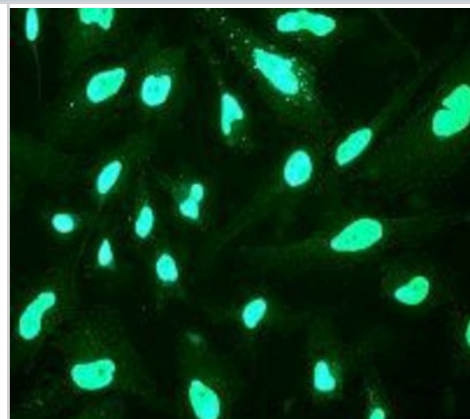


NB100-80032**RNA Polymerase II/POLR2A [p Ser1801] Antibody (EP1510Y)**

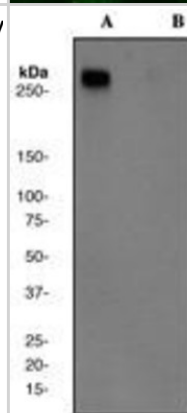
Product Information	
Unit Size	0.1 ml
Concentration	This product is unpurified. The exact concentration of antibody is not quantifiable.
Storage	Store at -20C. Avoid freeze-thaw cycles.
Clonality	Monoclonal
Clone	EP1510Y
Preservative	0.01% Sodium Azide
Isotype	IgG
Purity	Tissue culture supernatant
Buffer	49% PBS, 0.05% BSA and 50% Glycerol
Product Description	
Host	Rabbit
Gene ID	5430
Gene Symbol	POLR2A
Species	Human, Mouse, Rat
Reactivity Notes	Reacts with: Mouse, Rat, Human
Specificity/Sensitivity	This antibody detects Pol II phosphorylated at serine 1801.
Immunogen	A phospho synthetic peptide corresponding to residues surrounding serine 1801 of human Pol II was used as an immunogen.
Notes	Produced using Abcam's RabMab® technology. RabMab® technology is covered by the following U.S. Patents, No. 5,675,063 and/or 7,429,487.
Product Application Details	
Applications	Western Blot, Immunocytochemistry/Immunofluorescence, Immunohistochemistry, Immunohistochemistry-Paraffin, Immunoprecipitation
Recommended Dilutions	Western Blot 1:1000-10000, Immunohistochemistry, Immunocytochemistry/Immunofluorescence 1:250-500, Immunoprecipitation 1:40, Immunohistochemistry-Paraffin 1:100-250
Application Notes	This product is useful for: Western Blot, Immunohistochemistry-Paraffin, Immunocytochemistry, Immunoprecipitation. In Western blot this antibody detects a band at approximately 270kDa.

Images

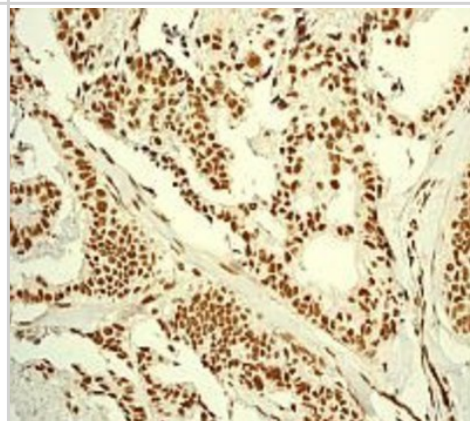
Immunocytochemistry/Immunofluorescence: RNA polymerase II [p Ser1801] Antibody (EP1510Y) [NB100-80032] - HeLa cells.



Immunohistochemistry-Paraffin: RNA polymerase II [p Ser1801] Antibody (EP1510Y) [NB100-80032] Human brain lysates. Cells were either (A) untreated (B) treated with AP.



Immunohistochemistry: RNA polymerase II [p Ser1801] Antibody (EP1510Y) [NB100-80032] - Immunohistochemical analysis of paraffin-embedded human breast carcinoma using anti-Pol II





Novus Biologicals USA

10730 E. Briarwood Avenue
Centennial, CO 80112
USA

Phone: 303.730.1950
Toll Free: 1.888.506.6887
Fax: 303.730.1966
novus@novusbio.com

Novus Biologicals Canada

461 North Service Road West, Unit B37
Oakville, ON L6M 2V5
Canada

Phone: 905.827.6400
Toll Free: 855.668.8722
Fax: 905.827.6402
canada@novusbio.com

Novus Biologicals Europe

19 Barton Lane
Abingdon Science Park
Abingdon, OX14 3NB, United Kingdom

Phone: (44) (0) 1235 529449
Free Phone: 0800 37 34 15
Fax: (44) (0) 1235 533420
info@bio-techne.com

General Contact Information

www.novusbio.com
Technical Support: technical@novusbio.com
Orders: orders@novusbio.com
General: novus@novusbio.com

Limitations

This product is for research use only and is not approved for use in humans or in clinical diagnosis. Primary Antibodies are guaranteed for 1 year from date of receipt.

For more information on our 100% guarantee, please visit www.novusbio.com/guarantee

Earn gift cards/discounts by submitting a review: www.novusbio.com/reviews/submit/NB100-80032

Earn gift cards/discounts by submitting a publication using this product:
www.novusbio.com/publications

