

Product Datasheet

Sodium Potassium ATPase Alpha 1 Antibody (EP1845Y) NB100-80005

Unit Size: 0.1 ml

Store at -20C. Avoid freeze-thaw cycles.

www.novusbio.com



technical@novusbio.com

Publications: 5

Protocols, Publications, Related Products, Reviews, Research Tools and Images at:
www.novusbio.com/NB100-80005

Updated 10/3/2017 v.20.1

Earn rewards for product
reviews and publications.

Submit a publication at www.novusbio.com/publications

Submit a review at www.novusbio.com/reviews/destination/NB100-80005



NB100-80005**Sodium Potassium ATPase Alpha 1 Antibody (EP1845Y)**

Product Information	
Unit Size	0.1 ml
Concentration	Please see the vial label for concentration. If unlisted please contact technical services.
Storage	Store at -20C. Avoid freeze-thaw cycles.
Clonality	Monoclonal
Clone	EP1845Y
Preservative	0.01% Sodium Azide
Isotype	IgG
Purity	Protein A purified
Buffer	49% PBS, 0.05% BSA and 50% Glycerol
Target Molecular Weight	100 kDa

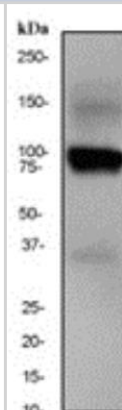
Product Description	
Host	Rabbit
Gene ID	476
Gene Symbol	ATP1A1
Species	Human, Mouse, Rat, Fish
Reactivity Notes	Reacts with: Tilapia
Marker	Plasma Membrane Marker
Immunogen	A synthetic peptide corresponding to residues near the N-terminus of human Na ⁺ /K ⁺ ATPase Alpha was used as an immunogen.
Notes	Produced using Abcam's RabMab® technology. RabMab® technology is covered by the following U.S. Patents, No. 5,675,063 and/or 7,429,487.

Product Application Details	
Applications	Western Blot, Flow Cytometry, Immunohistochemistry, Immunohistochemistry-Paraffin
Recommended Dilutions	Western Blot 1:10000-50000, Flow Cytometry 1:20, Immunohistochemistry 1:10-1:500, Immunohistochemistry-Paraffin 1:100-250
Application Notes	This product is useful for: Western Blot, Immunohistochemistry-Paraffin, Flow Cytometry. In Western blot this antibody detects a band at approximately 100kDa.

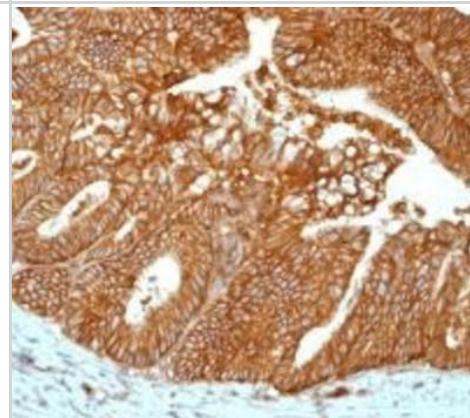


Images

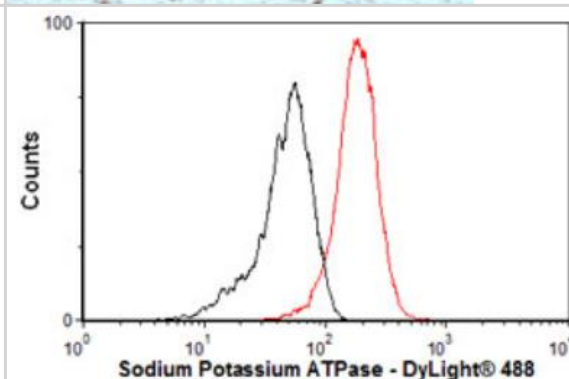
Western Blot: Sodium Potassium ATPase Alpha 1 Antibody (EP1845Y) [NB100-80005] - HeLa cell lysate using a 1:20,000 dilution.



Immunohistochemistry: Sodium Potassium ATPase Alpha 1 Antibody (EP1845Y) [NB100-80005] - Staining of paraffin-embedded human stomach carcinoma using Sodium Potassium ATPase Alpha 1 Antibody.



Flow Cytometry: Sodium Potassium ATPase Alpha 1 Antibody (EP1845Y) [NB100-80005] - Overlay histogram showing HeLa cells stained with Anti-Sodium Potassium ATPase antibody [EP1845Y] (red line).



Publications

Hosoya M, Fujioka M, Ogawa K, Okano H et al. Distinct Expression Patterns Of Causative Genes Responsible For Hereditary Progressive Hearing Loss In Non-Human Primate Cochlea Sci Rep Feb 26 2016 12:00AM [PMID: 26915689] (IHC-Fr, Primate)

McIntosh AL, Storey SM, Atshaves BP. Intracellular lipid droplets contain dynamic pools of sphingomyelin: ADRP binds phospholipids with high affinity. Lipids 2010 Jun [PMID: 20473576] (WB, Mouse)

Daley WP, Gulfo KM, Sequeira SJ et al. Identification of a mechanochemical checkpoint and negative feedback loop regulating branching morphogenesis. Dev Biol 2009 Dec [PMID: 19804774]

Kada S, Nakagawa T, Ito J et al. A mouse model for degeneration of the spiral ligament. J Assoc Res Otolaryngol 2009 Jun [PMID: 19212789] (IHC)

Kim H-M, Wangemann P. Epithelial cell stretching and luminal acidification lead to a retarded development of stria vascularis and deafness in mice lacking pendrin. PLoS ONE. 2011 [PMID: 21423764]



Novus Biologicals USA

10730 E. Briarwood Avenue
Centennial, CO 80112
USA

Phone: 303.730.1950
Toll Free: 1.888.506.6887
Fax: 303.730.1966
novus@novusbio.com

Novus Biologicals Canada

461 North Service Road West, Unit B37
Oakville, ON L6M 2V5
Canada

Phone: 905.827.6400
Toll Free: 855.668.8722
Fax: 905.827.6402
canada@novusbio.com

Novus Biologicals Europe

19 Barton Lane
Abingdon Science Park
Abingdon, OX14 3NB, United Kingdom
Phone: (44) (0) 1235 529449
Free Phone: 0800 37 34 15
Fax: (44) (0) 1235 533420
info@bio-techne.com

General Contact Information

www.novusbio.com
Technical Support: technical@novusbio.com
Orders: orders@novusbio.com
General: novus@novusbio.com

Limitations

This product is for research use only and is not approved for use in humans or in clinical diagnosis. Primary Antibodies are guaranteed for 1 year from date of receipt.

For more information on our 100% guarantee, please visit www.novusbio.com/guarantee

Earn gift cards/discounts by submitting a review: www.novusbio.com/reviews/submit/NB100-80005

Earn gift cards/discounts by submitting a publication using this product:
www.novusbio.com/publications

