

# Product Datasheet

## Abeta 40 Antibody (EP1876Y) NB100-79897

Unit Size: 0.1 ml

Store at -20C. Avoid freeze-thaw cycles.

[www.novusbio.com](http://www.novusbio.com)



[technical@novusbio.com](mailto:technical@novusbio.com)

Protocols, Publications, Related Products, Reviews, Research Tools and Images at:  
[www.novusbio.com/NB100-79897](http://www.novusbio.com/NB100-79897)

Updated 6/27/2018 v.20.1

Earn rewards for product  
reviews and publications.

Submit a publication at [www.novusbio.com/publications](http://www.novusbio.com/publications)

Submit a review at [www.novusbio.com/reviews/destination/NB100-79897](http://www.novusbio.com/reviews/destination/NB100-79897)



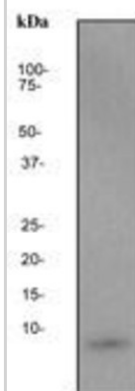
**NB100-79897**

Abeta 40 Antibody (EP1876Y)

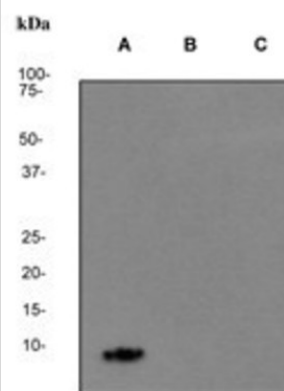
<b>Product Information</b>	
<b>Unit Size</b>	0.1 ml
<b>Concentration</b>	This product is unpurified. The exact concentration of antibody is not quantifiable.
<b>Storage</b>	Store at -20C. Avoid freeze-thaw cycles.
<b>Clonality</b>	Monoclonal
<b>Clone</b>	EP1876Y
<b>Preservative</b>	0.01% Sodium Azide
<b>Isotype</b>	IgG
<b>Purity</b>	Tissue culture supernatant
<b>Buffer</b>	49% PBS, 0.05% BSA and 50% Glycerol
<b>Product Description</b>	
<b>Host</b>	Rabbit
<b>Gene ID</b>	351
<b>Gene Symbol</b>	APP
<b>Species</b>	Human, Mouse (Negative), Rat (Negative)
<b>Reactivity Notes</b>	Reacts with: Human Does not react with Mouse, Rat
<b>Specificity/Sensitivity</b>	This antibody specifically recognizes Amyloid Beta Protein (ABeta4) variant ABeta-40.
<b>Immunogen</b>	A synthetic peptide corresponding to residues in human APP (Abeta40) was used as immunogen.
<b>Notes</b>	Produced using Abcam's RabMab® technology. RabMab® technology is covered by the following U.S. Patents, No. 5,675,063 and/or 7,429,487.
<b>Product Application Details</b>	
<b>Applications</b>	Western Blot
<b>Recommended Dilutions</b>	Western Blot 1:1000-10000
<b>Application Notes</b>	This product is useful for: Western Blot. In Western blot this antibody detects a band at approximately 4kDa.

**Images**

Western Blot: Abeta 40 Antibody (EP1876Y) [NB100-79897] 5ng of recombinant protein.



Western Blot: Abeta 40 Antibody (EP1876Y) [NB100-79897] - analysis on A Beta 40 (lane A), A Beta 42 (lane B) and A Beta 38 (lane C) using NB100-79897, dilution 1:100.





### **Novus Biologicals USA**

10730 E. Briarwood Avenue  
Centennial, CO 80112  
USA

Phone: 303.730.1950  
Toll Free: 1.888.506.6887  
Fax: 303.730.1966  
novus@novusbio.com

### **Novus Biologicals Canada**

461 North Service Road West, Unit B37  
Oakville, ON L6M 2V5  
Canada

Phone: 905.827.6400  
Toll Free: 855.668.8722  
Fax: 905.827.6402  
canada@novusbio.com

### **Novus Biologicals Europe**

19 Barton Lane  
Abingdon Science Park  
Abingdon, OX14 3NB, United Kingdom

Phone: (44) (0) 1235 529449  
Free Phone: 0800 37 34 15  
Fax: (44) (0) 1235 533420  
info@bio-techne.com

### **General Contact Information**

www.novusbio.com  
Technical Support: technical@novusbio.com  
Orders: orders@novusbio.com  
General: novus@novusbio.com

### **Limitations**

This product is for research use only and is not approved for use in humans or in clinical diagnosis. Primary Antibodies are guaranteed for 1 year from date of receipt.

For more information on our 100% guarantee, please visit [www.novusbio.com/guarantee](http://www.novusbio.com/guarantee)

Earn gift cards/discounts by submitting a review: [www.novusbio.com/reviews/submit/NB100-79897](http://www.novusbio.com/reviews/submit/NB100-79897)

Earn gift cards/discounts by submitting a publication using this product:  
[www.novusbio.com/publications](http://www.novusbio.com/publications)

