

Product Datasheet

CSE1L/CAS/Exportin-2 Antibody - BSA Free NB100-79803

Unit Size: 100 ul

Store at 4C. Do not freeze.

www.novusbio.com



technical@novusbio.com

Protocols, Publications, Related Products, Reviews, Research Tools and Images at:
www.novusbio.com/NB100-79803

Updated 2/21/2025 v.20.1

Earn rewards for product
reviews and publications.

Submit a publication at www.novusbio.com/publications

Submit a review at www.novusbio.com/reviews/destination/NB100-79803



NB100-79803

CSE1L/CAS/Exportin-2 Antibody - BSA Free

Product Information

Unit Size	100 ul
Concentration	1.0 mg/ml
Storage	Store at 4C. Do not freeze.
Clonality	Polyclonal
Preservative	0.09% Sodium Azide
Isotype	IgG
Purity	Immunogen affinity purified
Buffer	Tris-Citrate/Phosphate (pH 7.0 - 8.0)

Product Description

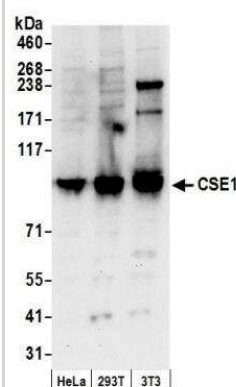
Host	Rabbit
Gene ID	1434
Gene Symbol	CSE1L
Species	Human, Mouse
Immunogen	The immunogen recognized by this antibody maps to a region between residues 1 and 50 of human Chromosome Segregation-1 using the numbering given in entry NP_001307.2 (GenelD 1434).

Product Application Details

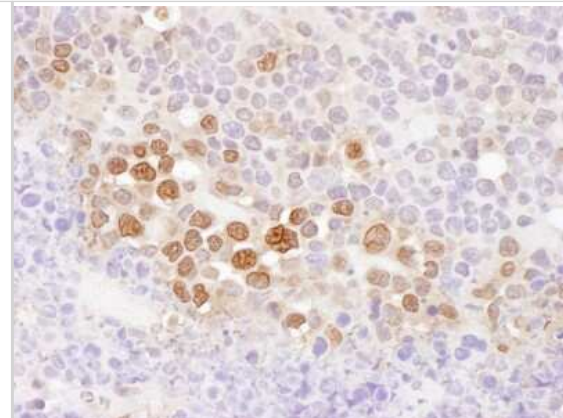
Applications	Western Blot, Immunohistochemistry, Immunohistochemistry-Paraffin, Immunoprecipitation
Recommended Dilutions	Western Blot 1:10000-1:25000, Immunohistochemistry 1:2000-1:10000, Immunoprecipitation 2-5 ug/mg lysate, Immunohistochemistry-Paraffin 1:10-1:500
Application Notes	Immunohistochemistry 1:2,000 - 1:10,000. Epitope retrieval with citrate buffer pH 6.0 is recommended for FFPE tissue sections.

Images

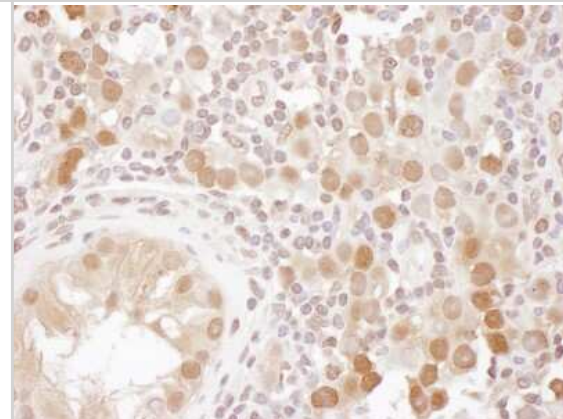
Western Blot: CSE1L/CAS/Exportin-2 Antibody [NB100-79803] - Detection of Human and Mouse CSE1 by Western Blot. Samples: Whole cell lysate (50 ug) from HeLa, 293T, and mouse NIH3T3 cells prepared using NETN lysis buffer. Antibody: Affinity purified rabbit anti-CSE1 antibody NB100-79803 used for WB at 0.4 ug/ml. Detection: Chemiluminescence with an exposure time of 10 seconds.



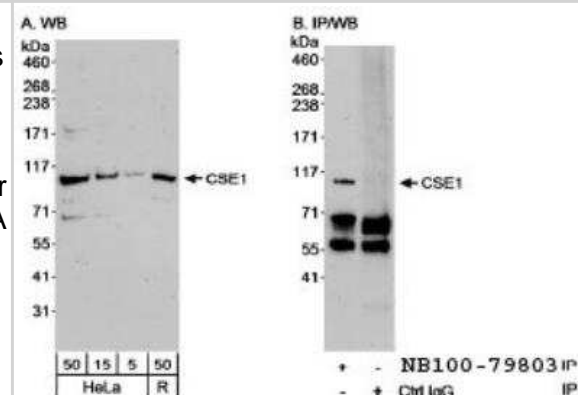
Immunohistochemistry-Paraffin: CSE1L/CAS/Exportin-2 Antibody [NB100-79803] - Mouse plasmacytoma. Antibody: Affinity purified rabbit anti-CSE1 used at a dilution of 1:5,000 (0.2ug/ml). Detection: DAB



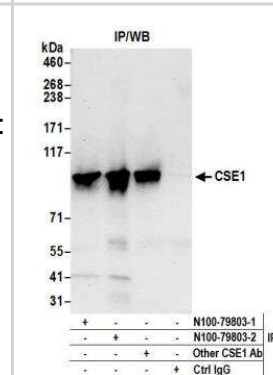
Immunohistochemistry-Paraffin: CSE1L/CAS/Exportin-2 Antibody [NB100-79803] - Human testicular seminoma. Antibody: Affinity purified rabbit anti-CSE1 used at a dilution of 1:5,000 (0.2ug/ml). Detection: DAB



Immunoprecipitation: CSE1L/CAS/Exportin-2 Antibody [NB100-79803] - Samples: A. Whole cell lysate from HeLa (5, 15 and 50 mcg) and Ramos (R; 50 mcg) cells. B. Whole cell lysate (1 mg for IP, 1/4 of IP loaded) from HeLa cells. Antibody: Affinity purified rabbit anti-CSE1L/CAS/Exportin-2 antibody BL1975 (Cat. No. NB100-79803) used at 0.04 mcg/ml (A) and 0.1 mcg/ml (B) for WB and at 3 mcg/mg lysate for IP. Detection: Chemiluminescence with an exposure time of 3 minutes (A and B).



Immunoprecipitation: CSE1L/CAS/Exportin-2 Antibody [NB100-79803] - Detection of human CSE1 by western blot of immunoprecipitates. Samples: Whole cell lysate (0.5 or 1.0 mg per IP reaction; 20% of IP loaded) from HEK293T cells prepared using NETN lysis buffer. Antibody: Affinity purified rabbit anti-CSE1 antibody NB100-79803 (lot NB100-79803-2) used for IP at 6 ug per reaction. CSE1 was also immunoprecipitated by a previous lot of this antibody (NB100-79803-1) and another rabbit anti-CSE1 antibody. For blotting immunoprecipitated CSE1, NB100-79803 was used at 1 ug/ml. Detection: Chemiluminescence with an exposure time of 10 seconds.





Novus Biologicals USA

10730 E. Briarwood Avenue
Centennial, CO 80112
USA
Phone: 303.730.1950
Toll Free: 1.888.506.6887
Fax: 303.730.1966
nb-customerservice@bio-techne.com

Bio-Techne Canada

21 Canmotor Ave
Toronto, ON M8Z 4E6
Canada
Phone: 905.827.6400
Toll Free: 855.668.8722
Fax: 905.827.6402
canada.inquires@bio-techne.com

Bio-Techne Ltd

19 Barton Lane
Abingdon Science Park
Abingdon, OX14 3NB, United Kingdom
Phone: (44) (0) 1235 529449
Free Phone: 0800 37 34 15
Fax: (44) (0) 1235 533420
info.EMEA@bio-techne.com

General Contact Information

www.novusbio.com
Technical Support: nb-technical@bio-techne.com
Orders: nb-customerservice@bio-techne.com
General: novus@novusbio.com

Products Related to NB100-79803

HAF008	Goat anti-Rabbit IgG Secondary Antibody [HRP]
NB7160	Goat anti-Rabbit IgG (H+L) Secondary Antibody [HRP]
NBP2-24891	Rabbit IgG Isotype Control
H00001434-P01-10ug	Recombinant Human CSE1L/CAS/Exportin-2 GST (N-Term) Protein

Limitations

This product is for research use only and is not approved for use in humans or in clinical diagnosis. Primary Antibodies are guaranteed for 1 year from date of receipt.

For more information on our 100% guarantee, please visit www.novusbio.com/guarantee

Earn gift cards/discounts by submitting a review: www.novusbio.com/reviews/submit/NB100-79803

Earn gift cards/discounts by submitting a publication using this product:
www.novusbio.com/publications

