

Product Datasheet

PSGL-1/CD162 Antibody (HECA-452) - BSA Free NB100-78039

Unit Size: 0.1 ml

Store at 4C short term. Aliquot and store at -20C long term. Avoid freeze-thaw cycles.

www.novusbio.com



technical@novusbio.com

Reviews: 1 Publications: 12

Protocols, Publications, Related Products, Reviews, Research Tools and Images at:
www.novusbio.com/NB100-78039

Updated 2/21/2025 v.20.1

**Earn rewards for product
reviews and publications.**

Submit a publication at www.novusbio.com/publications

Submit a review at www.novusbio.com/reviews/destination/NB100-78039



NB100-78039

PSGL-1/CD162 Antibody (HECA-452) - BSA Free

Product Information

Unit Size	0.1 ml
Concentration	1.0 mg/ml
Storage	Store at 4C short term. Aliquot and store at -20C long term. Avoid freeze-thaw cycles.
Clonality	Monoclonal
Clone	HECA-452
Preservative	0.02% Sodium Azide
Isotype	IgM Kappa
Purity	IgM purified
Buffer	PBS

Product Description

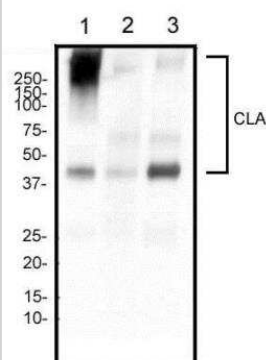
Host	Rat
Gene ID	6404
Gene Symbol	SELPLG
Species	Human, Mouse
Specificity/Sensitivity	CLA antibody clone HECA-452 is known to recognize the cutaneous lymphocyte-associated antigen / CLA which is a specialized glycosylated form of P-selectin glycoprotein ligand-1/PSGL-1. Besides lymphocytes, this clone has been shown to react with normal endometrium as well as breast cancer tissues (PMID 19625313 and 22970241).
Immunogen	Human tonsil stroma

Product Application Details

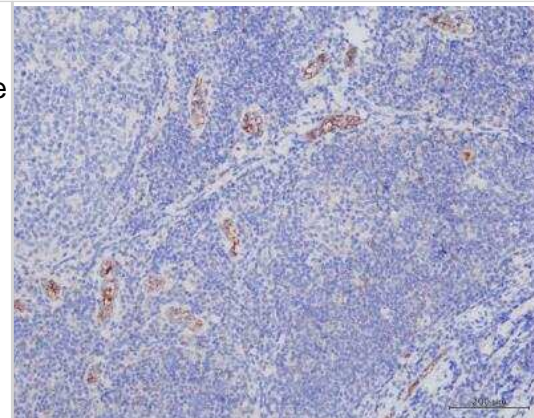
Applications	Western Blot, ELISA, Flow Cytometry, Flow (Cell Surface), Immunocytochemistry/ Immunofluorescence, Immunohistochemistry, Immunohistochemistry-Frozen, Immunohistochemistry-Paraffin, CyTOF-ready
Recommended Dilutions	Western Blot 2 ug/ml, Flow Cytometry < = 2 ug/10 ⁶ cells in 100 ul, ELISA, Immunohistochemistry 1:10-1:500, Immunocytochemistry/ Immunofluorescence reported in scientific literature (PMID 1693467), Immunohistochemistry-Paraffin 1:10-1:500, Immunohistochemistry-Frozen 1:10-1:500, Flow (Cell Surface), CyTOF-ready

Images

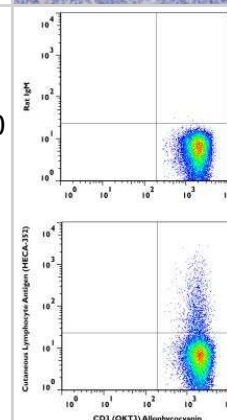
Western Blot: PSGL-1/CD162 Antibody (HECA-452) [NB100-78039] - Cutaneous Lymphocyte Antigen (CLA) Antibody (HECA-452) [NB100-78039] - Analysis of human tonsil (1), human spleen (2), and human lymph node (3) tissue using CD162 antibody at a concentration of 2 ug/ml.



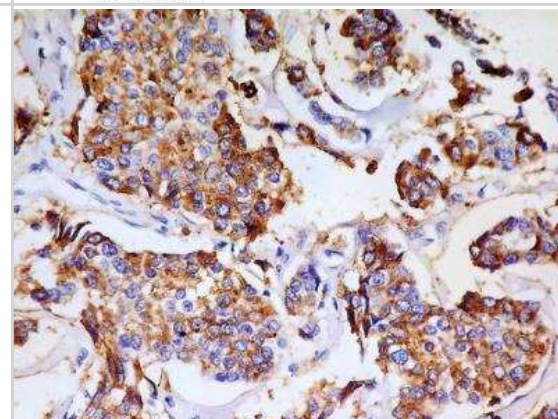
Immunohistochemistry-Paraffin: PSGL-1/CD162 Antibody (HECA-452) [NB100-78039] - Human tonsil tissue stained with PSGL-1/CD162 Antibody (HECA-452) at 5ug/mL, and Leica Refine DAB kit. IHC-P image submitted by a verified customer review.



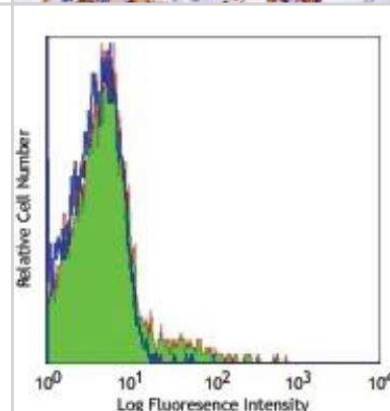
Flow (Cell Surface): PSGL-1/CD162 Antibody (HECA-452) [NB100-78039] - Cutaneous Lymphocyte Antigen (CLA) Antibody (HECA-452) [NB100-78039] - A cell surface stain was performed on CD3+ hPBMCs with Cutaneous Lymphocyte Antigen (CLA) antibody (HECA-452) NB100-78039 and a matched isotype control NBP2-31379. Cells were incubated in an antibody dilution of 1 ug/mL for 20 minutes at room temperature, followed by mouse F(ab)2 IgG (H+L) APC-conjugated secondary antibody [F0101B, R&D Systems]. A co-stain was performed using CD3 antibody NBP2-25186APC.



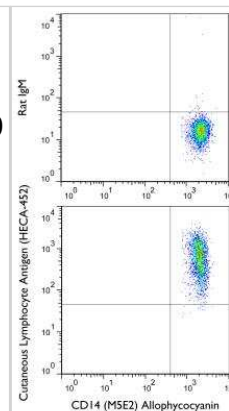
Immunohistochemistry-Paraffin: PSGL-1/CD162 Antibody (HECA-452) [NB100-78039] - Cutaneous Lymphocyte Antigen (CLA) Antibody (HECA-452) [NB100-78039] - IHC analysis of formalin-fixed paraffin-embedded tissue section of human breast adenocarcinoma using CLA antibody (clone HECA-452) at 5 ug/ml concentration. The antibody generated a membrane-cytoplasmic staining in the cancerous cells of breast adenocarcinoma. Note:- Besides lymphocytes, CLA has been shown to be present on cells of normal endometrium as well as breast cancer tissues (PMID 19625313 and 22970241).



Flow Cytometry: PSGL-1/CD162 Antibody (HECA-452) [NB100-78039] - Cutaneous Lymphocyte Antigen (CLA) Antibody (HECA-452) [NB100-78039] - Human peripheral blood lymphocytes stained with purified HECA-452, followed by anti-mouse IgG FITC



Flow (Cell Surface): PSGL-1/CD162 Antibody (HECA-452) [NB100-78039] - Cutaneous Lymphocyte Antigen (CLA) Antibody (HECA-452) [NB100-78039] - A cell surface stain was performed on CD14+ hPBMCs with Cutaneous Lymphocyte Antigen (CLA) antibody (HECA-452) NB100-78039 and a matched isotype control NBP2-31379. Cells were incubated in an antibody dilution of 1 ug/mL for 20 minutes at room temperature, followed by rat-Dylight 488 conjugated secondary antibody. A co-stain was performed using CD14 antibody NB100-77758AF488.



Publications

Qi Xu, Ming Shi, Lu Ding, Yu Xia, Liang Luo, Xiaofang Lu, Xiaoying Zhang, David Y. B. Deng High expression of P-selectin induces neutrophil extracellular traps via the PSGL-1/Syk/Ca²⁺/PAD4 pathway to exacerbate acute pancreatitis *Frontiers in Immunology* 2023-09-28 [PMID: 37841279]

Li GX, Jiang XH, Zang JN et al. B-cell receptor associated protein 31 deficiency decreases the expression of adhesion molecule CD11b/CD18 and PSGL-1 in neutrophils to ameliorate acute lung injury *The International Journal of Biochemistry & Cell Biology* 2022-11-01 [PMID: 36210579] (Western Blot, Block/Neutralize)

Shi H, Jiang C, Yao H et al. CD44 fucosylation on bone marrow-derived mesenchymal stem cells enhances homing and promotes enteric nervous system remodeling in diabetic mice *Cell & Bioscience* 2021-12-01 [PMID: 34193268] (Mouse)

Yeini E, Ofek P, Pozzi S et al. P-selectin axis plays a key role in microglia immunophenotype and glioblastoma progression *Nature communications* 2021-03-26 [PMID: 33771989] (FLOW)

Yamanaka K, Dimitroff CJ, Fuhlbrigge RC et al. Vitamins A and D are potent inhibitors of cutaneous lymphocyte-associated antigen expression. *J Allergy Clin Immunol.* 2008-01-01 [PMID: 17910894] (WB)

Picker LJ, Michie SA, Rott LS, Butcher EC. A unique phenotype of skin-associated lymphocytes in humans. Preferential expression of the HECA-452 epitope by benign and malignant T cells at cutaneous sites. *Am J Pathol.* 1990-05-01 [PMID: 1693467] (IF/IHC, WB, FLOW)

Walcheck B, Leppanen A, Cummings R et al. The monoclonal antibody CHO-131 binds to a core 2 O-glycan terminated with sialyl-Lewis x, which is a functional glycan ligand for P-selectin. *Blood.* 2002-06-01 [PMID: 12010808] (FLOW, ELISA)

Borges E, Pendl G, Eytner R et al. The binding of T cell-expressed P-selectin glycoprotein ligand-1 to E- and P-selectin is differentially regulated. *J Biol Chem.* 1997-11-01 [PMID: 9353350]

Picker LJ, Kishimoto TK, Smith CW et al. ELAM-1 is an adhesion molecule for skin-homing T cells. *Nature.* 1991-02-01 [PMID: 1705666]

Berg EL, Yoshino T, Rott LS et al. The cutaneous lymphocyte antigen is a skin lymphocyte homing receptor for the vascular lectin endothelial cell-leukocyte adhesion molecule 1. *J Exp Med.* 1991-12-01 [PMID: 1720810]

Duijvestijn AM, Horst E, Pals ST et al. High endothelial differentiation in human lymphoid and inflammatory tissues defined by monoclonal antibody HECA-452. *Am J Pathol.* 1988-01-01 [PMID: 3276207]

Kim CH, Cheong KA, Park CD, Lee AY. Therapeutic Effects of Combination Using Glucosamine Plus Tacrolimus (FK-506) on The Development of Atopic Dermatitis-Like Skin Lesions in NC/Nga Mice. *Scand J Immunol*;75(5):471-8. 2012-05-01 [PMID: 22023698] (IF/IHC, Mouse)



Novus Biologicals USA

10730 E. Briarwood Avenue
Centennial, CO 80112
USA
Phone: 303.730.1950
Toll Free: 1.888.506.6887
Fax: 303.730.1966
nb-customerservice@bio-techne.com

Bio-Techne Canada

21 Canmotor Ave
Toronto, ON M8Z 4E6
Canada
Phone: 905.827.6400
Toll Free: 855.668.8722
Fax: 905.827.6402
canada.inquires@bio-techne.com

Bio-Techne Ltd

19 Barton Lane
Abingdon Science Park
Abingdon, OX14 3NB, United Kingdom
Phone: (44) (0) 1235 529449
Free Phone: 0800 37 34 15
Fax: (44) (0) 1235 533420
info.EMEA@bio-techne.com

General Contact Information

www.novusbio.com
Technical Support: nb-technical@bio-techne.com
Orders: nb-customerservice@bio-techne.com
General: novus@novusbio.com

Products Related to NB100-78039

NBL1-15720	SR-BI Overexpression Lysate
HAF005	Goat anti-Rat IgG Secondary Antibody [HRP]
F0105B	Goat anti-Rat IgG Secondary Antibody [Phycoerythrin]
NBP1-43320-0.5mg	Rat IgM Kappa Light Chain Isotype Control (eBRM)

Limitations

This product is for research use only and is not approved for use in humans or in clinical diagnosis. Primary Antibodies are guaranteed for 1 year from date of receipt.

For more information on our 100% guarantee, please visit www.novusbio.com/guarantee

Earn gift cards/discounts by submitting a review: www.novusbio.com/reviews/submit/NB100-78039

Earn gift cards/discounts by submitting a publication using this product:
www.novusbio.com/publications

