

Product Datasheet

WDR62 Antibody - BSA Free

NB100-77302

Unit Size: 100 ul

Store at 4C. Do not freeze.

www.novusbio.com



technical@novusbio.com

Publications: 1

Protocols, Publications, Related Products, Reviews, Research Tools and Images at:
www.novusbio.com/NB100-77302

Updated 2/21/2025 v.20.1

Earn rewards for product
reviews and publications.

Submit a publication at www.novusbio.com/publications

Submit a review at www.novusbio.com/reviews/destination/NB100-77302



NB100-77302

WDR62 Antibody - BSA Free

Product Information

Unit Size	100 ul
Concentration	1.0 mg/ml
Storage	Store at 4C. Do not freeze.
Clonality	Polyclonal
Preservative	0.09% Sodium Azide
Isotype	IgG
Purity	Immunogen affinity purified
Buffer	Tris-Citrate/Phosphate (pH 7.0 - 8.0)

Product Description

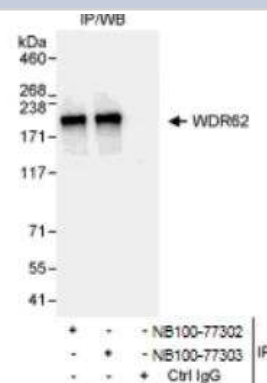
Host	Rabbit
Gene ID	284403
Gene Symbol	WDR62
Species	Human, Mouse
Reactivity Notes	Mouse reactivity reported in (PMID: 22899712).
Immunogen	The immunogen recognized by this antibody maps to a region between residue 750 and 800 of human WD repeat domain 62 using the numbering given in entry NP_775907.4 (GeneID 284403).

Product Application Details

Applications	Western Blot, Immunocytochemistry/ Immunofluorescence, Immunoprecipitation
Recommended Dilutions	Western Blot 1:100-1:2000, Immunocytochemistry/ Immunofluorescence 1:10-1:2000, Immunoprecipitation 2-5 ug/mg lysate
Application Notes	ICC/IF and WB were reported in scientific literature (PMID: 22899712).

Images

Immunoprecipitation: WDR62 Antibody [NB100-77302] - Whole cell lysate (1 mg for IP, 20% of IP loaded) from HeLa cells. Antibodies: Affinity purified rabbit anti-WDR62 antibody NB100-77302 used for IP at 3 ug/mg lysate. WDR62 was also immunoprecipitated by rabbit anti WDR62 antibody NB100-77303 which recognizes a downstream epitope. For blotting immunoprecipitated WDR62, NB100-77303 was used at 1 ug/ml. Detection: Chemiluminescence with an exposure time of 3 seconds.

**Publications**

Bogoyevitch MA, Yeap YY, Qu Z et al. WD40-repeat protein 62 is a JNK-phosphorylated spindle pole protein required for spindle maintenance and timely mitotic progression. J Cell Sci 2012-11-01 [PMID: 22899712] (ICC/IF, WB, Mouse)



Novus Biologicals USA

10730 E. Briarwood Avenue
Centennial, CO 80112
USA
Phone: 303.730.1950
Toll Free: 1.888.506.6887
Fax: 303.730.1966
nb-customerservice@bio-techne.com

Bio-Techne Canada

21 Canmotor Ave
Toronto, ON M8Z 4E6
Canada
Phone: 905.827.6400
Toll Free: 855.668.8722
Fax: 905.827.6402
canada.inquires@bio-techne.com

Bio-Techne Ltd

19 Barton Lane
Abingdon Science Park
Abingdon, OX14 3NB, United Kingdom
Phone: (44) (0) 1235 529449
Free Phone: 0800 37 34 15
Fax: (44) (0) 1235 533420
info.EMEA@bio-techne.com

General Contact Information

www.novusbio.com
Technical Support: nb-technical@bio-techne.com
Orders: nb-customerservice@bio-techne.com
General: novus@novusbio.com

Products Related to NB100-77302

HAF008	Goat anti-Rabbit IgG Secondary Antibody [HRP]
NB7160	Goat anti-Rabbit IgG (H+L) Secondary Antibody [HRP]
NBP2-24891	Rabbit IgG Isotype Control
H00284403-P01-10ug	Recombinant Human WDR62 GST (N-Term) Protein

Limitations

This product is for research use only and is not approved for use in humans or in clinical diagnosis. Primary Antibodies are guaranteed for 1 year from date of receipt.

For more information on our 100% guarantee, please visit www.novusbio.com/guarantee

Earn gift cards/discounts by submitting a review: www.novusbio.com/reviews/submit/NB100-77302

Earn gift cards/discounts by submitting a publication using this product:
www.novusbio.com/publications

