

Product Datasheet

CLIC3 Antibody NB100-75518

Unit Size: 0.05 mg

Store at 4C short term. Aliquot and store at -20C long term. Avoid freeze-thaw cycles.

www.novusbio.com



technical@novusbio.com

Protocols, Publications, Related Products, Reviews, Research Tools and Images at:
www.novusbio.com/NB100-75518

Updated 10/31/2021 v.20.1

Earn rewards for product
reviews and publications.

Submit a publication at www.novusbio.com/publications

Submit a review at www.novusbio.com/reviews/destination/NB100-75518



NB100-75518

CLIC3 Antibody

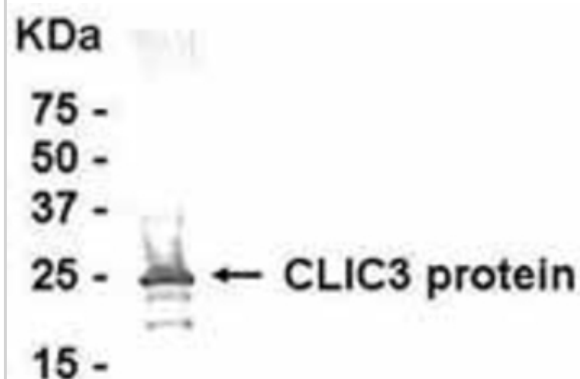
Product Information	
Unit Size	0.05 mg
Concentration	Please see the vial label for concentration. If unlisted please contact technical services.
Storage	Store at 4C short term. Aliquot and store at -20C long term. Avoid freeze-thaw cycles.
Clonality	Polyclonal
Preservative	No Preservative
Purity	Immunogen affinity purified
Buffer	PBS

Product Description	
Host	Chicken
Gene ID	9022
Gene Symbol	CLIC3
Species	Human, Mouse, Rat
Reactivity Notes	This antibody is reactive against Human, mouse, rat.
Specificity/Sensitivity	CLIC3
Immunogen	The immunogen for this antibody was a sequence from 29a.a. to 236a.a. from CLIC3(a 236a.a. long protein)
Notes	Chicken products cannot be exported to Canada.

Product Application Details	
Applications	Western Blot
Recommended Dilutions	Western Blot
Application Notes	Western Blot: Human Placenta protein extract as test antigen. loaded 70ug per lane. Affi-pure IgY dilution: 1:500. Goat anti-IgY-HRP dilution: 1:1000. Colorimetric method for signal development.

Images

Western Blot: Human Placenta protein extract as test antigen, loaded 70ug per lane. Affi-pure IgY dilution: 1:500, Goat anti-IgY-HRP dilution: 1:1000. Colorimetric method for signal development. (anti-CLIC3)





Novus Biologicals USA

10730 E. Briarwood Avenue
Centennial, CO 80112
USA

Phone: 303.730.1950
Toll Free: 1.888.506.6887
Fax: 303.730.1966
novus@novusbio.com

Bio-Techne Canada

21 Canmotor Ave
Toronto, ON M8Z 4E6
Canada

Phone: 905.827.6400
Toll Free: 855.668.8722
Fax: 905.827.6402
canada.inquires@bio-techne.com

Bio-Techne Ltd

19 Barton Lane
Abingdon Science Park
Abingdon, OX14 3NB, United Kingdom
Phone: (44) (0) 1235 529449
Free Phone: 0800 37 34 15
Fax: (44) (0) 1235 533420
info.EMEA@bio-techne.com

General Contact Information

www.novusbio.com
Technical Support: technical@novusbio.com
Orders: orders@novusbio.com
General: novus@novusbio.com

Limitations

This product is for research use only and is not approved for use in humans or in clinical diagnosis. Primary Antibodies are guaranteed for 1 year from date of receipt.

For more information on our 100% guarantee, please visit www.novusbio.com/guarantee

Earn gift cards/discounts by submitting a review: www.novusbio.com/reviews/submit/NB100-75518

Earn gift cards/discounts by submitting a publication using this product:
www.novusbio.com/publications

