

# Product Datasheet

## katanin-p80 Antibody NB100-75489

Unit Size: 0.05 mg

Store at 4C short term. Aliquot and store at -20C long term. Avoid freeze-thaw cycles.

[www.novusbio.com](http://www.novusbio.com)



[technical@novusbio.com](mailto:technical@novusbio.com)

Protocols, Publications, Related Products, Reviews, Research Tools and Images at:  
[www.novusbio.com/NB100-75489](http://www.novusbio.com/NB100-75489)

Updated 10/31/2021 v.20.1

Earn rewards for product  
reviews and publications.

Submit a publication at [www.novusbio.com/publications](http://www.novusbio.com/publications)

Submit a review at [www.novusbio.com/reviews/destination/NB100-75489](http://www.novusbio.com/reviews/destination/NB100-75489)



**NB100-75489**

katanin-p80 Antibody

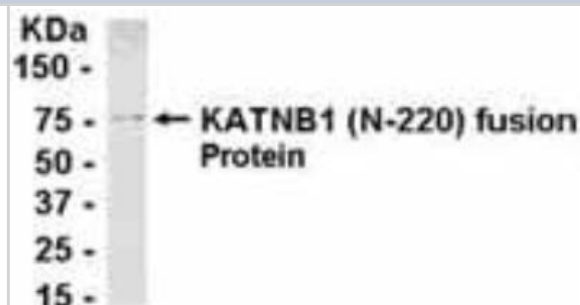
Product Information	
Unit Size	0.05 mg
Concentration	Please see the vial label for concentration. If unlisted please contact technical services.
Storage	Store at 4C short term. Aliquot and store at -20C long term. Avoid freeze-thaw cycles.
Clonality	Polyclonal
Preservative	No Preservative
Purity	Immunogen affinity purified
Buffer	PBS

Product Description	
Host	Chicken
Gene ID	10300
Gene Symbol	KATNB1
Species	Human, Mouse, Rat
Reactivity Notes	This antibody is reactive against Human, mouse, rat.
Specificity/Sensitivity	katanin-p80
Immunogen	The immunogen for this antibody was a sequence from 1a.a. to 220a.a. from Katanin p80(a 655a.a. long protein)
Notes	Chicken products cannot be exported to Canada.

Product Application Details	
Applications	Western Blot
Recommended Dilutions	Western Blot
Application Notes	Western Blot: E coli-derived fusion protein as test antigen. Affinity-purified IgY dilution: 1:2000. Goat anti-IgY-HRP dilution: 1:1000. Colorimetric method for signal development.

**Images**

Western Blot: katanin-p80 Antibody [NB100-75489] - E coli-derived fusion protein as test antigen. Affinity-purified IgY dilution: 1:2000, Goat anti-IgY-HRP dilution: 1:1000. Colorimetric method for signal development. ( anti-KAT )





### **Novus Biologicals USA**

10730 E. Briarwood Avenue  
Centennial, CO 80112  
USA

Phone: 303.730.1950  
Toll Free: 1.888.506.6887  
Fax: 303.730.1966  
novus@novusbio.com

### **Bio-Techne Canada**

21 Canmotor Ave  
Toronto, ON M8Z 4E6  
Canada

Phone: 905.827.6400  
Toll Free: 855.668.8722  
Fax: 905.827.6402  
canada.inquires@bio-techne.com

### **Bio-Techne Ltd**

19 Barton Lane  
Abingdon Science Park  
Abingdon, OX14 3NB, United Kingdom

Phone: (44) (0) 1235 529449  
Free Phone: 0800 37 34 15  
Fax: (44) (0) 1235 533420  
info.EMEA@bio-techne.com

### **General Contact Information**

www.novusbio.com  
Technical Support: technical@novusbio.com  
Orders: orders@novusbio.com  
General: novus@novusbio.com

### **Limitations**

This product is for research use only and is not approved for use in humans or in clinical diagnosis. Primary Antibodies are guaranteed for 1 year from date of receipt.

For more information on our 100% guarantee, please visit [www.novusbio.com/guarantee](http://www.novusbio.com/guarantee)

Earn gift cards/discounts by submitting a review: [www.novusbio.com/reviews/submit/NB100-75489](http://www.novusbio.com/reviews/submit/NB100-75489)

Earn gift cards/discounts by submitting a publication using this product:  
[www.novusbio.com/publications](http://www.novusbio.com/publications)

