

Product Datasheet

Cyclophilin-F Antibody NB100-75452

Unit Size: 0.05 mg

Store at 4C short term. Aliquot and store at -20C long term. Avoid freeze-thaw cycles.

www.novusbio.com



technical@novusbio.com

Protocols, Publications, Related Products, Reviews, Research Tools and Images at:
www.novusbio.com/NB100-75452

Updated 10/31/2021 v.20.1

Earn rewards for product
reviews and publications.

Submit a publication at www.novusbio.com/publications

Submit a review at www.novusbio.com/reviews/destination/NB100-75452



NB100-75452**Cyclophilin-F Antibody**

Product Information	
Unit Size	0.05 mg
Concentration	Please see the vial label for concentration. If unlisted please contact technical services.
Storage	Store at 4C short term. Aliquot and store at -20C long term. Avoid freeze-thaw cycles.
Clonality	Polyclonal
Preservative	No Preservative
Purity	Immunogen affinity purified
Buffer	PBS

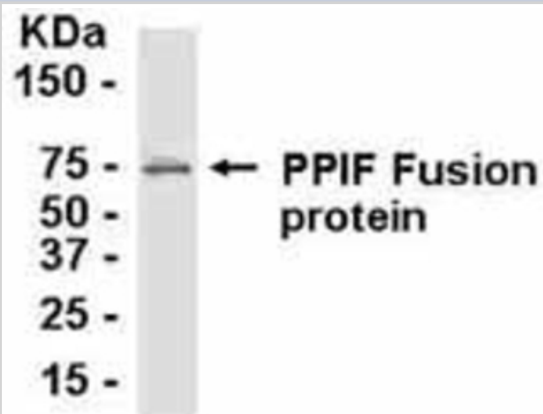
Product Description	
Host	Chicken
Gene ID	10105
Gene Symbol	PPIF
Species	Human, Mouse, Rat
Reactivity Notes	This antibody is reactive against Human, mouse, rat.
Specificity/Sensitivity	Cyclophilin-F
Immunogen	The immunogen for this antibody was a sequence from 1a.a. to 207a.a. from Cyclophilin F(a 207a.a. long protein)
Notes	Chicken products cannot be exported to Canada.

Product Application Details	
Applications	Western Blot, ELISA
Recommended Dilutions	Western Blot, ELISA
Application Notes	ELISA: Direct Elisa Test. Protein as test antigen. Affi-pure IgY as primary antibody and Goat anti-IgY HRP as 2nd antibody. Fixed amount of antibody (1 ug/ml) and serial dilutions of antigen.

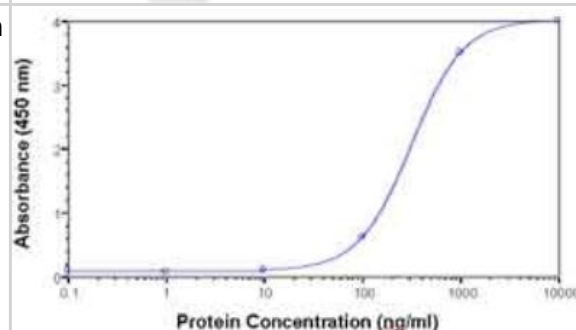


Images

Western Blot: E coli-derived fusion protein as test antigen. Affinity-purified IgY dilution: 1:2000, Goat anti-IgY-HRP dilution: 1:1000. Colorimetric method for signal development. (anti-PPIF)



ELISA: Cyclophilin-F Antibody [NB100-75452] - Direct Elisa Test. Protein as test antigen. Affi-pure IgY as primary antibody and Goat anti-IgY HRP as 2nd antibody. Fixed amount of antibody (1 ug/ml) and serial dilutions of antigen. (anti-PPIF)





Novus Biologicals USA

10730 E. Briarwood Avenue
Centennial, CO 80112
USA
Phone: 303.730.1950
Toll Free: 1.888.506.6887
Fax: 303.730.1966
novus@novusbio.com

Bio-Techne Canada

21 Canmotor Ave
Toronto, ON M8Z 4E6
Canada
Phone: 905.827.6400
Toll Free: 855.668.8722
Fax: 905.827.6402
canada.inquires@bio-techne.com

Bio-Techne Ltd

19 Barton Lane
Abingdon Science Park
Abingdon, OX14 3NB, United Kingdom
Phone: (44) (0) 1235 529449
Free Phone: 0800 37 34 15
Fax: (44) (0) 1235 533420
info.EMEA@bio-techne.com

General Contact Information

www.novusbio.com
Technical Support: technical@novusbio.com
Orders: orders@novusbio.com
General: novus@novusbio.com

Limitations

This product is for research use only and is not approved for use in humans or in clinical diagnosis. Primary Antibodies are guaranteed for 1 year from date of receipt.

For more information on our 100% guarantee, please visit www.novusbio.com/guarantee

Earn gift cards/discounts by submitting a review: www.novusbio.com/reviews/submit/NB100-75452

Earn gift cards/discounts by submitting a publication using this product:
www.novusbio.com/publications

