

# Product Datasheet

## CDCA3 Antibody NB100-74622

Unit Size: 100 ul

Store at 4C. Do not freeze.

[www.novusbio.com](http://www.novusbio.com)



[technical@novusbio.com](mailto:technical@novusbio.com)

Protocols, Publications, Related Products, Reviews, Research Tools and Images at:  
[www.novusbio.com/NB100-74622](http://www.novusbio.com/NB100-74622)

Updated 8/2/2022 v.20.1

Earn rewards for product  
reviews and publications.

Submit a publication at [www.novusbio.com/publications](http://www.novusbio.com/publications)

Submit a review at [www.novusbio.com/reviews/destination/NB100-74622](http://www.novusbio.com/reviews/destination/NB100-74622)



**NB100-74622**

## CDCA3 Antibody

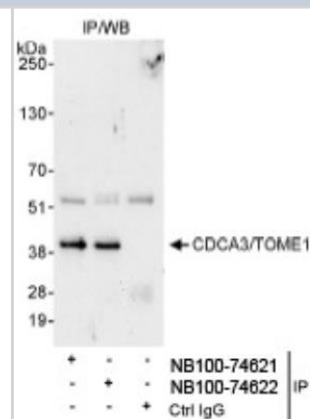
Product Information	
Unit Size	100 ul
Concentration	1.0 mg/ml
Storage	Store at 4C. Do not freeze.
Clonality	Polyclonal
Preservative	0.09% Sodium Azide
Isotype	IgG
Purity	Immunogen affinity purified
Buffer	Tris-Citrate/Phosphate (pH 7.0 - 8.0)

Product Description	
Host	Rabbit
Gene ID	83461
Gene Symbol	CDCA3
Species	Human
Immunogen	The immunogen recognized by this antibody maps to a region between residue 230 and 268 of human cell division cycle associated 3 (trigger of mitotic entry 1) using the numbering given in entry NP_112589.1 (GenelD 83461).

Product Application Details	
Applications	Immunoprecipitation
Recommended Dilutions	Immunoprecipitation 1:10-1:500
Application Notes	This antibody is not recommended for Western Blot analysis.

**Images**

Immunoprecipitation: CDCA3 Antibody [NB100-74622] - Detection of Human CDCA3/TOME1 by Western Blot of Immunoprecipitates. Samples: Whole cell lysate (1 mg for IP, 20% of IP loaded) from HeLa cells. Antibodies: Affinity purified rabbit anti-CDCA3/TOME1 antibody NB100-74622 used for IP at 3 mcg/mg lysate. CDCA3/TOME1 was also immunoprecipitated by rabbit anti-CDCA3/TOME1 antibody NB100-74621, which recognizes an upstream epitope. Detection: Chemiluminescence with an exposure time of 3 minutes.





### **Novus Biologicals USA**

10730 E. Briarwood Avenue  
Centennial, CO 80112  
USA

Phone: 303.730.1950  
Toll Free: 1.888.506.6887  
Fax: 303.730.1966  
novus@novusbio.com

### **Bio-Techne Canada**

21 Canmotor Ave  
Toronto, ON M8Z 4E6  
Canada

Phone: 905.827.6400  
Toll Free: 855.668.8722  
Fax: 905.827.6402  
canada.inquires@bio-techne.com

### **Bio-Techne Ltd**

19 Barton Lane  
Abingdon Science Park  
Abingdon, OX14 3NB, United Kingdom

Phone: (44) (0) 1235 529449  
Free Phone: 0800 37 34 15  
Fax: (44) (0) 1235 533420  
info.EMEA@bio-techne.com

### **General Contact Information**

www.novusbio.com  
Technical Support: technical@novusbio.com  
Orders: orders@novusbio.com  
General: novus@novusbio.com

### **Limitations**

This product is for research use only and is not approved for use in humans or in clinical diagnosis. Primary Antibodies are guaranteed for 1 year from date of receipt.

For more information on our 100% guarantee, please visit [www.novusbio.com/guarantee](http://www.novusbio.com/guarantee)

Earn gift cards/discounts by submitting a review: [www.novusbio.com/reviews/submit/NB100-74622](http://www.novusbio.com/reviews/submit/NB100-74622)

Earn gift cards/discounts by submitting a publication using this product:  
[www.novusbio.com/publications](http://www.novusbio.com/publications)

