

# Product Datasheet

## ECM29 Antibody NB100-74407

Unit Size: 100 uL

Store at -20C. Avoid freeze-thaw cycles.

[www.novusbio.com](http://www.novusbio.com)



[technical@novusbio.com](mailto:technical@novusbio.com)

Protocols, Publications, Related Products, Reviews, Research Tools and Images at:  
[www.novusbio.com/NB100-74407](http://www.novusbio.com/NB100-74407)

Updated 5/13/2021 v.20.1

Earn rewards for product  
reviews and publications.

Submit a publication at [www.novusbio.com/publications](http://www.novusbio.com/publications)

Submit a review at [www.novusbio.com/reviews/destination/NB100-74407](http://www.novusbio.com/reviews/destination/NB100-74407)



**NB100-74407**

ECM29 Antibody

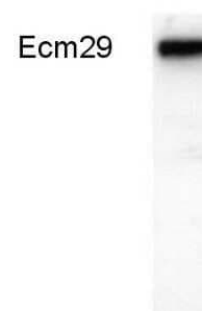
Product Information	
Unit Size	100 uL
Concentration	This product is unpurified. The exact concentration of antibody is not quantifiable.
Storage	Store at -20C. Avoid freeze-thaw cycles.
Clonality	Polyclonal
Preservative	0.05% Sodium Azide
Isotype	IgG
Purity	Unpurified
Buffer	Whole serum
Product Description	
Host	Rabbit
Gene ID	23392
Gene Symbol	KIAA0368
Species	Human, Mouse
Specificity/Sensitivity	Ecm29
Immunogen	Synthetic peptide corresponding to the C-terminal residues R(1821) P E L Q E K A A L L K K T L E N L E(1839) of human Ecm29.
Product Application Details	
Applications	Western Blot, Immunocytochemistry/ Immunofluorescence, Immunohistochemistry, Immunohistochemistry-Paraffin
Recommended Dilutions	Western Blot 1:200, Immunohistochemistry 1:10 - 1:500, Immunocytochemistry/ Immunofluorescence 1:200, Immunohistochemistry-Paraffin 1:10 - 1:500
Application Notes	WB: Analysis of HeLa cell extracts. Detects an approx. 205 kDa protein representing Ecm29.



## Images

Western Blot: ECM29 Antibody [NB100-74407] - Analysis of Ecm29 in HeLa cells.

Fig. 1



Western Blot: ECM29 Antibody [NB100-74407] - Figure 1 shows a Western blot of Ecm29 in HeLa cells. Figure 2 shows immunofluorescent staining of Ecm29 in HeLa cells.

Fig. 1

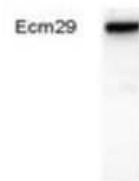
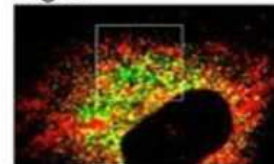


Fig. 2





### **Novus Biologicals USA**

10730 E. Briarwood Avenue  
Centennial, CO 80112  
USA  
Phone: 303.730.1950  
Toll Free: 1.888.506.6887  
Fax: 303.730.1966  
nb-customerservice@bio-techne.com

### **Bio-Techne Canada**

21 Canmotor Ave  
Toronto, ON M8Z 4E6  
Canada  
Phone: 905.827.6400  
Toll Free: 855.668.8722  
Fax: 905.827.6402  
canada.inquires@bio-techne.com

### **Bio-Techne Ltd**

19 Barton Lane  
Abingdon Science Park  
Abingdon, OX14 3NB, United Kingdom  
Phone: (44) (0) 1235 529449  
Free Phone: 0800 37 34 15  
Fax: (44) (0) 1235 533420  
info.EMEA@bio-techne.com

### **General Contact Information**

[www.novusbio.com](http://www.novusbio.com)  
Technical Support: nb-technical@bio-techne.com  
Orders: nb-customerservice@bio-techne.com  
General: novus@novusbio.com

### **Limitations**

This product is for research use only and is not approved for use in humans or in clinical diagnosis. Primary Antibodies are guaranteed for 1 year from date of receipt.

For more information on our 100% guarantee, please visit [www.novusbio.com/guarantee](http://www.novusbio.com/guarantee)

Earn gift cards/discounts by submitting a review: [www.novusbio.com/reviews/submit/NB100-74407](http://www.novusbio.com/reviews/submit/NB100-74407)

Earn gift cards/discounts by submitting a publication using this product:  
[www.novusbio.com/publications](http://www.novusbio.com/publications)

