

Product Datasheet

CRMP5 Antibody (CR-1) NB100-74395

Unit Size: 100uL

Store at -20C. Avoid freeze-thaw cycles.

www.novusbio.com



technical@novusbio.com

Protocols, Publications, Related Products, Reviews, Research Tools and Images at:
www.novusbio.com/NB100-74395

Updated 5/13/2021 v.20.1

Earn rewards for product
reviews and publications.

Submit a publication at www.novusbio.com/publications

Submit a review at www.novusbio.com/reviews/destination/NB100-74395



NB100-74395

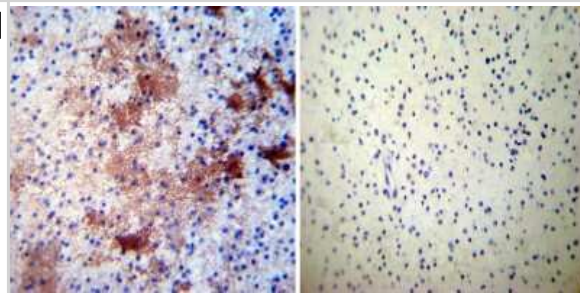
CRMP5 Antibody (CR-1)

Product Information	
Unit Size	100uL
Concentration	This product is unpurified. The exact concentration of antibody is not quantifiable.
Storage	Store at -20C. Avoid freeze-thaw cycles.
Clonality	Monoclonal
Clone	CR-1
Preservative	0.05% Sodium Azide
Isotype	IgG1
Purity	Unpurified
Buffer	Ascites
Product Description	
Host	Rat
Gene ID	56896
Gene Symbol	DPYSL5
Species	Human, Rat, Bovine
Specificity/Sensitivity	CRMP5 (CR-1)
Immunogen	CRMP5 protein purified from human brain.
Product Application Details	
Applications	Western Blot, Immunocytochemistry/ Immunofluorescence, Immunohistochemistry, Immunohistochemistry-Frozen, Immunohistochemistry-Paraffin, Single Cell Western
Recommended Dilutions	Western Blot 1:1000 - 1:2000, Immunohistochemistry 1:2000, Immunocytochemistry/ Immunofluorescence 2 - 3 ug/mL, Immunohistochemistry-Paraffin 1:2000, Immunohistochemistry-Frozen 1:2000, Single Cell Western
Application Notes	WB: Detects an approx. 62 kDa protein representing human CRMP5 from brain extract.

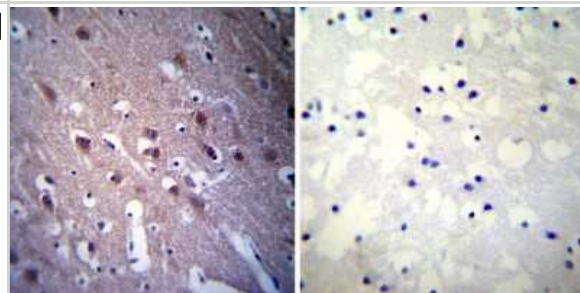


Images

Immunohistochemistry-Paraffin: CRMP5 Antibody (CR-1) [NB100-74395]
- Biopsies of deparaffinized Human glioma tissue.



Immunohistochemistry-Paraffin: CRMP5 Antibody (CR-1) [NB100-74395]
- Biopsies of deparaffinized Human brain tissue.





Novus Biologicals USA

10730 E. Briarwood Avenue
Centennial, CO 80112
USA
Phone: 303.730.1950
Toll Free: 1.888.506.6887
Fax: 303.730.1966
nb-customerservice@bio-techne.com

Bio-Techne Canada

21 Canmotor Ave
Toronto, ON M8Z 4E6
Canada
Phone: 905.827.6400
Toll Free: 855.668.8722
Fax: 905.827.6402
canada.inquires@bio-techne.com

Bio-Techne Ltd

19 Barton Lane
Abingdon Science Park
Abingdon, OX14 3NB, United Kingdom
Phone: (44) (0) 1235 529449
Free Phone: 0800 37 34 15
Fax: (44) (0) 1235 533420
info.EMEA@bio-techne.com

General Contact Information

www.novusbio.com
Technical Support: nb-technical@bio-techne.com
Orders: nb-customerservice@bio-techne.com
General: novus@novusbio.com

Limitations

This product is for research use only and is not approved for use in humans or in clinical diagnosis. Primary Antibodies are guaranteed for 1 year from date of receipt.

For more information on our 100% guarantee, please visit www.novusbio.com/guarantee

Earn gift cards/discounts by submitting a review: www.novusbio.com/reviews/submit/NB100-74395

Earn gift cards/discounts by submitting a publication using this product:
www.novusbio.com/publications

