

Product Datasheet

LYVE-1 Antibody [DyLight 650] NB100-725C

Unit Size: 0.1 ml

Store at 4C in the dark.

www.novusbio.com



technical@novusbio.com

Protocols, Publications, Related Products, Reviews, Research Tools and Images at:
www.novusbio.com/NB100-725C

Updated 10/23/2024 v.20.1

Earn rewards for product
reviews and publications.

Submit a publication at www.novusbio.com/publications

Submit a review at www.novusbio.com/reviews/destination/NB100-725C



NB100-725C

LYVE-1 Antibody [DyLight 650]

Product Information

Unit Size	0.1 ml
Concentration	Please see the vial label for concentration. If unlisted please contact technical services.
Storage	Store at 4C in the dark.
Clonality	Polyclonal
Preservative	0.05% Sodium Azide
Isotype	IgG
Conjugate	DyLight 650
Purity	Immunogen affinity purified
Buffer	50mM Sodium Borate
Target Molecular Weight	35 kDa

Product Description

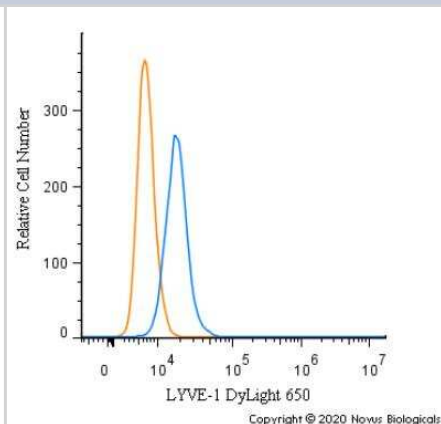
Host	Rabbit
Gene ID	10894
Gene Symbol	LYVE1
Species	Human, Mouse, Rat
Marker	Lymphatic Vessel Marker
Immunogen	This LYVE-1 Antibody was developed against a synthetic peptide made to a C-terminal portion of the mouse LYVE1 protein sequence (between residues 250-318). [UniProt# Q8BHC0]
Notes	DyLight (R) is a trademark of Thermo Fisher Scientific Inc. and its subsidiaries.

Product Application Details

Applications	Western Blot, Flow Cytometry, Flow (Intracellular), Immunohistochemistry, Immunohistochemistry-Frozen, Immunohistochemistry-Paraffin
Recommended Dilutions	Western Blot, Flow Cytometry, Immunohistochemistry, Immunohistochemistry-Paraffin, Immunohistochemistry-Frozen, Flow (Intracellular)
Application Notes	Optimal dilution of this antibody should be experimentally determined.

Images

Flow Cytometry: LYVE-1 Antibody [DyLight 650] [NB100-725C] - An intracellular stain was performed on K562 cells with LYVE-1 Antibody NB100-725C (blue) and a matched isotype control (orange). Cells were fixed with 4% PFA and then permeabilized with 0.1% saponin. Cells were incubated in an antibody dilution of 2.5 ug/mL for 30 minutes at room temperature. Both antibodies were conjugated to DyLight 650.





Novus Biologicals USA

10730 E. Briarwood Avenue
Centennial, CO 80112
USA

Phone: 303.730.1950

Toll Free: 1.888.506.6887

Fax: 303.730.1966

nb-customerservice@bio-techne.com

Bio-Techne Canada

21 Canmotor Ave
Toronto, ON M8Z 4E6
Canada

Phone: 905.827.6400

Toll Free: 855.668.8722

Fax: 905.827.6402

canada.inquires@bio-techne.com

Bio-Techne Ltd

19 Barton Lane
Abingdon Science Park
Abingdon, OX14 3NB, United Kingdom

Phone: (44) (0) 1235 529449

Free Phone: 0800 37 34 15

Fax: (44) (0) 1235 533420

info.EMEA@bio-techne.com

General Contact Information

www.novusbio.com

Technical Support: nb-technical@bio-techne.com

Orders: nb-customerservice@bio-techne.com

General: novus@novusbio.com

Products Related to NB100-725C

NBP2-24891C	Rabbit IgG Isotype Control [DyLight 650]
NB100-725PEP	LYVE-1 Antibody Blocking Peptide
210-TA-005	TNF-alpha [Unconjugated]
NB100-939-1Pack	LYVE-1 Antibody Pack

Limitations

This product is for research use only and is not approved for use in humans or in clinical diagnosis. Primary Antibodies are guaranteed for 1 year from date of receipt.

For more information on our 100% guarantee, please visit www.novusbio.com/guarantee

Earn gift cards/discounts by submitting a review: www.novusbio.com/reviews/submit/NB100-725C

Earn gift cards/discounts by submitting a publication using this product:

www.novusbio.com/publications

