

# Product Datasheet

## alpha Tubulin Antibody (DM1A) [Biotin] NB100-690B

Unit Size: 0.1 ml

Store at 4C in the dark.

[www.novusbio.com](http://www.novusbio.com)



[technical@novusbio.com](mailto:technical@novusbio.com)

Reviews: 1

Protocols, Publications, Related Products, Reviews, Research Tools and Images at:  
[www.novusbio.com/NB100-690B](http://www.novusbio.com/NB100-690B)

Updated 4/13/2025 v.20.1

Earn rewards for product  
reviews and publications.

Submit a publication at [www.novusbio.com/publications](http://www.novusbio.com/publications)

Submit a review at [www.novusbio.com/reviews/destination/NB100-690B](http://www.novusbio.com/reviews/destination/NB100-690B)



**NB100-690B**

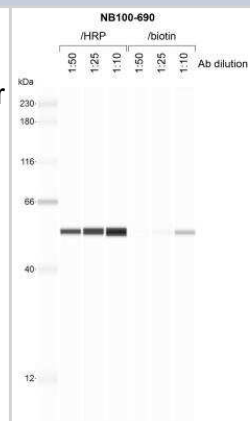
alpha Tubulin Antibody (DM1A) [Biotin]

Product Information	
Unit Size	0.1 ml
Concentration	Please see the vial label for concentration. If unlisted please contact technical services.
Storage	Store at 4C in the dark.
Clonality	Monoclonal
Clone	DM1A
Preservative	0.05% Sodium Azide
Isotype	IgG1 Kappa
Conjugate	Biotin
Purity	Protein G purified
Buffer	PBS
Product Description	
Host	Mouse
Gene ID	7846
Gene Symbol	TUBA1A
Species	Human, Mouse, Rat, Porcine, Avian, Bovine, Canine, Chicken, Chinese Hamster, Drosophila, Fungi, Guinea Pig, Goat, Hamster, Parasite, Primate, Monkey, Rabbit, Xenopus, Yeast
Reactivity Notes	Use in Mouse reported in scientific literature (PMID:34871568) Use in Mouse reported in scientific literature (PMID:34533563). Yeast reactivity reported in scientific literature (PMID: 25126732). Goat reactivity reported in scientific literature (PMID:31805146). Will likely react with all mammals.
Marker	Microtubule Marker
Specificity/Sensitivity	This alpha Tubulin Antibody (DM1A) does not cross-react with beta Tubulin.
Immunogen	This alpha Tubulin Antibody (DM1A) was developed against native chicken brain microtubules.
Product Application Details	
Applications	Western Blot, Flow Cytometry, Flow (Intracellular), Immunocytochemistry/Immunofluorescence, Immunohistochemistry, Immunohistochemistry-Frozen, Immunohistochemistry-Paraffin, Immunomicroscopy, Immunoprecipitation, CyTOF-ready
Recommended Dilutions	Western Blot, Flow Cytometry, Immunohistochemistry, Immunocytochemistry/Immunofluorescence, Immunoprecipitation, Immunohistochemistry-Paraffin, Immunohistochemistry-Frozen, Immunomicroscopy, Flow (Intracellular), CyTOF-ready
Application Notes	Optimal dilution of this antibody should be experimentally determined.

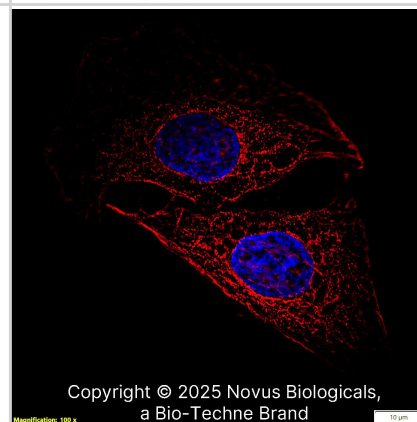


## Images

Simple Western: alpha Tubulin Antibody (DM1A) [Biotin] [NB100-690B] - 1 mg/mL human SVG-A whole cell lysate probed with the indicated concentration of each conjugated antibody. Image from verified customer review.



Alpha Tubulin (DM1A) was detected in immersion fixed U-2 OS human osteosarcoma cell line using Mouse anti-Alpha Tubulin (DM1A) Protein G Purified Monoclonal Antibody conjugated to Biotin (Catalog # NB100-690B) at 2 µg/mL overnight at 4C. Cells were stained using Streptavidin conjugated to DyLight 550 (red) and counterstained with DAPI (blue). Cells were imaged using a 100X objective and digitally deconvolved.





### **Novus Biologicals USA**

10730 E. Briarwood Avenue  
Centennial, CO 80112  
USA  
Phone: 303.730.1950  
Toll Free: 1.888.506.6887  
Fax: 303.730.1966  
nb-customerservice@bio-techne.com

### **Bio-Techne Canada**

21 Canmotor Ave  
Toronto, ON M8Z 4E6  
Canada  
Phone: 905.827.6400  
Toll Free: 855.668.8722  
Fax: 905.827.6402  
canada.inquires@bio-techne.com

### **Bio-Techne Ltd**

19 Barton Lane  
Abingdon Science Park  
Abingdon, OX14 3NB, United Kingdom  
Phone: (44) (0) 1235 529449  
Free Phone: 0800 37 34 15  
Fax: (44) (0) 1235 533420  
info.EMEA@bio-techne.com

### **General Contact Information**

www.novusbio.com  
Technical Support: nb-technical@bio-techne.com  
Orders: nb-customerservice@bio-techne.com  
General: novus@novusbio.com

### **Products Related to NB100-690B**

---

NBP2-29370	Streptavidin Native Protein
IC002B	Mouse IgG1 Isotype Control (11711) [Biotin]
NB100-690H	alpha Tubulin Antibody (DM1A) [HRP]
H00007846-Q01-10ug	Recombinant Human alpha Tubulin GST (N-Term) Protein

---

### **Limitations**

This product is for research use only and is not approved for use in humans or in clinical diagnosis. Primary Antibodies are guaranteed for 1 year from date of receipt.

For more information on our 100% guarantee, please visit [www.novusbio.com/guarantee](http://www.novusbio.com/guarantee)

Earn gift cards/discounts by submitting a review: [www.novusbio.com/reviews/submit/NB100-690B](http://www.novusbio.com/reviews/submit/NB100-690B)

Earn gift cards/discounts by submitting a publication using this product:  
[www.novusbio.com/publications](http://www.novusbio.com/publications)

