

Product Datasheet

WIPF1/WIP Antibody NB100-68147

Unit Size: 0.1 mg

Store at -20C. Avoid freeze-thaw cycles.

www.novusbio.com



technical@novusbio.com

Publications: 1

Protocols, Publications, Related Products, Reviews, Research Tools and Images at:
www.novusbio.com/NB100-68147

Updated 12/6/2022 v.20.1

Earn rewards for product
reviews and publications.

Submit a publication at www.novusbio.com/publications

Submit a review at www.novusbio.com/reviews/destination/NB100-68147



NB100-68147**WIPF1/WIP Antibody**

Product Information	
Unit Size	0.1 mg
Concentration	0.5 mg/ml
Storage	Store at -20C. Avoid freeze-thaw cycles.
Clonality	Polyclonal
Preservative	0.02% Sodium Azide
Isotype	IgG
Purity	Immunogen affinity purified
Buffer	Tris saline (20 mM Tris pH 7.3, 150 mM NaCl), 0.5% BSA

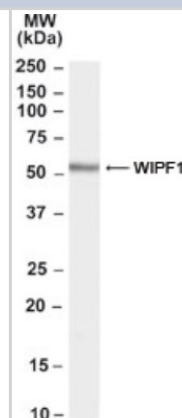
Product Description	
Host	Goat
Gene ID	7456
Gene Symbol	WIPF1
Species	Human
Specificity/Sensitivity	Both variants represent identical proteins
Immunogen	Peptide with sequence C-KLARNESRSGSNRRE corresponding to C-Terminus according to NP_001070737.1.

Product Application Details	
Applications	Western Blot, Peptide ELISA
Recommended Dilutions	Western Blot 0.03 - 0.1 ug/ml, Peptide ELISA Detection limit 1:64000
Application Notes	WB: Approx. 55 kDa band observed in human lymph node, spleen and tonsil lysates (calculated MW of 51.3 kDa band according to NP_003378.3 and NP_001070737.1). In transfected HEK293 transiently expressing WIPF1 a band of approx. 55 kDa is observed. This band is not observed in the non-transfected HEK293.

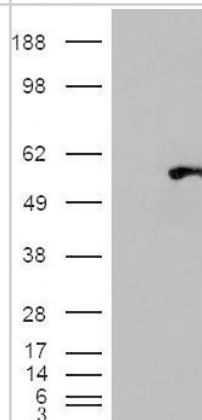


Images

Western Blot: WIPF1/WIP Antibody [NB100-68147] - Analysis of WIPF1/WIP antibody using this antibody at 0.03 ug/ml in Human Tonsil. Primary incubation was 1 hour. Detected by chemiluminescence.



Western Blot: WIPF1/WIP Antibody [NB100-68147] - HEK293 overexpressing WIPF1 and probed with (mock transfection in first lane).



Publications

Massarwa R, Carmon S, Shilo BZ, Schejter ED. WIP/WASp-based actin-polymerization machinery is essential for myoblast fusion in *Drosophila*. *Dev Cell* 2007 Apr [PMID: 17419994]



Novus Biologicals USA

10730 E. Briarwood Avenue
Centennial, CO 80112
USA

Phone: 303.730.1950
Toll Free: 1.888.506.6887
Fax: 303.730.1966
novus@novusbio.com

Bio-Techne Canada

21 Canmotor Ave
Toronto, ON M8Z 4E6
Canada

Phone: 905.827.6400
Toll Free: 855.668.8722
Fax: 905.827.6402
canada.inquires@bio-techne.com

Bio-Techne Ltd

19 Barton Lane
Abingdon Science Park
Abingdon, OX14 3NB, United Kingdom
Phone: (44) (0) 1235 529449
Free Phone: 0800 37 34 15
Fax: (44) (0) 1235 533420
info.EMEA@bio-techne.com

General Contact Information

www.novusbio.com
Technical Support: technical@novusbio.com
Orders: orders@novusbio.com
General: novus@novusbio.com

Limitations

This product is for research use only and is not approved for use in humans or in clinical diagnosis. Primary Antibodies are guaranteed for 1 year from date of receipt.

For more information on our 100% guarantee, please visit www.novusbio.com/guarantee

Earn gift cards/discounts by submitting a review: www.novusbio.com/reviews/submit/NB100-68147

Earn gift cards/discounts by submitting a publication using this product:
www.novusbio.com/publications

