

# Product Datasheet

## BCAS1 Antibody - BSA Free

### NB100-681

Unit Size: 0.1 mg

Store at 4C short term. Aliquot and store at -20C long term. Avoid freeze-thaw cycles.

[www.novusbio.com](http://www.novusbio.com)



[technical@novusbio.com](mailto:technical@novusbio.com)

#### Publications: 1

Protocols, Publications, Related Products, Reviews, Research Tools and Images at:  
[www.novusbio.com/NB100-681](http://www.novusbio.com/NB100-681)

Updated 4/13/2025 v.20.1

Earn rewards for product  
reviews and publications.

Submit a publication at [www.novusbio.com/publications](http://www.novusbio.com/publications)

Submit a review at [www.novusbio.com/reviews/destination/NB100-681](http://www.novusbio.com/reviews/destination/NB100-681)



**NB100-681**

BCAS1 Antibody - BSA Free

**Product Information**

<b>Unit Size</b>	0.1 mg
<b>Concentration</b>	1 mg/ml
<b>Storage</b>	Store at 4C short term. Aliquot and store at -20C long term. Avoid freeze-thaw cycles.
<b>Clonality</b>	Polyclonal
<b>Preservative</b>	0.02% Sodium Azide
<b>Isotype</b>	IgG
<b>Purity</b>	Immunogen affinity purified
<b>Buffer</b>	PBS

**Product Description**

<b>Host</b>	Rabbit
<b>Gene ID</b>	8537
<b>Gene Symbol</b>	BCAS1
<b>Species</b>	Human
<b>Specificity/Sensitivity</b>	Reacts with human NABC1. Reactivity to other species unknown.
<b>Immunogen</b>	Reacts with residues 532-550 [DTNSLQNGDKLQKRPEKRQ] of human NABC1.

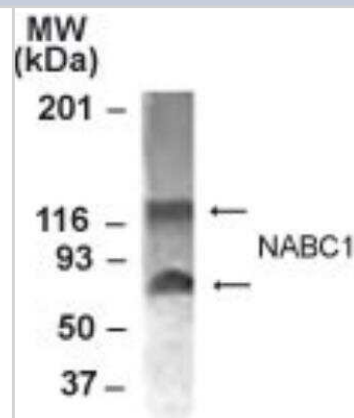
**Product Application Details**

<b>Applications</b>	Western Blot, Simple Western
<b>Recommended Dilutions</b>	Western Blot 1:100-1:2000, Simple Western 1:5000
<b>Application Notes</b>	<p>This antibody may be used for Western blot analysis where 2 bands are seen at ~120 and ~80 kDa. NABC1 is a 60 kDa protein; however it forms dimers, which are readily detectable in MCF-7 cells. No other applications have been tested. Suggested Working Dilutions:* Western blot - 1:500 to 1:1,000 *The investigator should determine the optimal dilution for a specific application.</p> <p>In Simple Western only 10 - 15 uL of the recommended dilution is used per data point. See <a href="#">Simple Western Antibody Database</a> for Simple Western validation: Tested in MCF-7 lysate 0.05 mg/mL, separated by Size, antibody dilution of 1:5000, apparent MW was 57 kDa. Separated by Size-Wes, Sally Sue/Peggy Sue.</p>

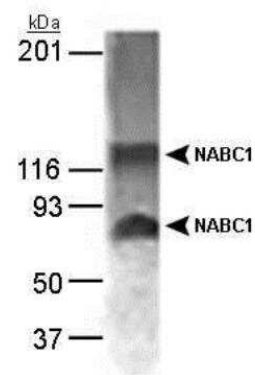


## Images

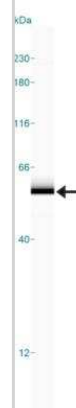
Western Blot: BCAS1 Antibody [NB100-681] - Western blot analysis of BCAS1 from 15 ug of MCF-7 cell lysate using NB100-681 at 1:1000 dilution. BCAS1 is a 60 kDa protein: however it forms homodimers, which are detected in MCF-7 cells.



Western Blot: BCAS1 Antibody [NB100-681] - Detection of NABC1 in MCF-7 whole cell lysate (15 ug) using a 1:1,000 dilution of NB 100-681.



Simple Western: BCAS1 Antibody [NB100-681] - Simple Western lane view shows a specific band for BCAS1 in 0.05 mg/ml of MCF-7 lysate. This experiment was performed under reducing conditions using the 12-230 kDa separation system.



## Publications

Krista McFarland, Tracy A. Spalding, David Hubbard, Jian-Nong Ma, Roger Olsson, Ethan S. Burstein Low Dose Bexarotene Treatment Rescues Dopamine Neurons and Restores Behavioral Function in Models of Parkinson's Disease ACS Chemical Neuroscience 2013-11-20 [PMID: 24117438]



### **Novus Biologicals USA**

10730 E. Briarwood Avenue  
Centennial, CO 80112  
USA  
Phone: 303.730.1950  
Toll Free: 1.888.506.6887  
Fax: 303.730.1966  
nb-customerservice@bio-techne.com

### **Bio-Techne Canada**

21 Canmotor Ave  
Toronto, ON M8Z 4E6  
Canada  
Phone: 905.827.6400  
Toll Free: 855.668.8722  
Fax: 905.827.6402  
canada.inquires@bio-techne.com

### **Bio-Techne Ltd**

19 Barton Lane  
Abingdon Science Park  
Abingdon, OX14 3NB, United Kingdom  
Phone: (44) (0) 1235 529449  
Free Phone: 0800 37 34 15  
Fax: (44) (0) 1235 533420  
info.EMEA@bio-techne.com

### **General Contact Information**

www.novusbio.com  
Technical Support: nb-technical@bio-techne.com  
Orders: nb-customerservice@bio-techne.com  
General: novus@novusbio.com

### **Products Related to NB100-681**

---

NB820-59465	MCF-7 Whole Cell Lysate
HAF008	Goat anti-Rabbit IgG Secondary Antibody [HRP]
NB7160	Goat anti-Rabbit IgG (H+L) Secondary Antibody [HRP]
NBP2-24891	Rabbit IgG Isotype Control

---

### **Limitations**

This product is for research use only and is not approved for use in humans or in clinical diagnosis. Primary Antibodies are guaranteed for 1 year from date of receipt.

For more information on our 100% guarantee, please visit [www.novusbio.com/guarantee](http://www.novusbio.com/guarantee)

Earn gift cards/discounts by submitting a review: [www.novusbio.com/reviews/submit/NB100-681](http://www.novusbio.com/reviews/submit/NB100-681)

Earn gift cards/discounts by submitting a publication using this product:  
[www.novusbio.com/publications](http://www.novusbio.com/publications)

