

# Product Datasheet

## 14-3-3 beta/alpha [p Ser58] Antibody NB100-668

Unit Size: 0.1 ml

Store at -20C. Avoid freeze-thaw cycles.

[www.novusbio.com](http://www.novusbio.com)



[technical@novusbio.com](mailto:technical@novusbio.com)

Protocols, Publications, Related Products, Reviews, Research Tools and Images at:  
[www.novusbio.com/NB100-668](http://www.novusbio.com/NB100-668)

Updated 2/5/2017 v.20.1

Earn rewards for product  
reviews and publications.

Submit a publication at [www.novusbio.com/publications](http://www.novusbio.com/publications)

Submit a review at [www.novusbio.com/reviews/destination/NB100-668](http://www.novusbio.com/reviews/destination/NB100-668)



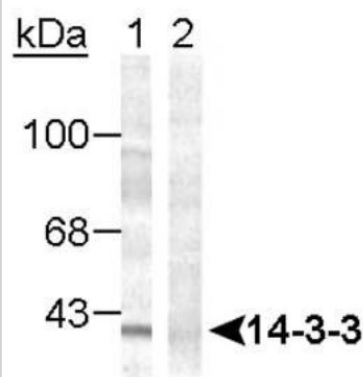
**NB100-668**

14-3-3 beta/alpha [p Ser58] Antibody

Product Information	
<b>Unit Size</b>	0.1 ml
<b>Concentration</b>	Please see the vial label for concentration. If unlisted please contact technical services.
<b>Storage</b>	Store at -20C. Avoid freeze-thaw cycles.
<b>Clonality</b>	Polyclonal
<b>Preservative</b>	No Preservative
<b>Purity</b>	Immunogen affinity purified
<b>Buffer</b>	10mM HEPES (pH 7.5), 0.15M NaCl, 0.1 mg/ml BSA and 50% Glycerol
Product Description	
<b>Host</b>	Rabbit
<b>Gene ID</b>	7529
<b>Gene Symbol</b>	YWHAB
<b>Species</b>	Human, Rat
<b>Reactivity Notes</b>	Tested in Human and Rat. Reactivity assumed based on 100% sequence homology: Bovine, Canine, Chicken, Mouse, Primate, Sheep, Xenopus and Zebrafish.
<b>Specificity/Sensitivity</b>	Specific for the ~29k 14-3-3 beta/alpha protein phosphorylated at Ser58. Immunolabeling is blocked by the phosphopeptide used as antigen but not by the corresponding dephosphopeptide.
<b>Immunogen</b>	Synthetic phospho-peptide corresponding to amino acid residues surrounding Ser58 conjugated to KLH
Product Application Details	
<b>Applications</b>	Western Blot, Immunohistochemistry, Immunohistochemistry-Frozen, Immunohistochemistry-Paraffin
<b>Recommended Dilutions</b>	Western Blot 1:1000, Immunohistochemistry 1:10-1:500, Immunohistochemistry-Paraffin 1:10-1:500, Immunohistochemistry-Frozen 1:10-1:500
<b>Application Notes</b>	This antibody has been tested in Western blot on rat brain hippocampal lysate, detecting a band ~29 kDa. No other applications have been tested. *The investigator should determine the optimal working dilution for a specific application.

**Images**

Western Blot: 14-3-3 beta/alpha [p Ser58] Antibody [NB100-668] - Rat brainstem lysate showing specific immuno-labeling of the ~29k 14-3-3 beta/alpha protein at phospho Ser58 (Control). Immunolabeling is blocked by the phosphopeptide used as the antigen (Phos-pep).





### **Novus Biologicals USA**

10730 E. Briarwood Avenue  
Centennial, CO 80112  
USA

Phone: 303.730.1950  
Toll Free: 1.888.506.6887  
Fax: 303.730.1966  
novus@novusbio.com

### **Novus Biologicals Canada**

461 North Service Road West, Unit B37  
Oakville, ON L6M 2V5  
Canada

Phone: 905.827.6400  
Toll Free: 855.668.8722  
Fax: 905.827.6402  
canada@novusbio.com

### **Novus Biologicals Europe**

19 Barton Lane  
Abingdon Science Park  
Abingdon, OX14 3NB, United Kingdom

Phone: (44) (0) 1235 529449  
Free Phone: 0800 37 34 15  
Fax: (44) (0) 1235 533420  
info@bio-techne.com

### **General Contact Information**

www.novusbio.com  
Technical Support: technical@novusbio.com  
Orders: orders@novusbio.com  
General: novus@novusbio.com

### **Limitations**

This product is for research use only and is not approved for use in humans or in clinical diagnosis. Primary Antibodies are guaranteed for 1 year from date of receipt.

For more information on our 100% guarantee, please visit [www.novusbio.com/guarantee](http://www.novusbio.com/guarantee)

Earn gift cards/discounts by submitting a review: [www.novusbio.com/reviews/submit/NB100-668](http://www.novusbio.com/reviews/submit/NB100-668)

Earn gift cards/discounts by submitting a publication using this product:  
[www.novusbio.com/publications](http://www.novusbio.com/publications)

