

Product Datasheet

ACE-2 Antibody NB100-66559

Unit Size: 0.1 mg

Store at 4C short term. Aliquot and store at -20C long term. Avoid freeze-thaw cycles.

www.novusbio.com



technical@novusbio.com

Protocols, Publications, Related Products, Reviews, Research Tools and Images at:
www.novusbio.com/NB100-66559

Updated 4/20/2020 v.20.1

Earn rewards for product
reviews and publications.

Submit a publication at www.novusbio.com/publications

Submit a review at www.novusbio.com/reviews/destination/NB100-66559



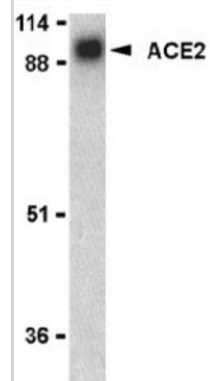
NB100-66559

ACE-2 Antibody

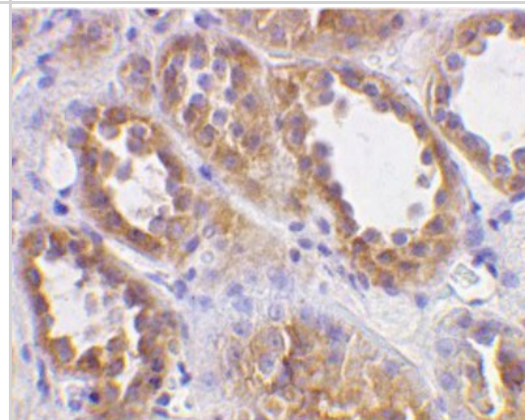
| Product Information | |
|-----------------------------|---|
| Unit Size | 0.1 mg |
| Concentration | 1.0 mg/ml |
| Storage | Store at 4C short term. Aliquot and store at -20C long term. Avoid freeze-thaw cycles. |
| Clonality | Polyclonal |
| Preservative | 0.02% Sodium Azide |
| Purity | IgG purified |
| Buffer | PBS |
| Product Description | |
| Host | Rabbit |
| Gene ID | 59272 |
| Gene Symbol | ACE2 |
| Species | Human |
| Reactivity Notes | Human. Not yet tested in other species. |
| Specificity/Sensitivity | NB100-66559 is specific for human Angiotensin-converting enzyme 2 (ACE2). ACE2 is a carboxypeptidase which is expressed in a range of tissues including heart, kidney, testis and the gastrointestinal system. ACE2 is a homologue of ACE (Angiotensin-converting enzyme 1), although it has a distinct catalytic activity. ACE2 catalyzes the cleavage of active angiotensin II into angiotensin 1-7, which may counteract the effects of ACE by increasing vasodilatation. A recent discovery is that ACE2 serves as the cellular entry point for the severe acute respiratory syndrome (SARS) virus, functioning as a receptor for the SARS Spike protein. |
| Immunogen | Synthetic peptide corresponding to a sequence within the amino terminus of human ACE2. |
| Product Application Details | |
| Applications | Western Blot, Immunohistochemistry, Immunohistochemistry-Paraffin |
| Recommended Dilutions | Western Blot Immunohistochemistry-Paraffin, Immunohistochemistry, Immunohistochemistry-Paraffin |

Images

Western Blot: Angiotensin Converting Enzyme 2 Antibody [NB100-66559] Western blot analysis of human kidney lysate probed with Rabbit anti Human ACE2



Immunohistochemistry-Paraffin: Angiotensin Converting Enzyme 2 Antibody [NB100-66559] - Immunohistochemistry-Paraffin: Angiotensin Converting Enzyme 2 Antibody [NB100-66559] Human kidney with Rabbit anti Human ACE2





Novus Biologicals USA

10730 E. Briarwood Avenue
Centennial, CO 80112
USA

Phone: 303.730.1950
Toll Free: 1.888.506.6887
Fax: 303.730.1966
novus@novusbio.com

Novus Biologicals Canada

461 North Service Road West, Unit B37
Oakville, ON L6M 2V5
Canada

Phone: 905.827.6400
Toll Free: 855.668.8722
Fax: 905.827.6402
canada@novusbio.com

Novus Biologicals Europe

19 Barton Lane
Abingdon Science Park
Abingdon, OX14 3NB, United Kingdom

Phone: (44) (0) 1235 529449
Free Phone: 0800 37 34 15
Fax: (44) (0) 1235 533420
info@bio-techne.com

General Contact Information

www.novusbio.com
Technical Support: technical@novusbio.com
Orders: orders@novusbio.com
General: novus@novusbio.com

Limitations

This product is for research use only and is not approved for use in humans or in clinical diagnosis. Primary Antibodies are guaranteed for 1 year from date of receipt.

For more information on our 100% guarantee, please visit www.novusbio.com/guarantee

Earn gift cards/discounts by submitting a review: www.novusbio.com/reviews/submit/NB100-66559

Earn gift cards/discounts by submitting a publication using this product:
www.novusbio.com/publications

