

# Product Datasheet

## CD21 Antibody (LB21) NB100-65323

Unit Size: 0.1 ml

Store at 4C short term. Aliquot and store at -20C long term. Avoid freeze-thaw cycles.

[www.novusbio.com](http://www.novusbio.com)



[technical@novusbio.com](mailto:technical@novusbio.com)

Protocols, Publications, Related Products, Reviews, Research Tools and Images at:  
[www.novusbio.com/NB100-65323](http://www.novusbio.com/NB100-65323)

Updated 3/30/2022 v.20.1

Earn rewards for product  
reviews and publications.

Submit a publication at [www.novusbio.com/publications](http://www.novusbio.com/publications)

Submit a review at [www.novusbio.com/reviews/destination/NB100-65323](http://www.novusbio.com/reviews/destination/NB100-65323)



**NB100-65323**

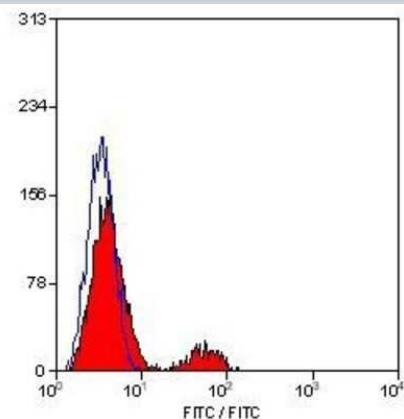
CD21 Antibody (LB21)

Product Information	
Unit Size	0.1 ml
Concentration	0.025 mg/ml
Storage	Store at 4C short term. Aliquot and store at -20C long term. Avoid freeze-thaw cycles.
Clonality	Monoclonal
Clone	LB21
Preservative	0.09% Sodium Azide
Isotype	IgG1
Purity	Protein A or G purified
Buffer	PBS (pH 7.4) and 1.0% BSA
Product Description	
Host	Mouse
Gene ID	1380
Gene Symbol	CR2
Species	Human, Bovine, Feline, Goat, Mustelid, Sheep
Reactivity Notes	Reacts with Human. Cross reacts with Sheep, Mink, Bovine, Goat and Cat.
Marker	Histiocytic Marker
Specificity/Sensitivity	NB100-65323 is a 14kD cell surface glycoprotein expressed by mature B cells and by follicular dendritic cells. The molecule acts as a receptor for complement components C3d, C3dg and iC3b, as well as for Epstein Barr Virus. It forms part of a large signal transduction complex in association with CD19.
Immunogen	Human IM9 cell line.
Product Application Details	
Applications	Flow Cytometry, Immunohistochemistry, Immunohistochemistry-Frozen, Immunoprecipitation
Recommended Dilutions	Flow Cytometry 1:10-1:1000, Immunohistochemistry 1:10-1:500, Immunoprecipitation 1:10-1:500, Immunohistochemistry-Frozen 1:10-1:100
Application Notes	The epitope recognised by this antibody is reported to be sensitive to formaldehyde fixation and tissue processing. The use of acetone fixation for frozen sections is recommended.

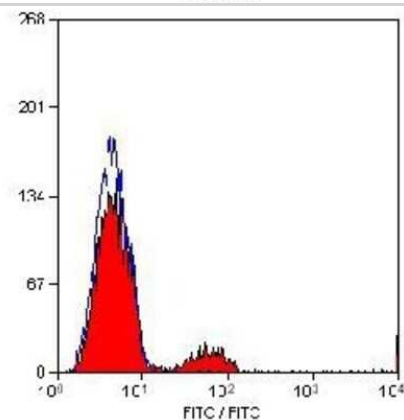


## Images

Flow Cytometry: CD21 Antibody (LB21) [NB100-65323] - Analysis using the FITC conjugate of NB100-65323. Staining of human peripheral blood lymphocytes.



Flow Cytometry: CD21 Antibody (LB21) [NB100-65323] - Staining of human peripheral blood lymphocytes with MOUSE ANTI HUMAN CD21.





### **Novus Biologicals USA**

10730 E. Briarwood Avenue  
Centennial, CO 80112  
USA

Phone: 303.730.1950  
Toll Free: 1.888.506.6887  
Fax: 303.730.1966  
novus@novusbio.com

### **Bio-Techne Canada**

21 Canmotor Ave  
Toronto, ON M8Z 4E6  
Canada

Phone: 905.827.6400  
Toll Free: 855.668.8722  
Fax: 905.827.6402  
canada.inquires@bio-techne.com

### **Bio-Techne Ltd**

19 Barton Lane  
Abingdon Science Park  
Abingdon, OX14 3NB, United Kingdom  
Phone: (44) (0) 1235 529449  
Free Phone: 0800 37 34 15  
Fax: (44) (0) 1235 533420  
info.EMEA@bio-techne.com

### **General Contact Information**

www.novusbio.com  
Technical Support: technical@novusbio.com  
Orders: orders@novusbio.com  
General: novus@novusbio.com

### **Limitations**

This product is for research use only and is not approved for use in humans or in clinical diagnosis. Primary Antibodies are guaranteed for 1 year from date of receipt.

For more information on our 100% guarantee, please visit [www.novusbio.com/guarantee](http://www.novusbio.com/guarantee)

Earn gift cards/discounts by submitting a review: [www.novusbio.com/reviews/submit/NB100-65323](http://www.novusbio.com/reviews/submit/NB100-65323)

Earn gift cards/discounts by submitting a publication using this product:  
[www.novusbio.com/publications](http://www.novusbio.com/publications)

