

# Product Datasheet

## Complement Component C1qA Antibody (004-43.X (3R9/2)) - BSA Free NB100-64729

Unit Size: 0.05 ml

Store at 4C short term. Aliquot and store at -20C long term. Avoid freeze-thaw cycles.

[www.novusbio.com](http://www.novusbio.com)



[technical@novusbio.com](mailto:technical@novusbio.com)

### Publications: 6

Protocols, Publications, Related Products, Reviews, Research Tools and Images at:  
[www.novusbio.com/NB100-64729](http://www.novusbio.com/NB100-64729)

Updated 2/21/2025 v.20.1

Earn rewards for product  
reviews and publications.

Submit a publication at [www.novusbio.com/publications](http://www.novusbio.com/publications)

Submit a review at [www.novusbio.com/reviews/destination/NB100-64729](http://www.novusbio.com/reviews/destination/NB100-64729)



**NB100-64729**

Complement Component C1qA Antibody (004-43.X (3R9/2)) - BSA Free

| Product Information         |  |
|-----------------------------|--|
| Unit Size                   | 0.05 ml  |
| Concentration               | 1.0 mg/ml  |
| Storage                     | Store at 4C short term. Aliquot and store at -20C long term. Avoid freeze-thaw cycles.   |
| Clonality                   | Monoclonal   |
| Clone                       | 004-43.X (3R9/2)   |
| Preservative                | <0.1% Sodium Azide   |
| Isotype                     | IgG1   |
| Purity                      | Protein A purified   |
| Buffer                      | Borate buffered saline   |
| Product Description         |  |
| Host                        | Mouse  |
| Gene ID                     | 712  |
| Gene Symbol                 | C1QA   |
| Species                     | Human  |
| Specificity/Sensitivity     | Recognizes human complement component 1 q (C1q), a 156kDa secreted protein.  |
| Immunogen                   | Globular head domain of C1q, purified from human plasma  |
| Product Application Details |  |
| Applications                | Western Blot, ELISA, Flow Cytometry, Immunohistochemistry, Immunohistochemistry-Frozen   |
| Recommended Dilutions       | Western Blot 1:100-1:2000, Flow Cytometry 1:10-1:1000, ELISA 1:100-1:2000, Immunohistochemistry 1:10-1:500, Immunohistochemistry-Frozen 1:500-1:1000 |

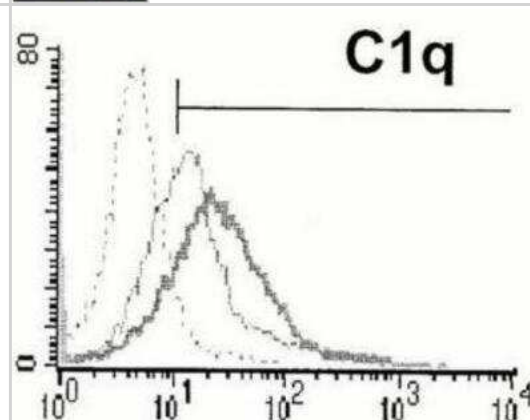


## Images

Immunocytochemistry/Immunofluorescence: Complement Component C1qA Antibody (3R9/2) [NB100-64729] - C4d deposition in graft biopsies of patients with DGF. C4d (green, E) co-localized with C1QA (red, G) at peri-tubular capillary sites (merge, I). TO-PRO-3 (blue) was used to stain nuclei. Original magnifications were (E-J) x630.



Flow Cytometry: Complement Component C1qA Antibody (3R9/2) [NB100-64729]



## Publications

Brandin AC, Meola SD, Mazzaferro EM. et Al. Respiratory arrest following ingestion of wild mushrooms in 3 dogs (2006-2011) J Vet Emerg Crit Care (San Antonio) 2014-08-21 [PMID: 24102893]

Kerr RL, Miller SA, Shoemaker RK et al. New type of Li ion conductor with 3D interconnected nanopores via polymerization of a liquid organic electrolyte-filled lyotropic liquid-crystal assembly. 2010-01-07 [PMID: 19839612]

Castellano, G et al. Therapeutic targeting of classical and lectin pathways of complement protects from ischemia-reperfusion-induced renal damage. 2010-01-01 [PMID: 20150432]

Gershov, D et al. C-Reactive protein binds to apoptotic cells, protects the cells from assembly of the terminal complement components, and sustains an antiinflammatory innate immune response: implications for systemic autoimmunity. 2000-01-01 [PMID: 11067883]

Petry, F. Molecular basis of hereditary C1q deficiency. 1998-01-01 [PMID: 9777412]

Moreno-Vinasco L, Gomberg-Maitl M, Maitl ML et al. Genomic assessment of a multikinase inhibitor, sorafenib, in a rodent model of pulmonary hypertension. Physiol Genomics;33(2):278-91. 2008-04-22 [PMID: 18303084]



### **Novus Biologicals USA**

10730 E. Briarwood Avenue  
Centennial, CO 80112  
USA  
Phone: 303.730.1950  
Toll Free: 1.888.506.6887  
Fax: 303.730.1966  
nb-customerservice@bio-techne.com

### **Bio-Techne Canada**

21 Canmotor Ave  
Toronto, ON M8Z 4E6  
Canada  
Phone: 905.827.6400  
Toll Free: 855.668.8722  
Fax: 905.827.6402  
canada.inquires@bio-techne.com

### **Bio-Techne Ltd**

19 Barton Lane  
Abingdon Science Park  
Abingdon, OX14 3NB, United Kingdom  
Phone: (44) (0) 1235 529449  
Free Phone: 0800 37 34 15  
Fax: (44) (0) 1235 533420  
info.EMEA@bio-techne.com

### **General Contact Information**

www.novusbio.com  
Technical Support: nb-technical@bio-techne.com  
Orders: nb-customerservice@bio-techne.com  
General: novus@novusbio.com

### **Products Related to NB100-64729**

---

|                  |   |
|------------------|---|
| NBL1-08337       | C1q Overexpression Lysate                               |
| HAF007           | Goat anti-Mouse IgG Secondary Antibody [HRP]            |
| NB720-B          | Rabbit anti-Mouse IgG (H+L) Secondary Antibody [Biotin] |
| NBP1-97005-0.5mg | Mouse IgG1 Isotype Control (MG1)                        |

---

### **Limitations**

This product is for research use only and is not approved for use in humans or in clinical diagnosis. Primary Antibodies are guaranteed for 1 year from date of receipt.

For more information on our 100% guarantee, please visit [www.novusbio.com/guarantee](http://www.novusbio.com/guarantee)

Earn gift cards/discounts by submitting a review: [www.novusbio.com/reviews/submit/NB100-64729](http://www.novusbio.com/reviews/submit/NB100-64729)

Earn gift cards/discounts by submitting a publication using this product:  
[www.novusbio.com/publications](http://www.novusbio.com/publications)

