

Product Datasheet

Neutrophil Elastase/ELA2 Antibody (ELA10-101.5 (39A)) - BSA Free NB100-64392

Unit Size: 0.1 mg

Store at 4C short term. Aliquot and store at -20C long term. Avoid freeze-thaw cycles.

www.novusbio.com



technical@novusbio.com

Publications: 2

Protocols, Publications, Related Products, Reviews, Research Tools and Images at:
www.novusbio.com/NB100-64392

Updated 2/21/2025 v.20.1

Earn rewards for product
reviews and publications.

Submit a publication at www.novusbio.com/publications

Submit a review at www.novusbio.com/reviews/destination/NB100-64392



NB100-64392

Neutrophil Elastase/ELA2 Antibody (ELA10-101.5 (39A)) - BSA Free

Product Information

Unit Size	0.1 mg
Concentration	0.5 mg/ml
Storage	Store at 4C short term. Aliquot and store at -20C long term. Avoid freeze-thaw cycles.
Clonality	Monoclonal
Clone	ELA10-101.5 (39A)
Preservative	<0.1% Sodium Azide
Isotype	IgG1
Purity	Protein G purified
Buffer	PBS

Product Description

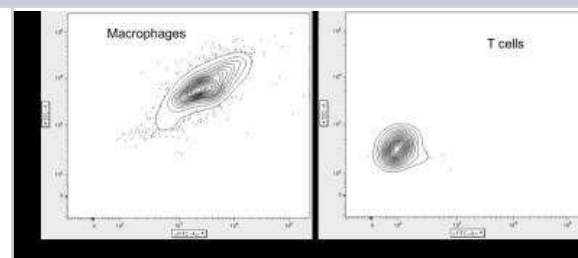
Host	Mouse
Gene ID	1991
Gene Symbol	ELANE
Species	Human
Specificity/Sensitivity	NB100-64392 is specific for human neutrophil elastase.
Immunogen	Elastase from human neutrophils

Product Application Details

Applications	ELISA, Flow Cytometry, Functional
Recommended Dilutions	Flow Cytometry 1:10-1:1000, ELISA 1:100-1:2000, Functional

Images

Flow Cytometry: Neutrophil Elastase/ELA2 Antibody (39A) [NB100-64392] - Leukocytes were isolated from BAL fluid of a CF patient and stained for analysis by flow cytometry. Macrophages were found to have scavenged substantial neutrophil elastase from the airways while minimal was observed on the surface of T cells from the same patient as expected. This antibody works well for staining multiple cell types and obtains reliable fluorescence in the FITC channel. When used for single-stained beads compensation controls, consistent signal is obtained provided that the cytometer is accurately calibrated. One thing to be aware of is that different lots of this antibody have slightly different concentrations. Flow cytometry image submitted by a verified customer review using the Alexa Fluor 488 conjugated format of this antibody.

**Publications**

Davies PL, Maxwell NC, Kotecha S, Spiller OB. Monoclonal anti-neutrophil elastase antibody characterisation: Ability to block function, detect free versus serpin-complexed enzyme and stain intracellular granules. J Immunol Methods. 2008-01-01 [PMID: 18504046]

Durant, S et al. Apoptosis-induced proteinase 3 membrane expression is independent from degranulation. J Leukoc Biol 75: 87-98. 2004-01-01 [PMID: 14525959]





Novus Biologicals USA

10730 E. Briarwood Avenue
Centennial, CO 80112
USA
Phone: 303.730.1950
Toll Free: 1.888.506.6887
Fax: 303.730.1966
nb-customerservice@bio-techne.com

Bio-Techne Canada

21 Canmotor Ave
Toronto, ON M8Z 4E6
Canada
Phone: 905.827.6400
Toll Free: 855.668.8722
Fax: 905.827.6402
canada.inquires@bio-techne.com

Bio-Techne Ltd

19 Barton Lane
Abingdon Science Park
Abingdon, OX14 3NB, United Kingdom
Phone: (44) (0) 1235 529449
Free Phone: 0800 37 34 15
Fax: (44) (0) 1235 533420
info.EMEA@bio-techne.com

General Contact Information

www.novusbio.com
Technical Support: nb-technical@bio-techne.com
Orders: nb-customerservice@bio-techne.com
General: novus@novusbio.com

Products Related to NB100-64392

HAF007	Goat anti-Mouse IgG Secondary Antibody [HRP]
NB720-B	Rabbit anti-Mouse IgG (H+L) Secondary Antibody [Biotin]
NBP1-97005-0.5mg	Mouse IgG1 Isotype Control (MG1)
NB100-64392AF488	Neutrophil Elastase/ELA2 Antibody (ELA10-101.5 (39A)) [Alexa Fluor® 488]

Limitations

This product is for research use only and is not approved for use in humans or in clinical diagnosis. Primary Antibodies are guaranteed for 1 year from date of receipt.

For more information on our 100% guarantee, please visit www.novusbio.com/guarantee

Earn gift cards/discounts by submitting a review: www.novusbio.com/reviews/submit/NB100-64392

Earn gift cards/discounts by submitting a publication using this product:
www.novusbio.com/publications

